

# **DWZ series Updater**

Operating Manual for Windows7

# Contents

1. Summary .....	3
2. Preparing .....	3
3. Install procedure .....	3
3-1. Folder structure .....	3
3-2. Installation .....	4
3.2.1 Installing the Updater .....	4
3.2.2 Installing the USB Driver .....	6
4. Update procedure .....	11
5. Confirmation after updating .....	13

## 1. Summary

This manual is a procedure of firmware update of ZTX-B01、ZTX-M01、ZTX-B02RC、ZTX-M02RC、ZRX-C30、ZRX-HR50 and ZRX-HR70.

This manual is explained for procedure of ZRX-HR50, but other equipment is same procedure as ZRX-HR50.

## 2. Preparation

### < Software >

Obtain the Updater file depending on the unit to be updated.

### < Others >

Personal Computer

OS : Windows XP SP3, Windows Vista, Windows 7 or Windows 8

USB cable: Type A – Type Micro B (P/N 1-835-226-11 or 1-836-906-11)



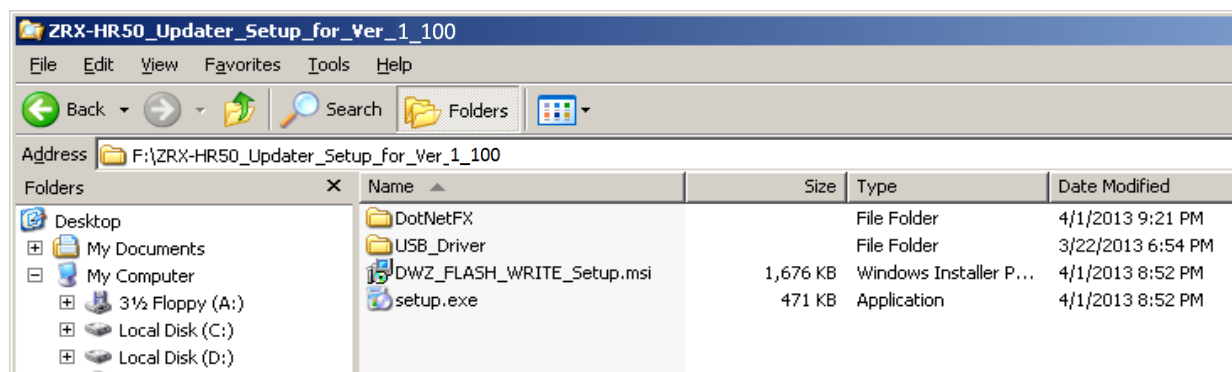
## 3. Install procedure

Install Updater and USB driver to PC.

This item explains about ZRX-HR50, but other equipment is same procedure as ZRX-HR50.

### <3.1 Folder Structure>

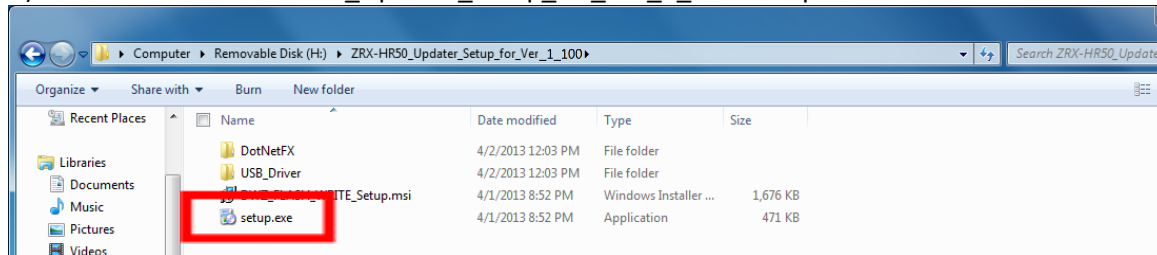
The folder structure is shown below.



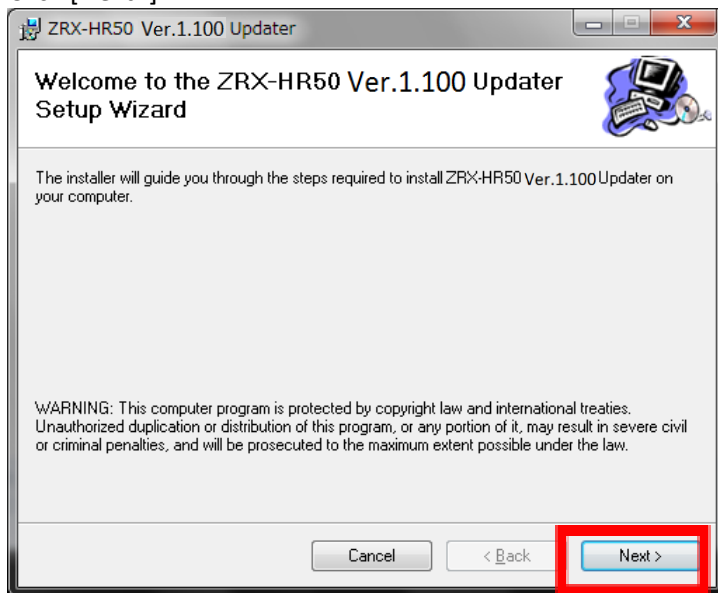
## <3.2 Installation>

### 3.2.1 Installing the Updater

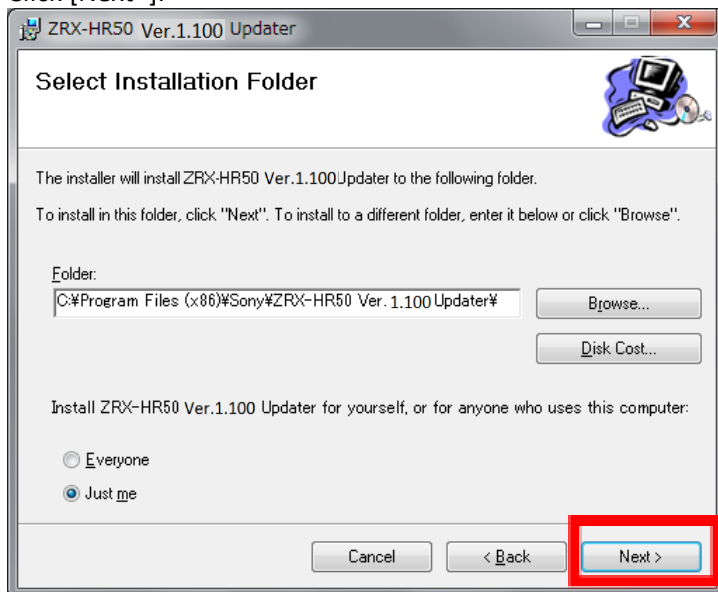
A) Double click ¥ZRX-HR50\_Updater\_Setup\_for\_Ver\_1\_100¥setup.exe.



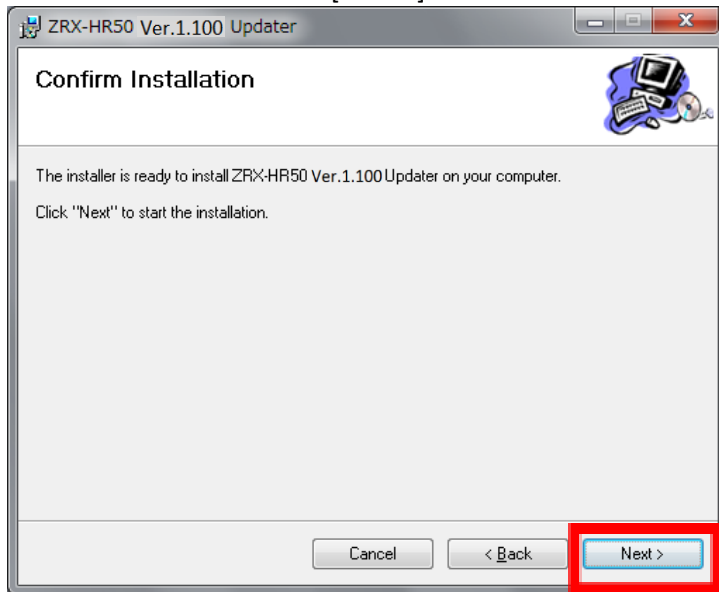
A) Click [Next>].



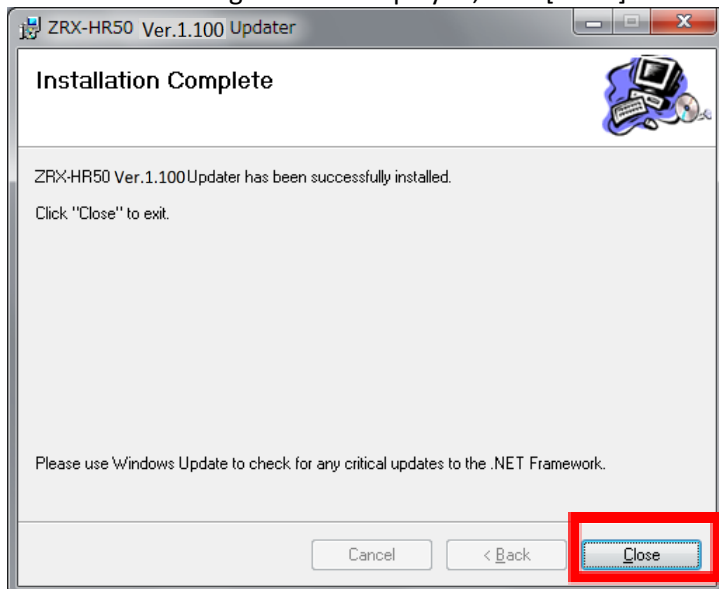
B) Click [Next>].



C) Installation will start when [Next >] is clicked.



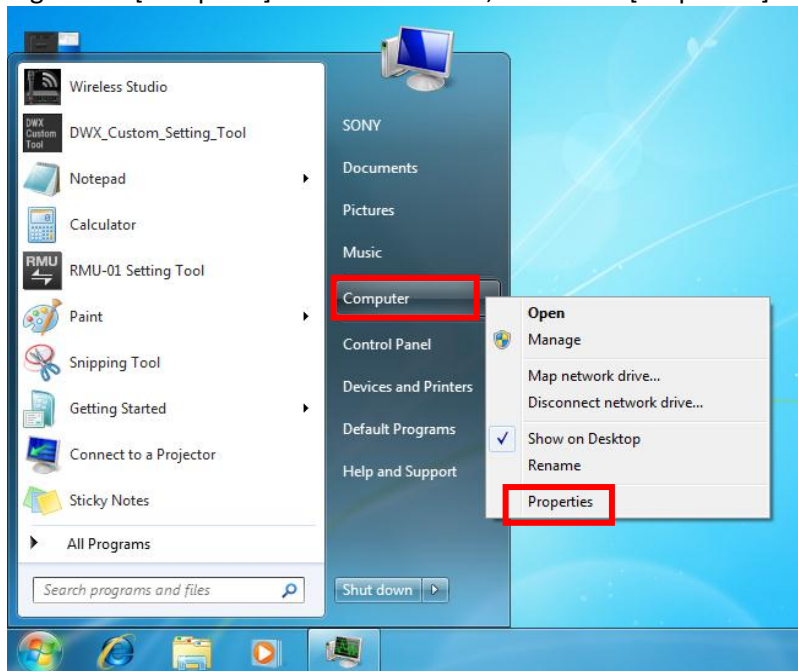
D) When the following screen is displayed, click [Close]. This completes the setup of the Updater.



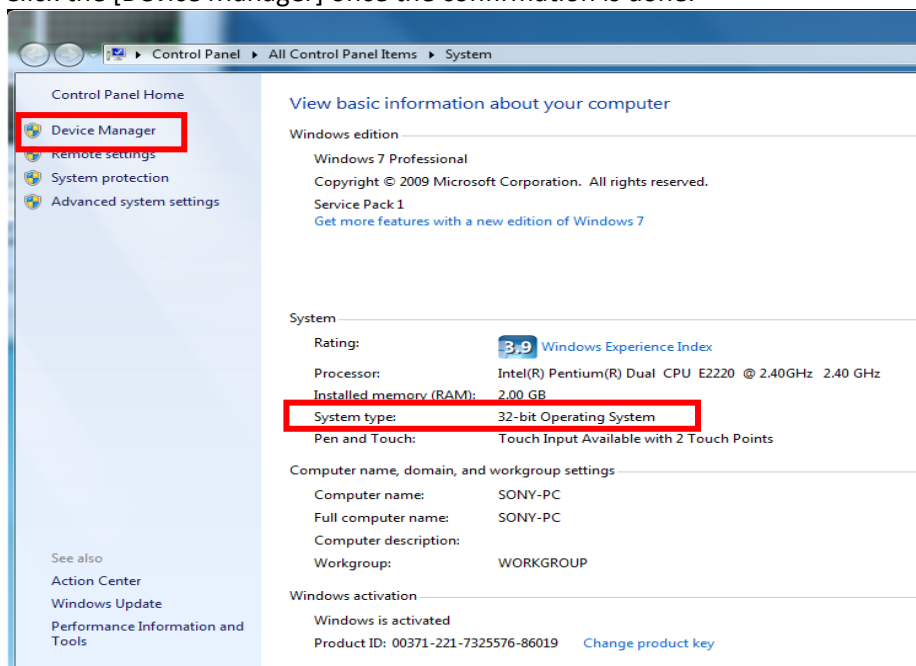
### 3.2.2 Installing the USB Driver

Installation of the USB driver is required when connecting the unit for the first time. It is not required anymore if it is installed once.

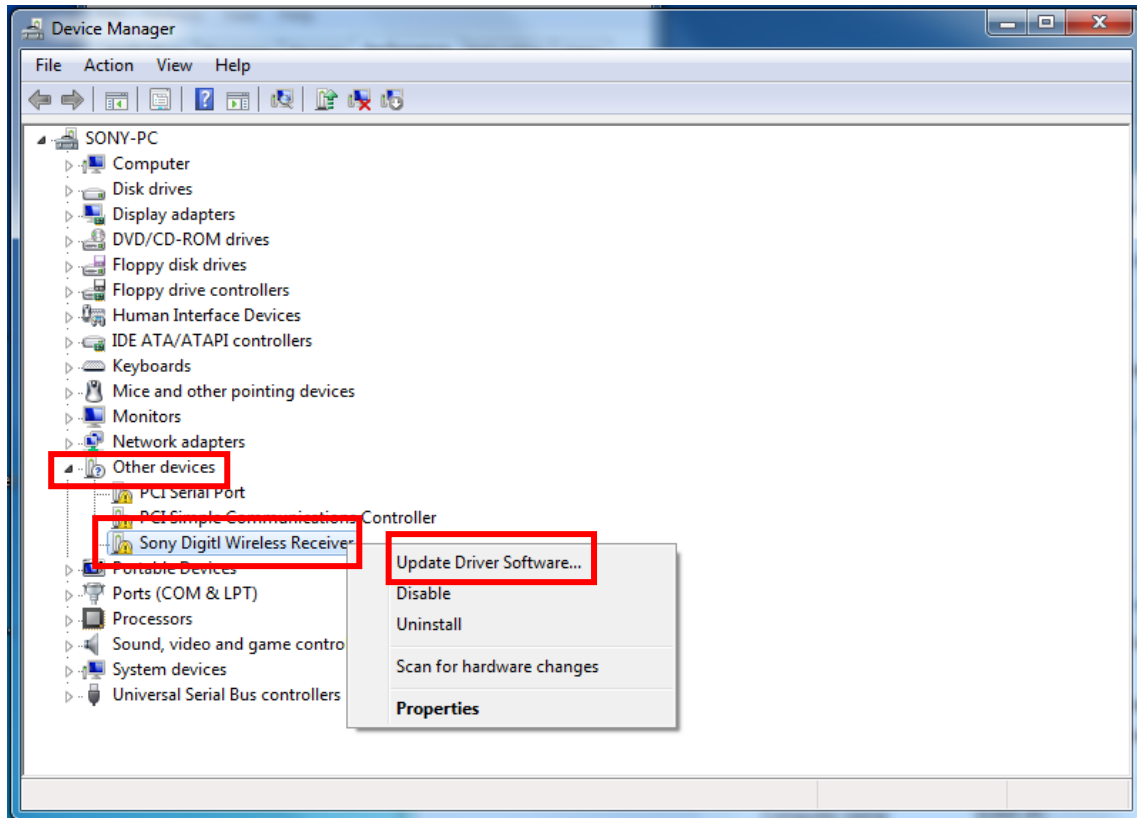
- A) Turn on the power of ZRX-HR50.
- B) Connect the PC with the ZRX-HR50 using a USB cable.  
At this time, indicators and displays of ZRX-HR50 except the power supply LED will turn off, but this is not a malfunction.
- C) Confirm if the System type of the OS is 32-bit or 64-bit.  
Right click [Computer] in the Start menu, and select [Properties].



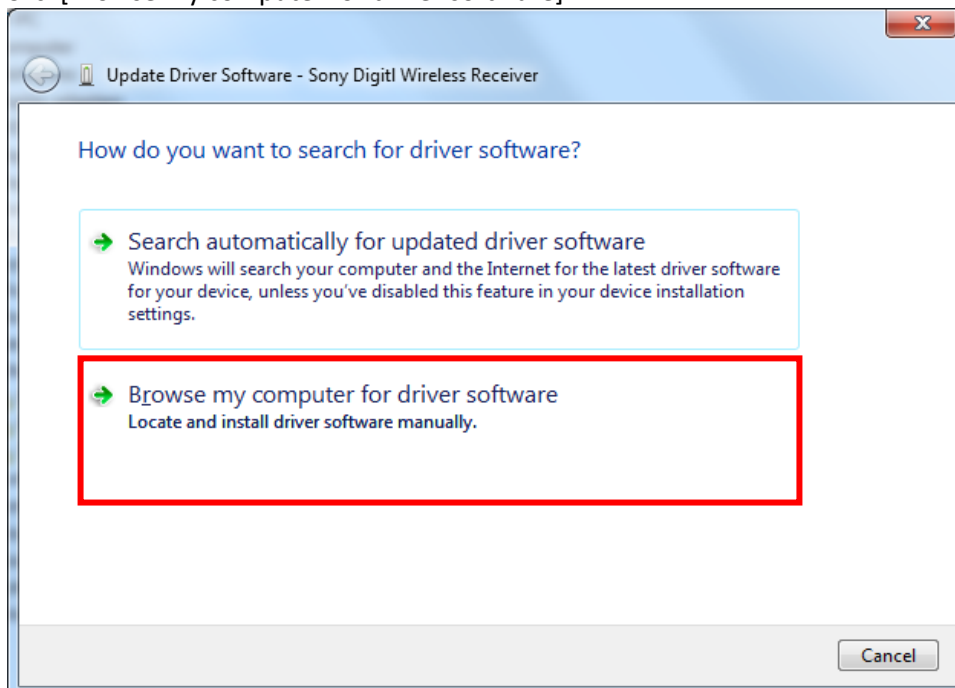
- D) Check the “System type” to confirm if it is 32-bit or 64-bit. Following screen is indicating an OS of 32-bit. Click the [Device Manager] once the confirmation is done.



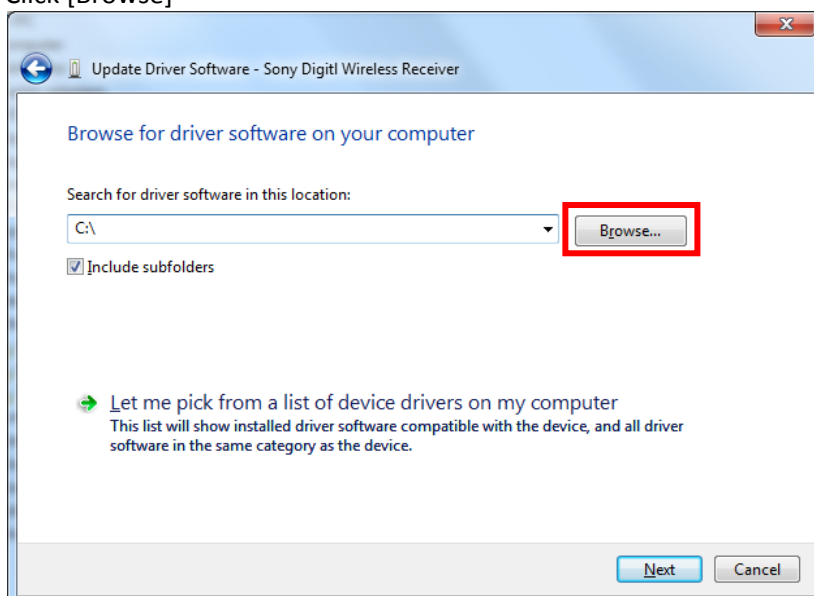
- E) Right click [Sony Digital Wireless Receiver] in [Other Devices], and select [Update Driver Software...] from the context menu.



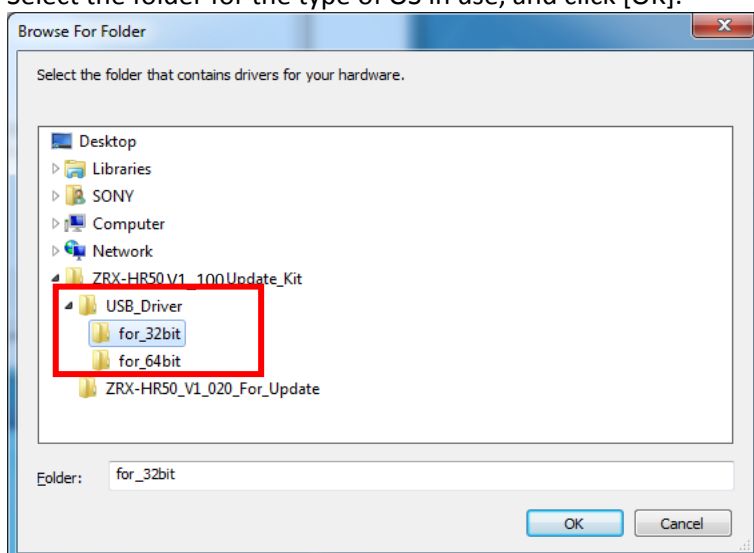
- F) Click [Browse my computer for driver software]



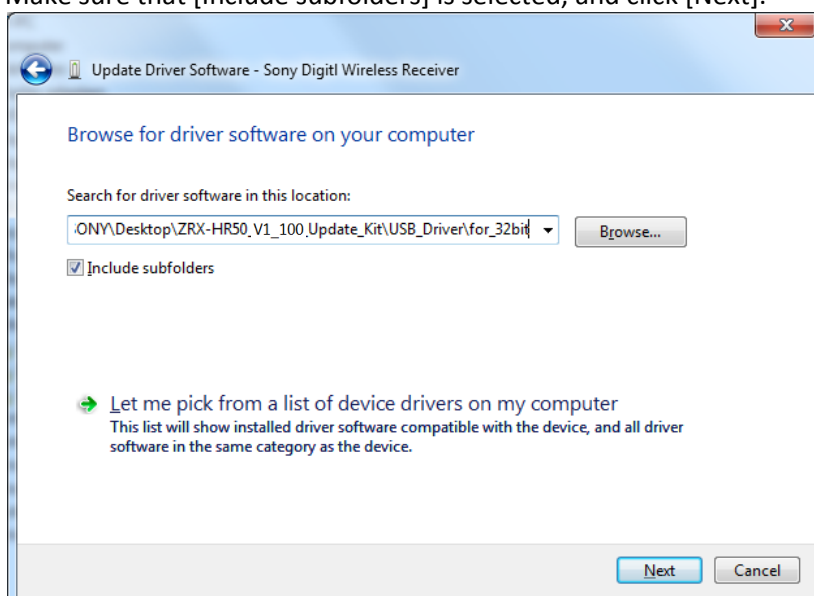
G) Click [Browse]



H) There are for\_32Bit folder and for\_64Bit folder in the USB\_Driver folder of the obtained file. Select the folder for the type of OS in use, and click [OK].

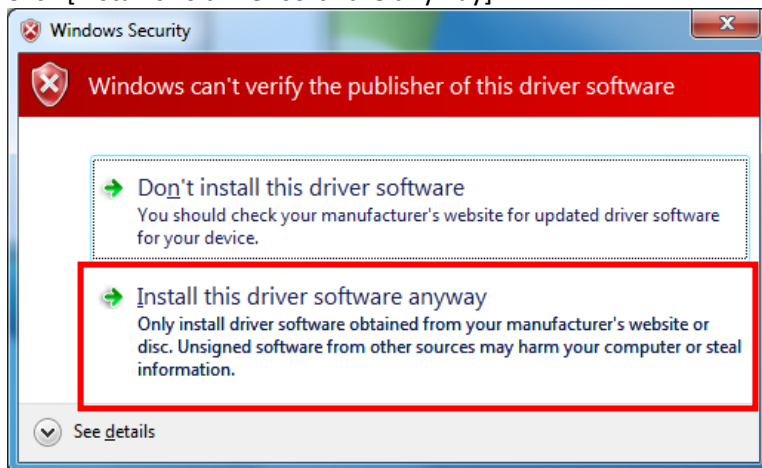


I) Make sure that [Include subfolders] is selected, and click [Next].

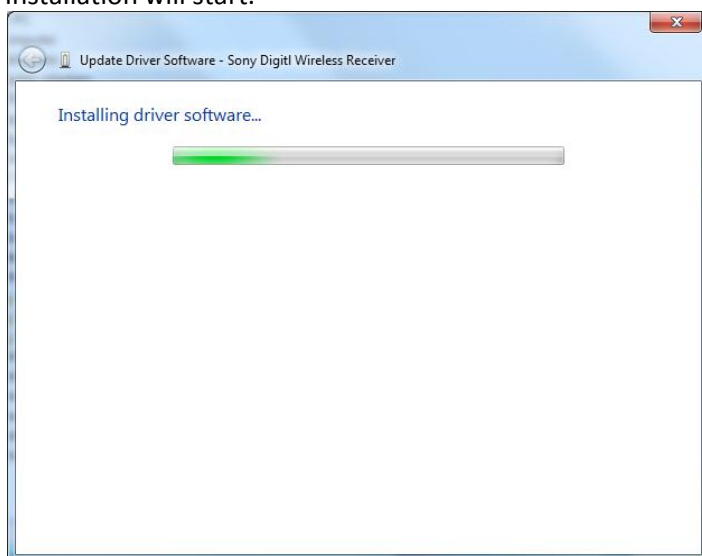




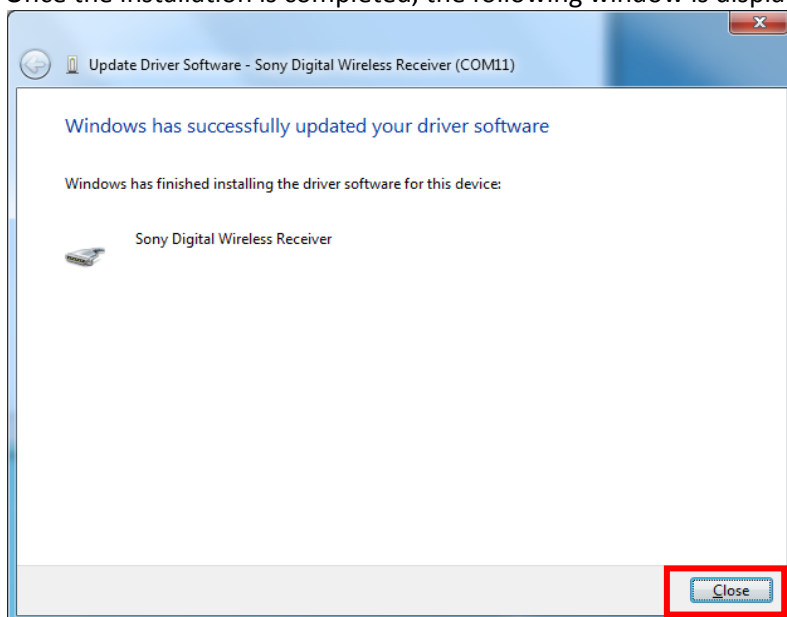
J) Click [Install this driver software anyway].



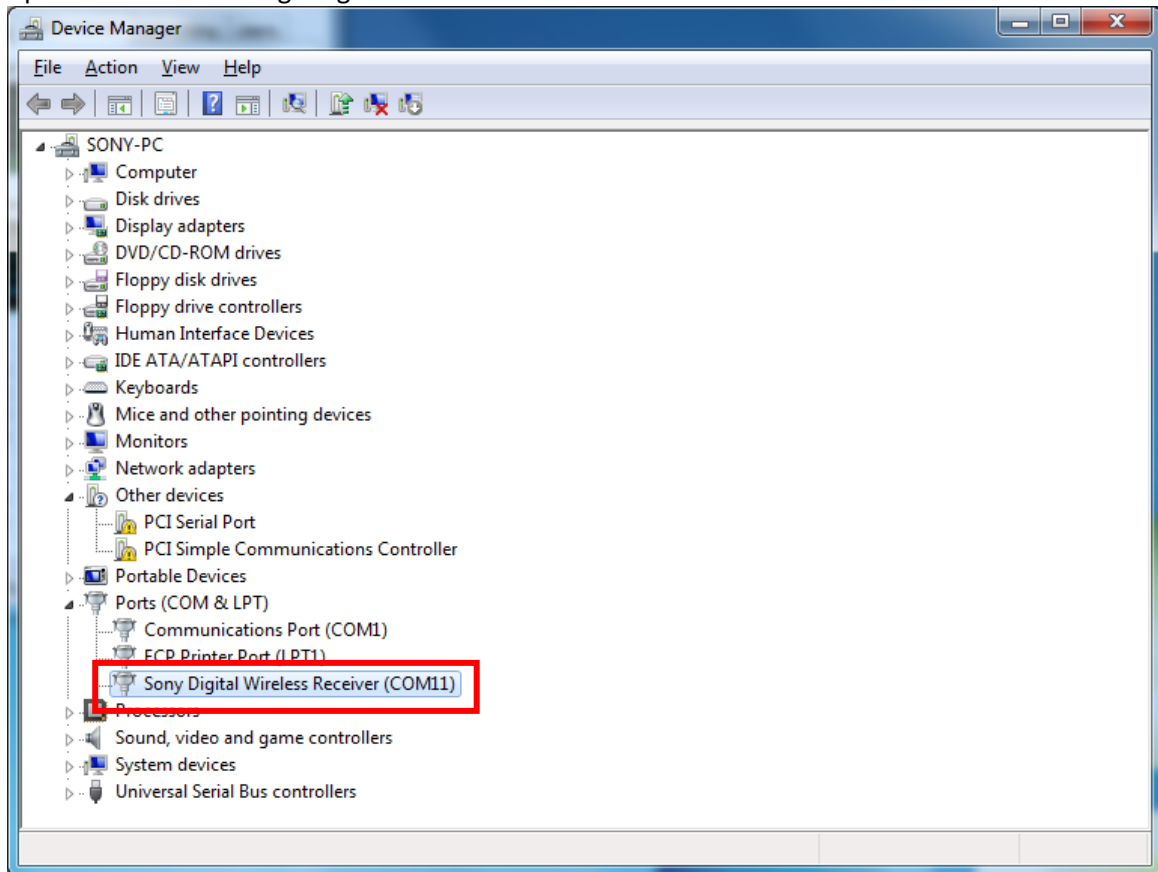
K) Installation will start.



L) Once the installation is completed, the following window is displayed, so click [Close].



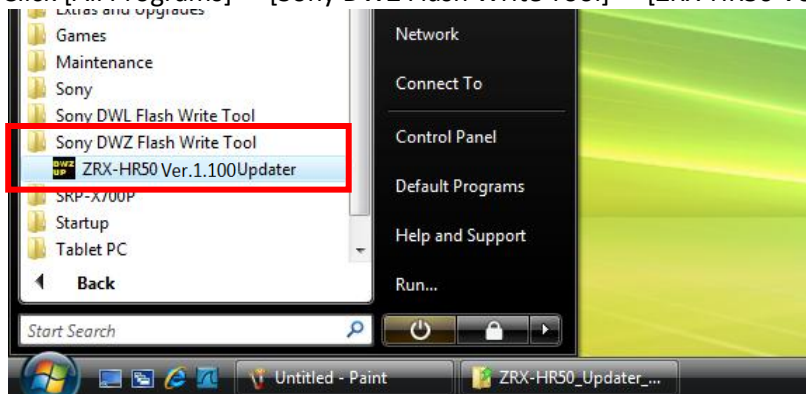
M) Open the Device Manager again to confirm that the USB driver is installed.



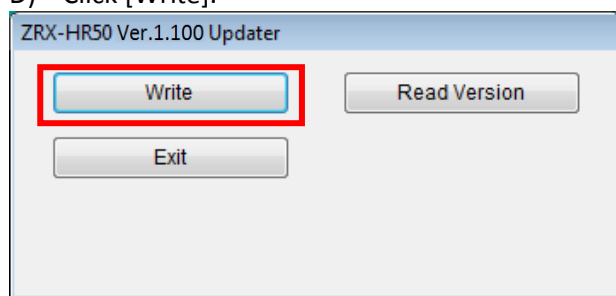
#### 4. Update procedure

This item explains about ZRX-HR50, but other equipment is same procedure as ZRX-HR50.

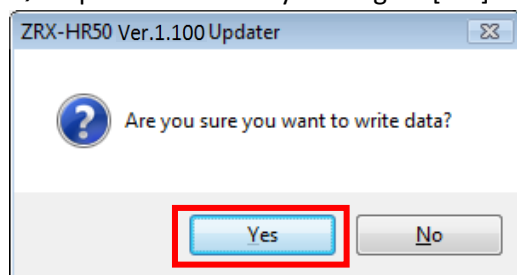
- A) Turn on the power of ZRX-HR50.
- B) Connect the PC with the ZRX-HR50 using a USB cable.  
Meantime, all of indicators and displays of ZRX-HR50 are turning light off, but this is not a malfunction.
- C) Click [All Programs] -> [Sony DWZ Flash Write Tool] -> [ZRX-HR50 Ver. 1.100 Updater] in the Start menu.



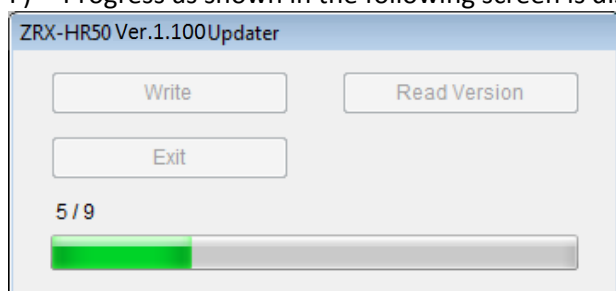
- D) Click [Write].



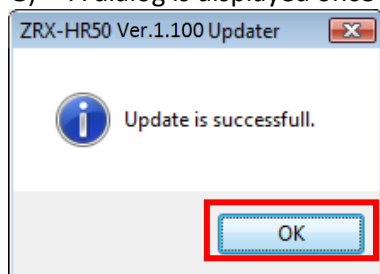
- E) Update will start by clicking on [Yes].



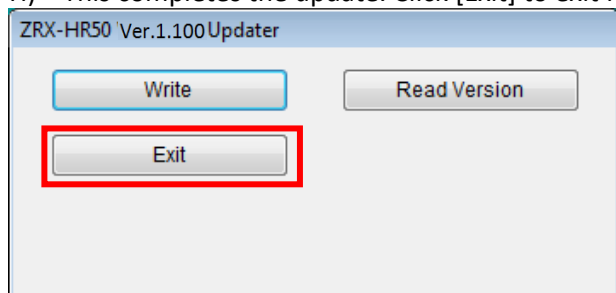
- F) Progress as shown in the following screen is displayed during the update.



G) A dialog is displayed once the update is completed, so click [OK].



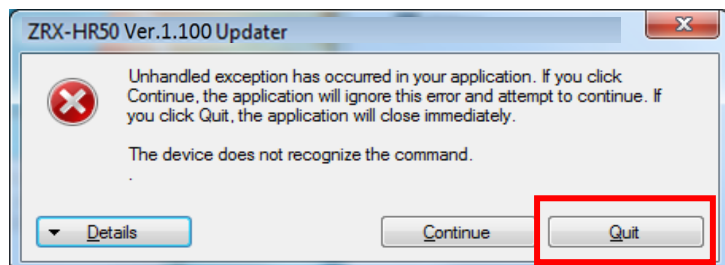
H) This completes the update. Click [Exit] to exit from the Updater.



I) Disconnect the USB cable from the ZRX-HR50, and turn off the power of the set.

\* When the update fails

Following screen is displayed when the update fails. In such cases, click [Quit], and then restart the Updater to execute the update.

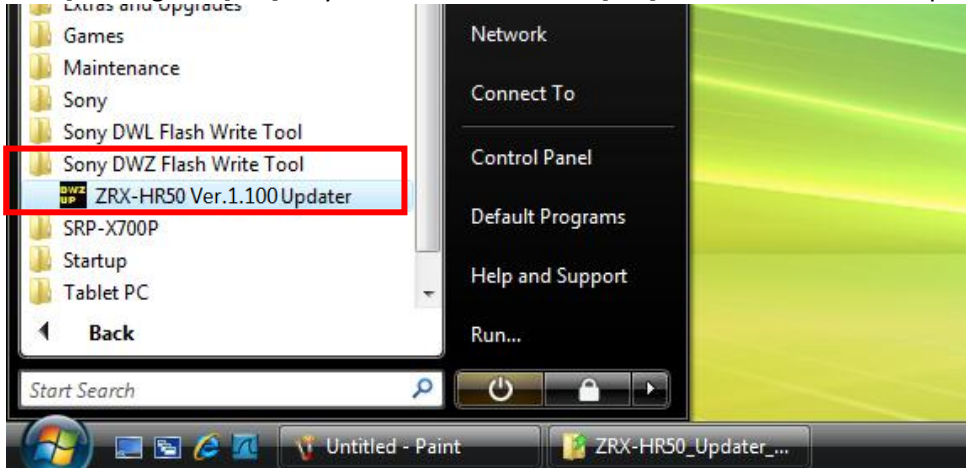


## 5. Confirmation after updating

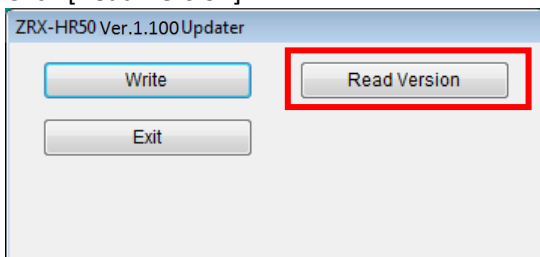
This item explains about ZRX-HR50, but other equipment is same procedure as ZRX-HR50.

- A) Turn on the power of ZRX-HR50.
- B) Connect the PC with the ZRX-HR50 using a USB cable.  
At this time, indicators and displays of ZRX-HR50 except the power supply LED will turn off, but this is not a malfunction.

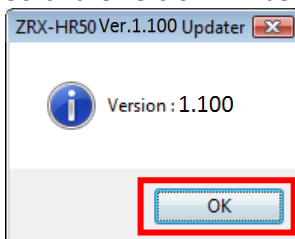
- C) Click [All Programs] -> [Sony DWZ Flash Write Tool] -> [ZRX-HR50 Ver. 1.100 Updater] in the Start menu.



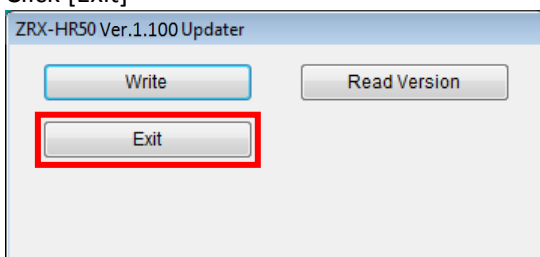
- D) Click [Read Version]



- E) Software version will be appeared. After you confirm the software version, click [OK].



- F) Click [Exit]



- G) Pull off the USB cable from ZRX-HR50, and turn off the power of ZRX-HR50.