

Custom Setting Function manual

Contents

1.	Features.....	4
2.	Preparation of Software and Devices	5
2.1	Device Updating Procedures	5
2.2	PC Settings.....	5
2.3	Software Installation	6
3.	Basic Usage	9
3.1	Introduction.....	9
3.2	About Custom Settings.....	9
3.3	How To Create Custom Settings	10
3.4	Applying Custom Settings to Transmitters and Receivers.....	14
3.5	Applying Custom Settings to Wireless Studio.....	17
3.6	Deleting Custom Settings in Transmitters and Receivers.....	19
3.7	Deleting Custom Settings in Wireless Studio.....	22
3.8	Confirming Custom Settings in Transmitters and Receivers.....	23
3.9	Confirming Custom Settings in Wireless Studio	25
4.	Using Each Application.....	29
4.1	Using the DWX Custom Setting Tool.....	29
4.1.1	<i>Setting Items and Functions</i>	<i>29</i>
4.2	Using Wireless Studio.....	35
4.2.1	<i>Setting Items and Functions</i>	<i>35</i>
5.	Various Operations.....	39
5.1	Applying Wireless Studio Custom Settings to Transmitters and Receivers.....	39
5.2	Using Wireless Studio to apply Custom Settings from dwl2 and cpa Files to Transmitter and Receivers	42
5.3	Using Wireless Studio to apply Custom Settings from Transmitters and Receivers to Other Transmitters and Receivers.....	47
5.4	Using Channel Plan Advisor with Custom Groups.....	51
6.	Troubleshooting	53

6.1	Problems with DWX Custom Setting Tool	53
6.2	Problems with Wireless Studio	55
6.3	Other Problems	56
7.	Appendix	58
7.1	Using with Windows 8.....	58
7.1.1	Installing .net Framework 2.0.....	58
7.1.2	Installing USB Drivers.....	64
7.2	Version information.....	72

1. Features

The DWX Custom Setting Tool provides the following capabilities.

Register groups of frequently used frequencies

Individual channel groups (Custom groups) can be created by registering only frequencies the customer wants to use. This can make previously complex frequency settings easy.

You can register up to 12 groups of up to 24 channels each. However, the DWR-S02D (J34B) supports at most eight 24-channel groups.

Limit frequency band usage

If the wireless microphone frequency band overlaps a TV broadcast band, interference with the TV broadcast band can be avoided by limiting band usage.

Frequency band usage limits can be set for every TV broadcast band. Also, an advanced setting enables guard bands to prevent interference to adjacent TV bands. Guard band width can be set up to 1 MHz in 125-kHz steps.

2. Preparation of Software and Devices

2.1 Device Updating Procedures

To use the custom setting functions, upgrade to the latest transmitter, receiver and Wireless Studio versions.

If you update a transmitter or a receiver

Please confirm the updater manuals for each of model.

If you update Wireless Studio

If old version has been installed for your PC, please uninstall Wireless Studio (old version). And please re-install Wireless Studio (Version 3.03 and more).

The table of software version that is supported for the custom setting.

The function of custom setting is supported for the following software version.

Model Name	Software Version
DWT-B01	1.31 and more (for 1.XX unit*)
	2.22 and more (for 2.XX unit*)
DWT-P01	1.31 and more (for 1.XX unit*)
	2.22 and more (for 2.XX unit*)
DWM-01	1.23 and more
DWM-02	1.03 and more
DWR-S01D	1.13 and more
DWR-S02D	1.01 and more
DWR-R01D	1.23 and more
DWR-R02D	1.03 and more
Wireless Studio	3.03 and more
RMU-01	1.21 and more
RMU-01 Setting Tool	1.10 and more

*Depending on hardware differences in the DWT-B01 and DWT-P01, the version number will vary. For details, refer to the operating instructions for the DWT-B01/DWT-P01 updater.

2.2 PC Settings

Install USB driver for your PC

If you use the DWT-B01, DWT-P01, DWM-01, DWM-02, DWR-S01D, DWR-S02D

Please confirm the updater manuals for each of model.

If you use Windows 8 PC, please confirm 7.1.2 Installing USB Drivers.

The network setting

If you use the DWR-R01D, DWR-R02D, Wireless Studio

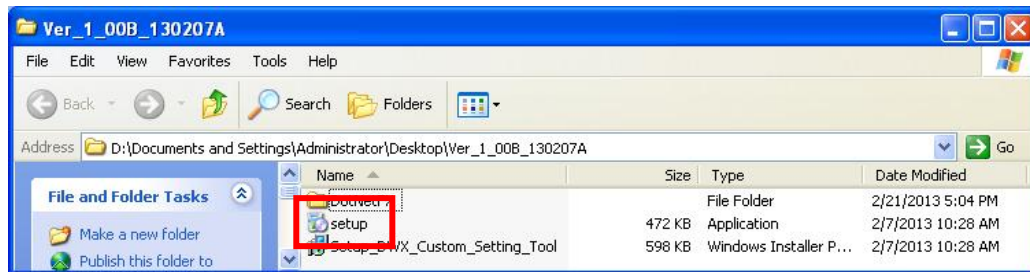
Please confirm the manual for Wireless Studio.

2.3 Software Installation

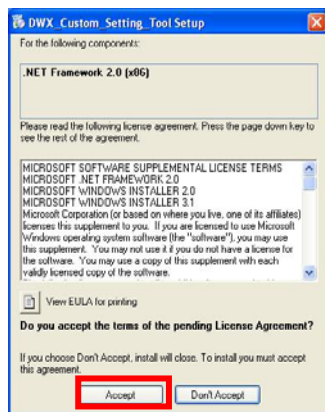
Installation procedure for DWX Custom Setting Tool

Installation procedure

1. Double-click "setup.exe"

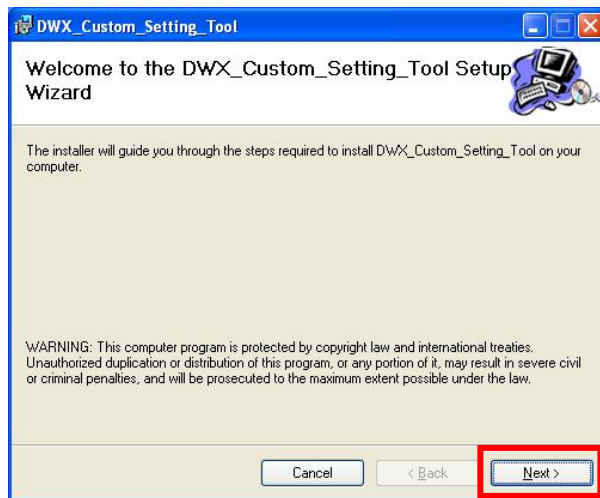


2. After double-clicking, perform installation using the following procedure.
 - If the following screen appears, click [Accept] and confirm the installation procedure in 3.

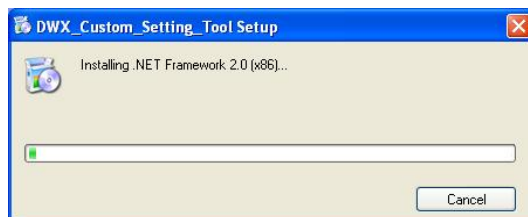


- If the following screen appears, click [Next>] and confirm the installation

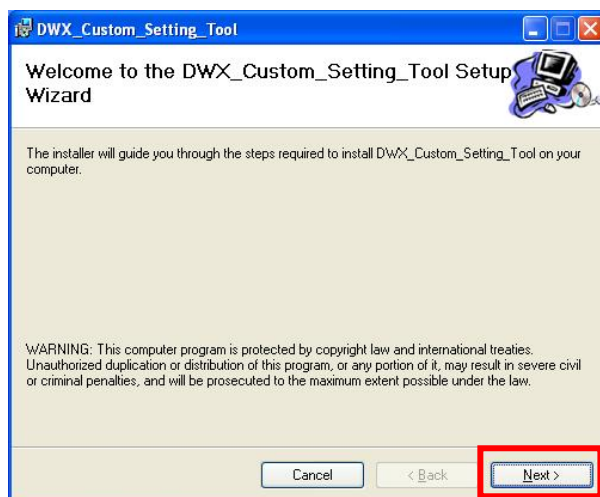
procedure in 5.



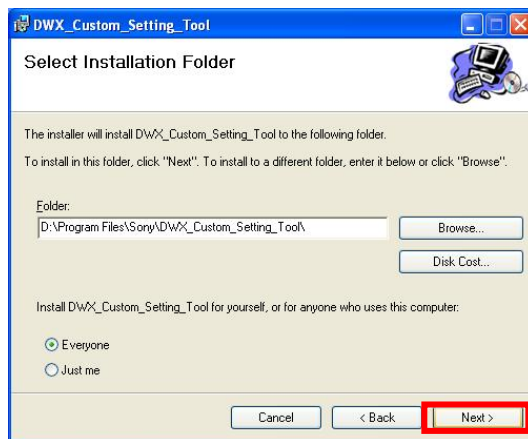
3. Installation of .net Framework version 2.0 will be in progress.



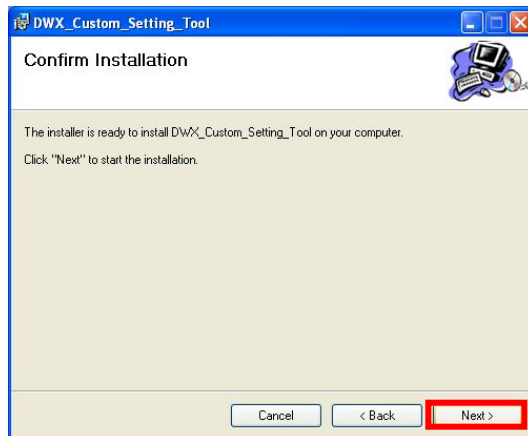
4. When installation of .net Frameworks version 2.0 is complete, the following screen appears. Click [Next>].



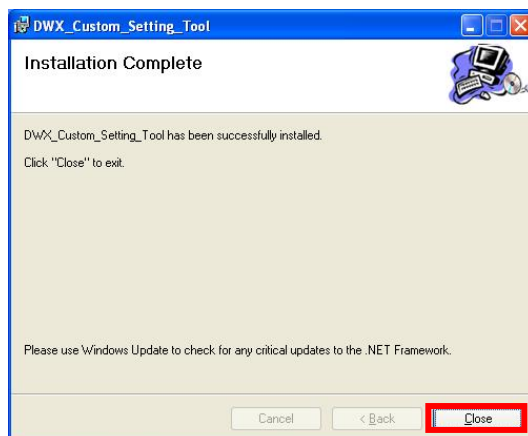
5. Click [Next].



6. Click [Next].



7. Click [Close]. This completes setup of DWX Custom Setting Tool.



3. Basic Usage

3.1 Introduction

For proper operation of the custom setting functions, the same custom settings must be applied to transmitters, receivers and Wireless Studio.

3.2 About Custom Settings

Concept

Transmitter and receiver customization can be achieved by loading a custom settings file ("src" file) on each device.

Src files can be created and loaded using the DWX Custom Setting Tool.

When using Wireless Studio, apply the same custom settings as used by the transmitters and receivers. Wireless Studio includes a function to apply custom settings to itself. This requires a src file created with the DWX Custom Setting Tool.

Setting Contents

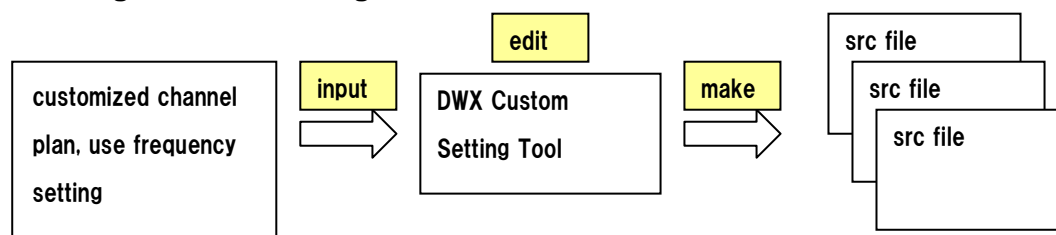
The customizable setting items are as follows.

- Control the use of units of TV frequency bands.
- Create freely settable frequency groups.
- Control display of only custom groups, or both custom and preset groups.
- Assign names to custom settings.

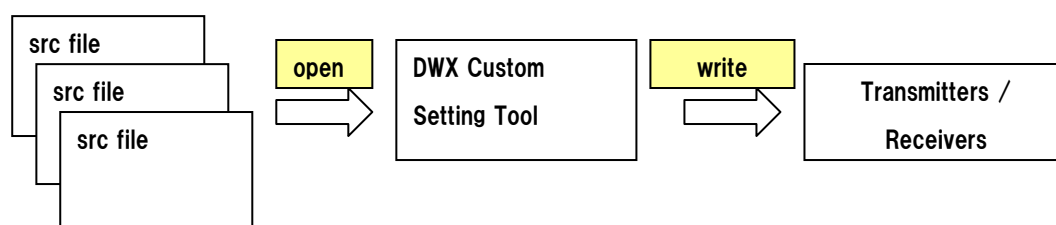
Please refer to the setting procedures described in 4.1 Using the DWX Custom Setting Tool

The following figures summarize the procedures

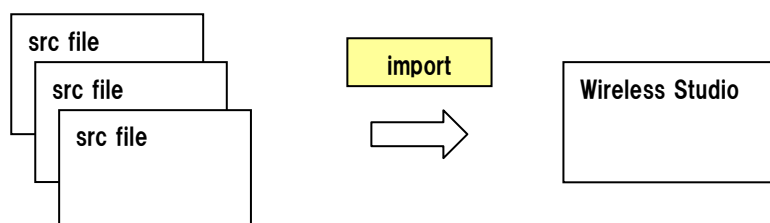
Creating a custom settings file



Applying custom settings to a transmitter and receiver



Applying custom settings to Wireless Studio

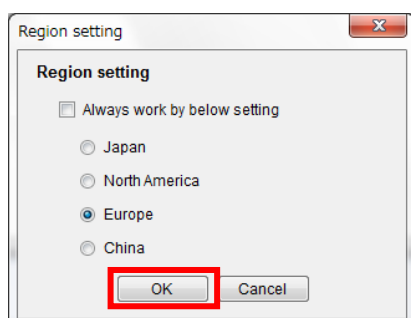


3.3 How To Create Custom Settings

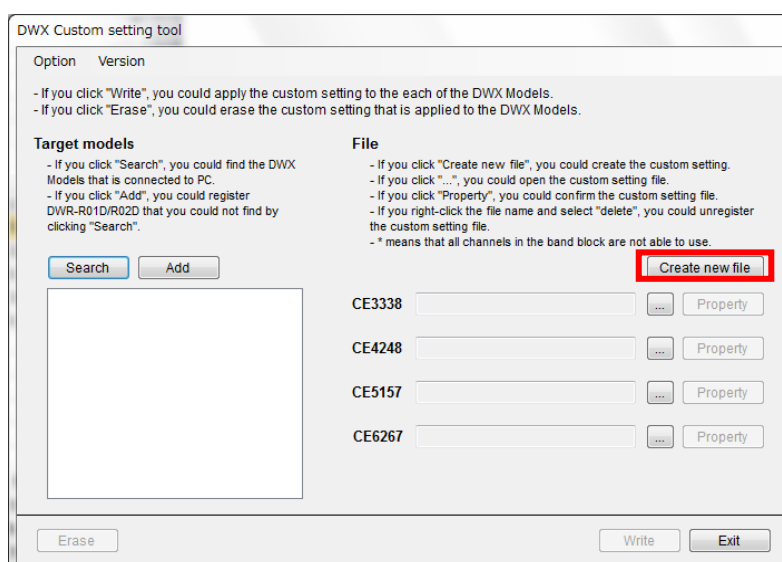
Procedure

- 1 Select Start menu -> All Programs -> Sony DWL Flash Write Tool -> DWX Custom Setting Tool to start the DWX Custom Setting Tool.

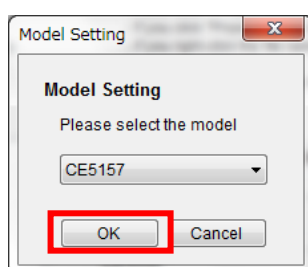
- 2 Select the region for use, and click [OK]. (Select [Always work by below setting] to retain the same selection for the next time.)



- 3 Click the [Create new file] button .

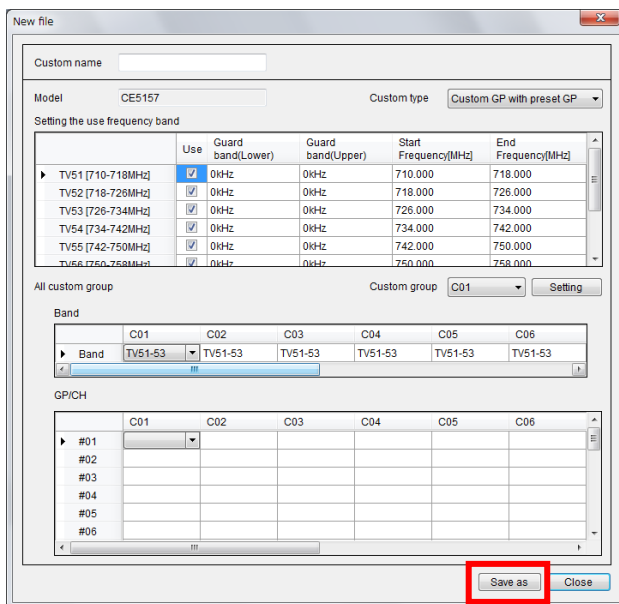


- 4 Select the settings file to apply, and click [Open].



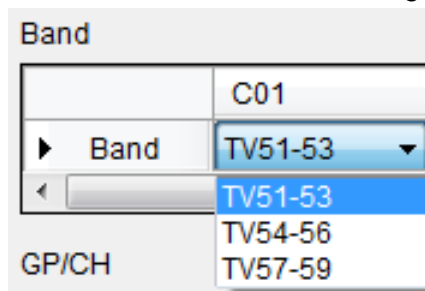
- 5 Customize the settings, and click [Save as]. For setting creation details, see 4.1.1 Setting Items and Functions, “ii) Cusotm Setting Window” and “iii) Custom Group

Settings Window”.

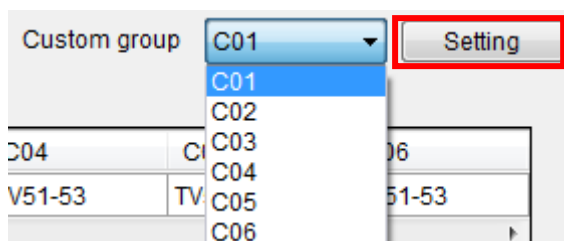


a When creating an original channel group, perform the following.

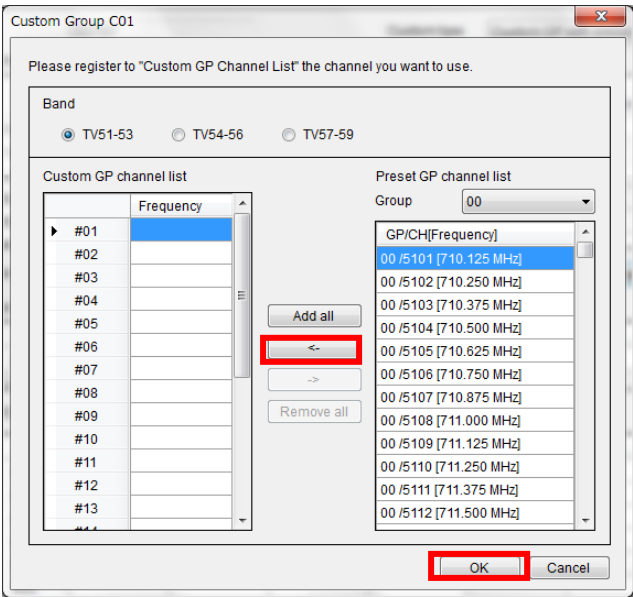
i Determine the bands for each group.



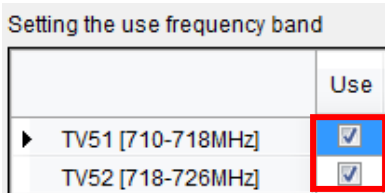
ii Select a group number for the [Custom group], and press the [Setting] button.



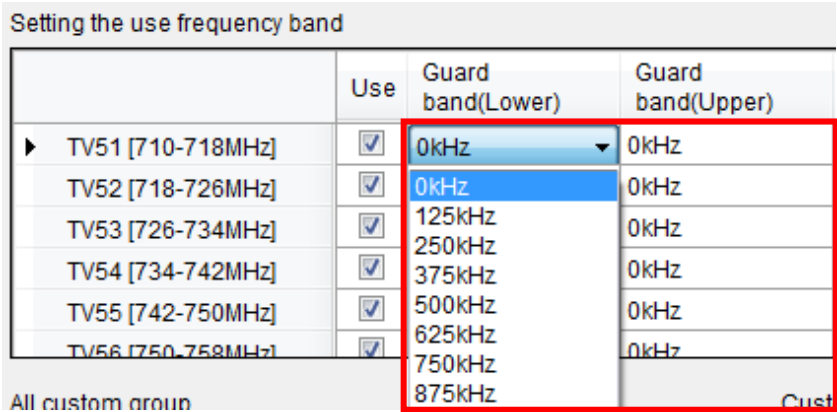
- iii Select the frequency to be used from the [Preset GP channel list], register with the [->] (arrow) button, and click [OK].



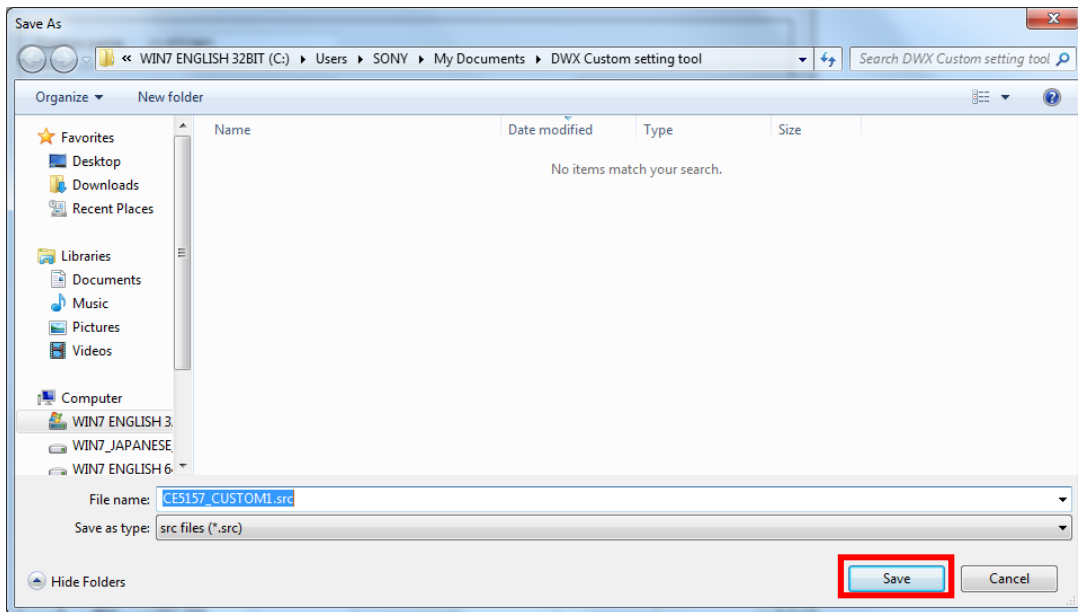
- b To limit the frequency bands used, perform the following procedure.
 - i Select [Use] for each TV broadcast band you want to use.



- ii Set the guard bands for each TV broadcast band selected.



- 6 Enter a file name, and click [Save]. This completes custom settings creation. Also see 3.4 Applying Custom Settings to Transmitters and Receivers, and 3.5 Applying Custom Settings to Wireless Studio.



3.4 Applying Custom Settings to Transmitters and Receivers

Preparation

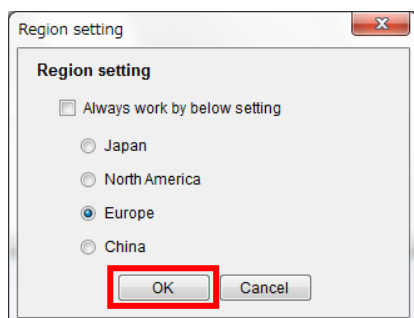
Connect to the transmitter(s) and receiver(s) beforehand with USB or Ethernet cables.

If you connect the USB cable PC and Transmitter or Receiver, we recommend that you do not use USB-Hub. By using USB-Hub, DWX Custom setting Tool might fail write custom settings, erasing custom settings, and reading custom settings. If you fail, please confirm 6.1 Problems with DWX Custom Setting Tool.

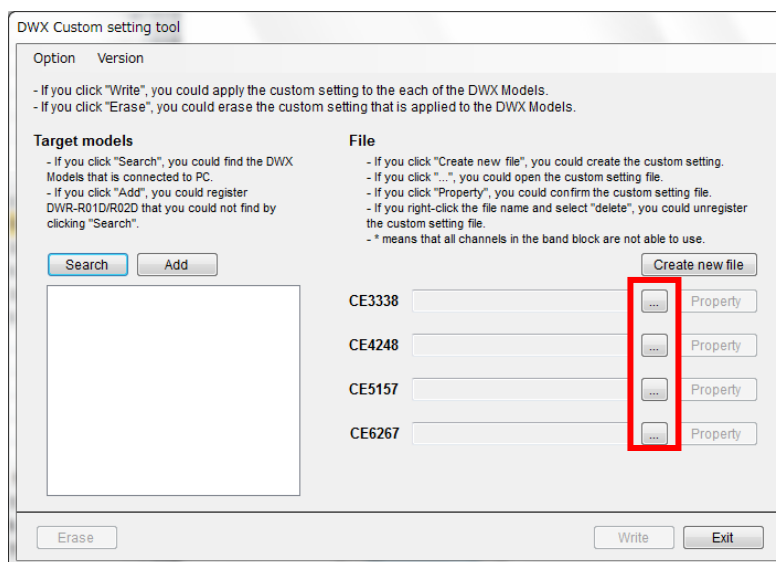
Application Procedure

1. Select Start menu -> All Programs -> Sony DWL Flash Write Tool -> DWX Custom Setting Tool to start the DWX Custom Setting Tool.

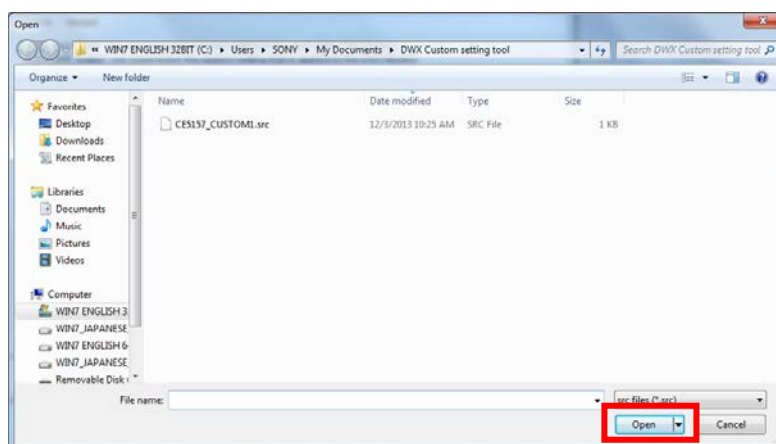
2. Select the region for use, and click [OK]. (Select [Always work by below setting] to retain the same selection for the next time.)



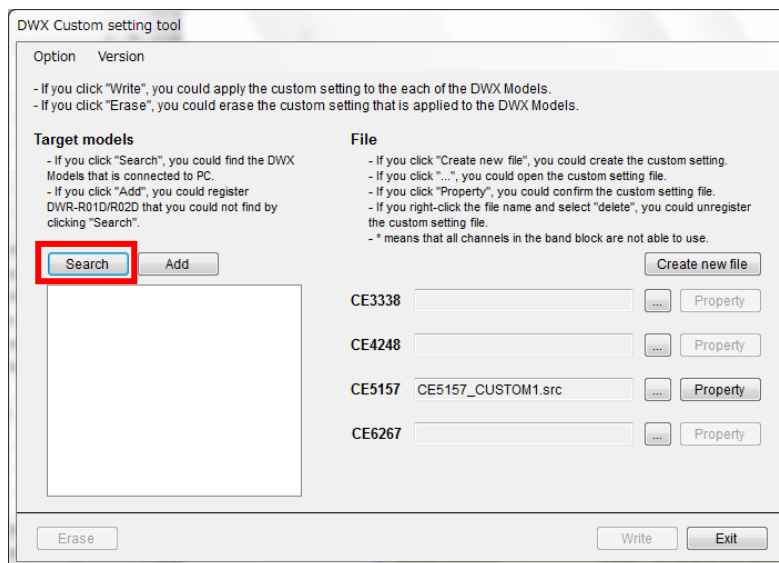
3. Click [...].



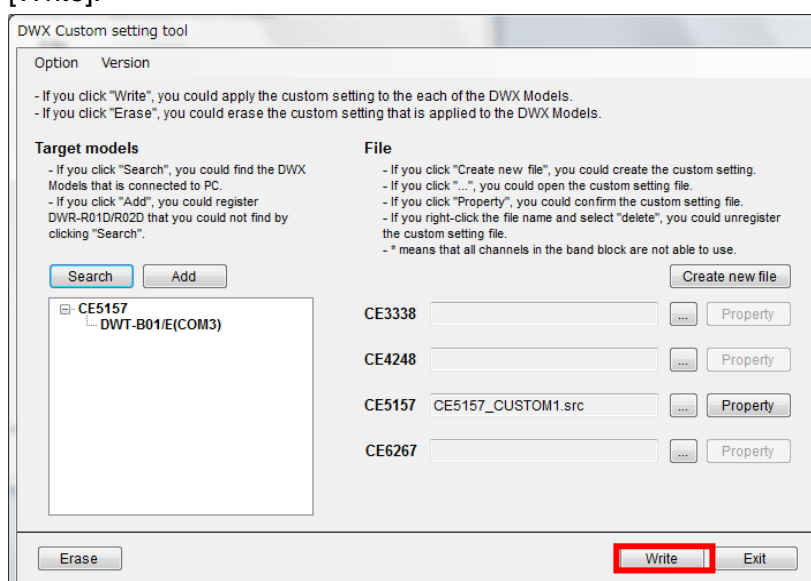
4. Select the settings file to apply, and click [Open].



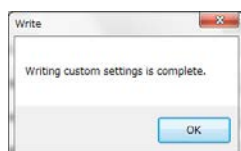
5. Click [Search].



6. When the transmitters and receivers connected to the PC are listed, click [Write].



7. When "Writing custom settings is complete" appears, the custom settings have been applied.



The confirmation procedure of custom setting

If you use the DWT-B01, DWT-P01, DWM-01, DWM-02, DWR-S01D, DWR-S02D

1. Turn on the model.
2. Press the minus button to display the VERSION menu.
3. Confirm that the Custom Name is displayed on the right side of the version.

If you use the DWR-R01D, DWR-R02D

1. Turn on the models.
2. Press the UTILITY button.
3. Turn the Jog dial to display the VERSION menu.
4. Confirm that the Custom Name is displayed on the right side of the version.

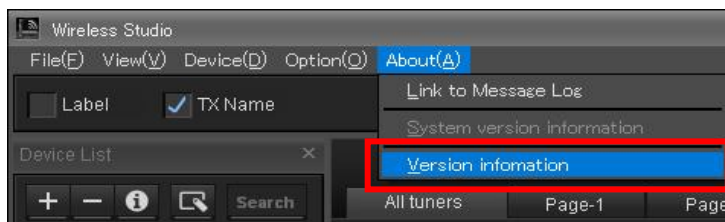
3.5 Applying Custom Settings to Wireless Studio

Preparations

You will make a custom setting files by using DWX Custom Setting Tool.

Procedure

1. Start Wireless Studio.
2. Select [About(A)] -> [Version information].

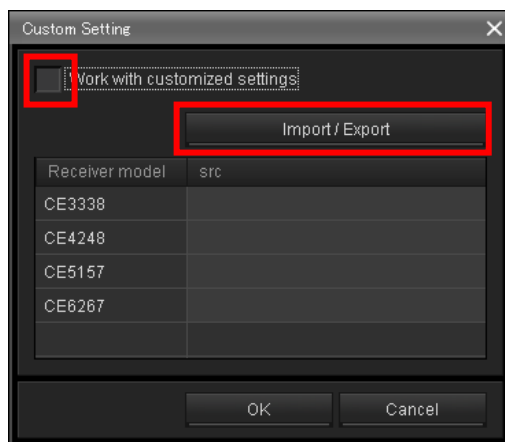


3. Click the [OK] while holding down Shift-key.

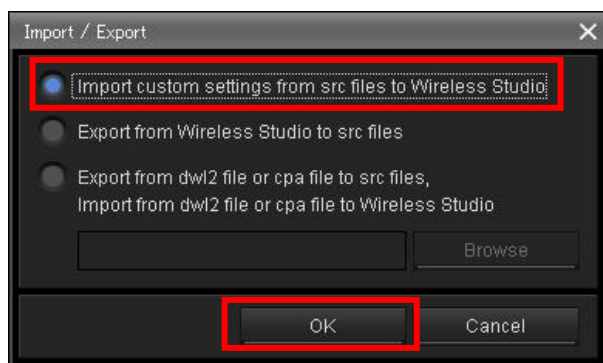


Click the [OK] while holding down Shift-key.

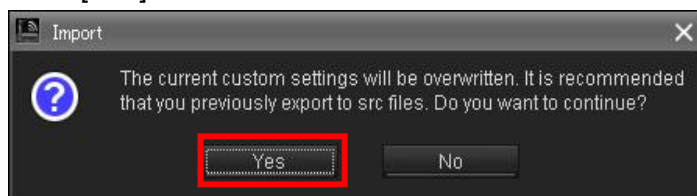
4. Check [Work with customized settings], and click [Import/Export].



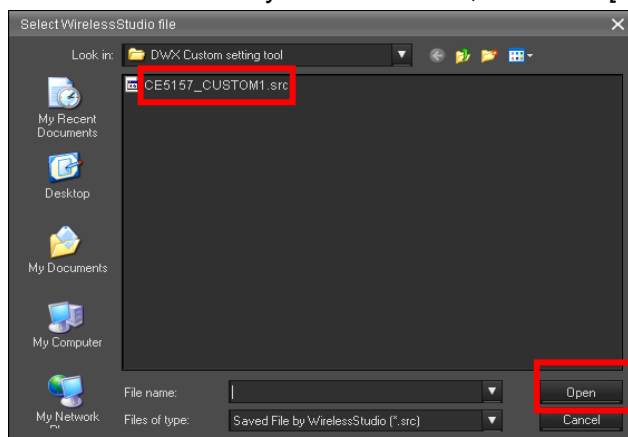
5. Select [Import custom settings from src files to Wireless Studio], and click [OK].



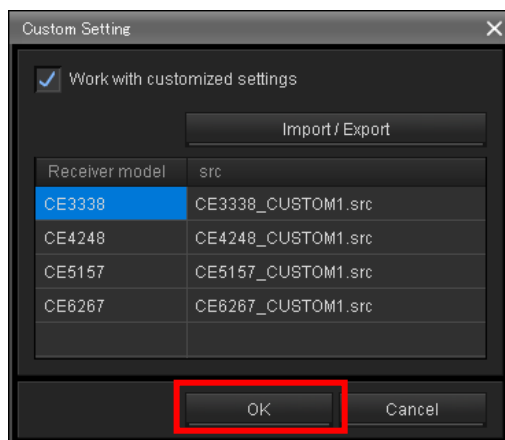
6. Click [Yes].



7. Select the files that you want to use, and click [Open].



8. If the process of importing the custom settings is complete, click [OK].



9. If click [Yes], Wireless Studio restarts. This completes the process of importing the custom settings for Wireless Studio.



3.6 Deleting Custom Settings in Transmitters and Receivers

Preparations

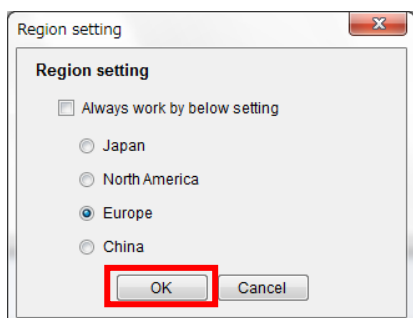
Connect to the transmitter(s) and receiver(s) beforehand with USB or Ethernet cables.

If you connect the USB cable PC and Transmitter or Receiver, we recommend that you do not use USB-Hub. By using USB-Hub, DWX Custom setting Tool might fail write custom settings, erasing custom settings, and reading custom settings. If you fail, please confirm 6.1 Problems with DWX Custom Setting Tool.

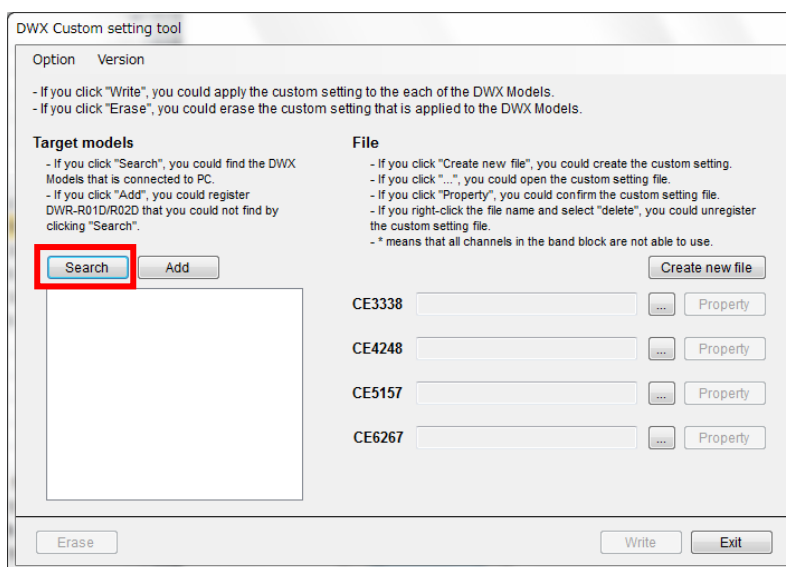
The erasing procedure

1. Select Start menu -> All Programs -> Sony DWL Flash Write Tool -> DWX Custom Setting Tool to start the DWX Custom Setting Tool.

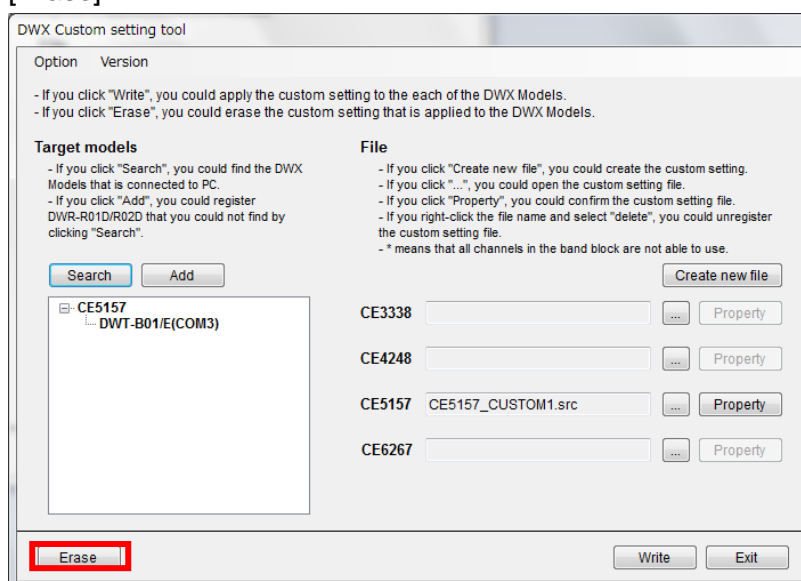
2. Select the region for use, and click [OK]. (Select [Always work by below setting] to retain the same selection for the next time.)



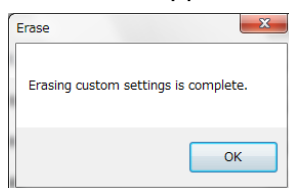
3. Click [Search].



- When the transmitters and receivers connected to the PC are listed, click [Erase].



- When “Erasing custom settings is complete” appears, the custom settings have been applied.



The confirmation procedure of erasing a custom setting

This procedure verifies that custom settings have been erased.

If you use the DWT-B01, DWT-P01, DWM-01, DWM-02, DWR-S01D, DWR-S02D

- Turn on the model.
- Press the minus button to display the VERSION menu.
- Confirm that Custom Name is not displayed on the right side of the version.

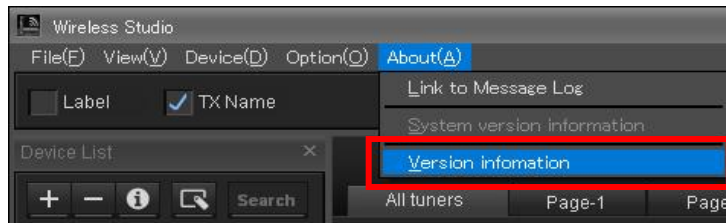
If you use the DWR-R01D, DWR-R02D

- Turn on the model.
- Press the UTILITY button.
- Turn the Jog dial to display the VERSION menu.
- Confirm that the Custom Name is not displayed on the right side of the version.

3.7 Deleting Custom Settings in Wireless Studio

The erasing procedure

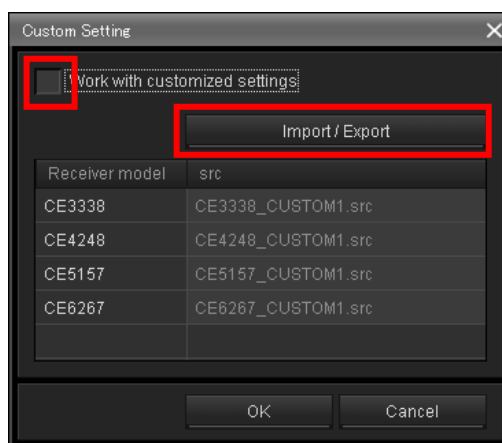
1. Start Wireless Studio.
2. Select [About(A)] -> [Version information].



3. Click the [OK] while holding down Shift-key.



4. Uncheck [Work with customized settings], and click [OK].



5. If click [Yes], Wireless Studio restarts. This completes the process of erasing the custom settings for Wireless Studio.



3.8 Confirming Custom Settings in Transmitters and Receivers

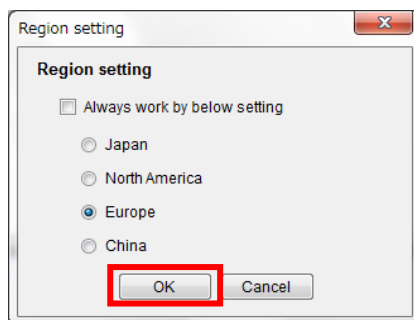
Preparations

Connect to the transmitter(s) and receiver(s) beforehand with USB or Ethernet cables.

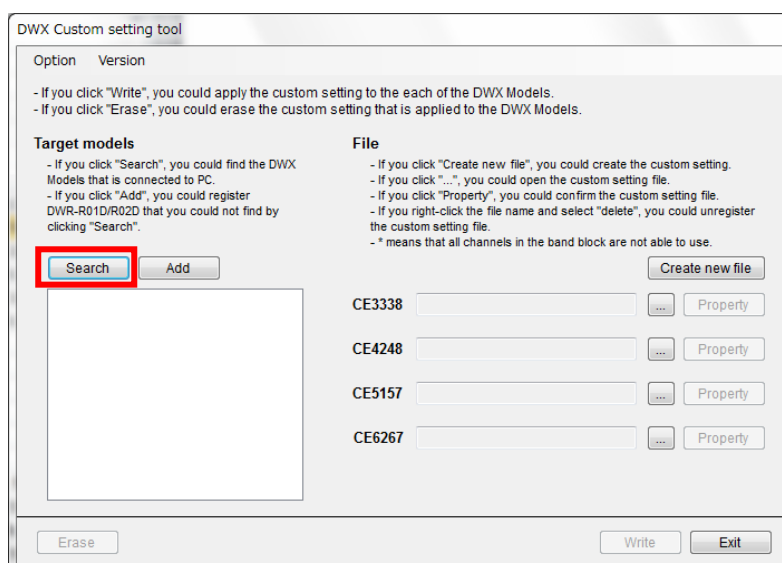
If you connect the USB cable PC and Transmitter or Receiver, we recommend that you do not use USB-Hub. By using USB-Hub, DWX Custom setting Tool might fail write custom settings, erasing custom settings, and reading custom settings. If you fail, please confirm 6.1 Problems with DWX Custom Setting Tool.

Procedure

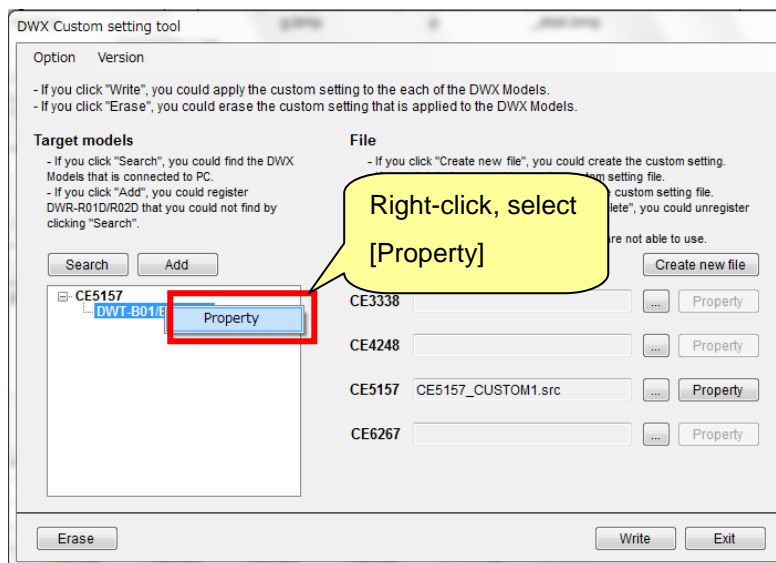
1. Select Start menu -> All Programs -> Sony DWL Flash Write Tool -> DWX Custom Setting Tool to start the DWX Custom Setting Tool.
2. Select the region for use, and click [OK]. (Select [Always work by below setting] to retain the same selection for the next time.)



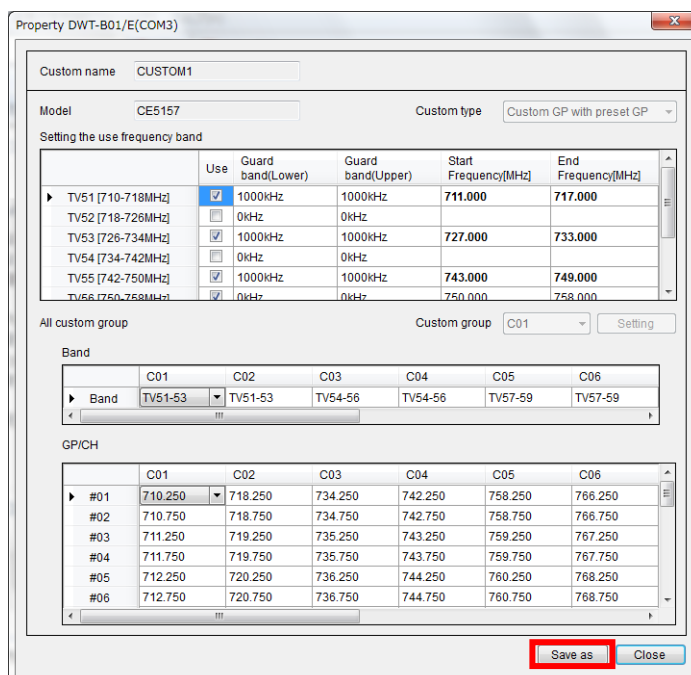
3. Click [Search].



4. Select the detected transmitter or receiver by Right-click, select [Property].

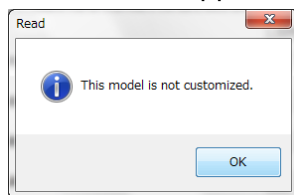


5. If your selected model is customized, the custom setting appears. In addition, by clicking [Save as], you will able to save a custom setting.



If your selected model is not customized, the screen of "This model is not

customized." appears.

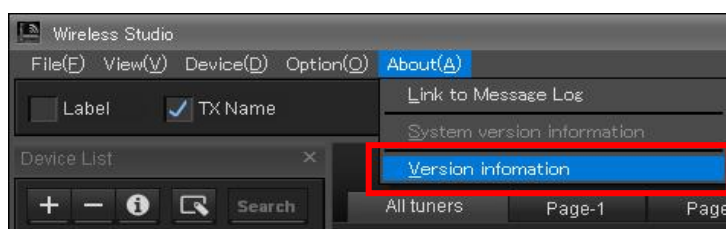


3.9 Confirming Custom Settings in Wireless Studio

Use the following procedure to verify that custom settings have been applied to Wireless Studio. It uses the DWX Custom Setting Tool to verify settings file information based on the custom settings file name applied in Wireless Studio.

Procedure

1. Start Wireless Studio.
2. Select [About(A)] -> [Version information].

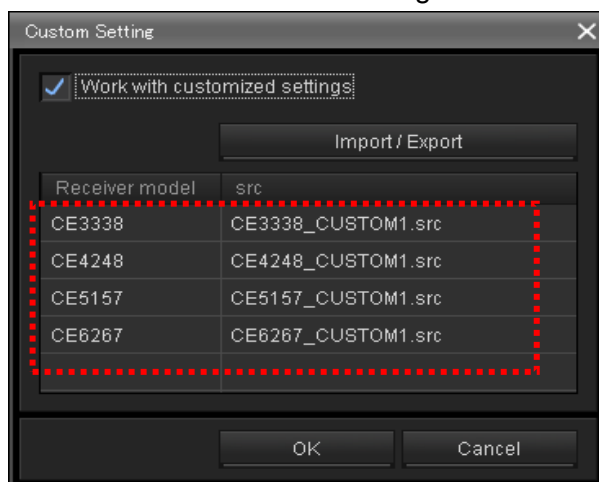


3. Click the [OK] while holding down Shift-key.

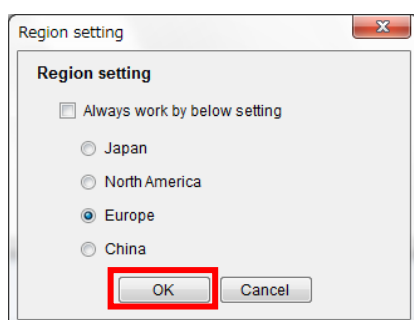


Click the [OK]
while holding
down Shift-key.

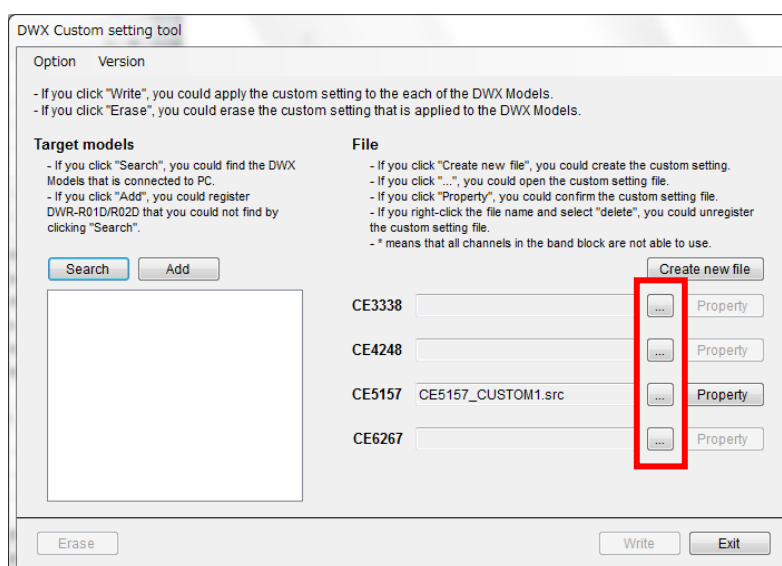
- The file names of custom setting for each of destination appears.



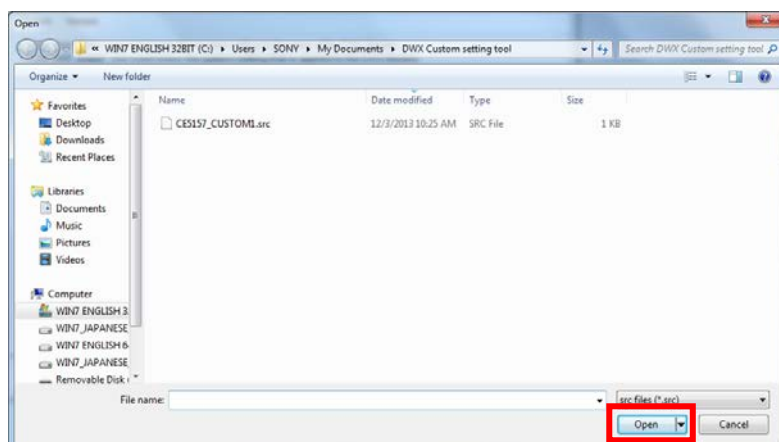
- Select Start menu -> All Programs -> Sony DWL Flash Write Tool -> DWX Custom Setting Tool to start the DWX Custom Setting Tool.
- Select the region for use, and click [OK]. (Select [Always work by below setting] to retain the same selection for the next time.)



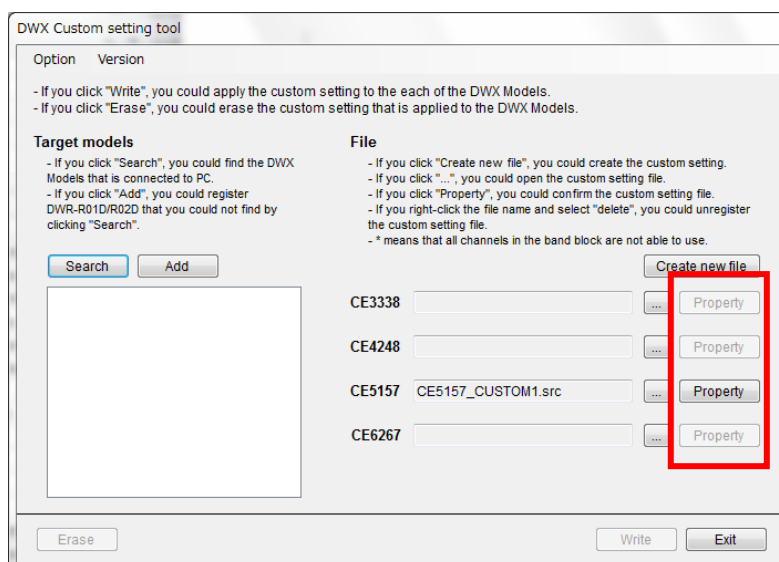
- Click [...] that you want to confirm the settings of destination.



8. Select the custom setting file that is displayed in 4, click [Open].



9. Click [Property].



10. The custom setting of your select the file appears. Please confirm the current custom settings.

Property CE5157_CUSTOM1.src

Custom name CUSTOM1

Model CE5157 Custom type Custom GP with preset GP

Setting the use frequency band

	Use	Guard band(Lower)	Guard band(Upper)	Start Frequency(MHz)	End Frequency(MHz)
▶ TV51 [710-718MHz]	<input checked="" type="checkbox"/>	1000kHz	1000kHz	711.000	717.000
TV52 [718-726MHz]	<input type="checkbox"/>	0kHz	0kHz		
TV53 [726-734MHz]	<input checked="" type="checkbox"/>	1000kHz	1000kHz	727.000	733.000
TV54 [734-742MHz]	<input type="checkbox"/>	0kHz	0kHz		
TV55 [742-750MHz]	<input checked="" type="checkbox"/>	1000kHz	1000kHz	743.000	749.000
TV56 [750-758MHz]	<input checked="" type="checkbox"/>	0kHz	0kHz	750.000	758.000

All custom group Custom group C01 Setting

Band

	C01	C02	C03	C04	C05	C06
▶ Band	TV51-53	TV51-53	TV54-56	TV54-56	TV57-59	TV57-59

GP/CH

	C01	C02	C03	C04	C05	C06
▶ #01	710.250	718.250	734.250	742.250	758.250	766.250
#02	710.750	718.750	734.750	742.750	758.750	766.750
#03	711.250	719.250	735.250	743.250	759.250	767.250
#04	711.750	719.750	735.750	743.750	759.750	767.750
#05	712.250	720.250	736.250	744.250	760.250	768.250
#06	712.750	720.750	736.750	744.750	760.750	768.750

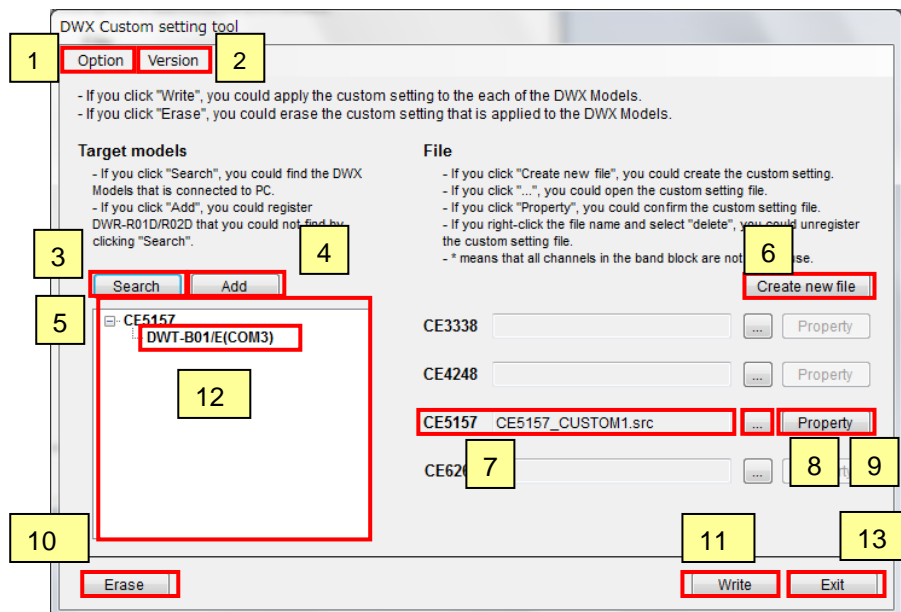
Save as Close

4. Using Each Application

4.1 Using the DWX Custom Setting Tool

4.1.1 Setting Items and Functions

i) Top Window



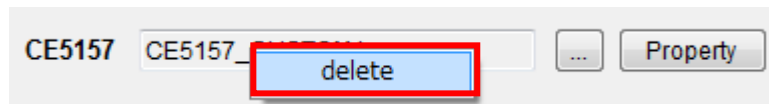
1. This is the Option menu. You can change the region for use.



A) When using the DWX Custom Setting Tool the first time, you can choose whether the region will be selectable or not. When this item is checked, the region setting window appears at

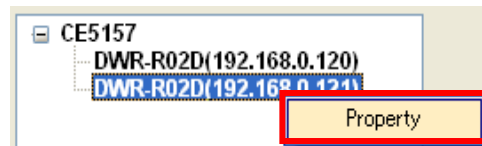
startup. When the check box is unchecked, startup is from the top window without displaying the region setting window.

- B) You can select the region.
 - C) Apply the setting. To change the region setting, restart the DWX Custom Setting Tool.
 - D) Cancel changes to settings.
2. This is the Version menu. You can confirm the version of the DWX Custom Setting Tool .
 3. You can search for transmitters and receivers connected to the PC. Transmitters and receivers found are displayed in the list.
 4. If a receiver (DWR-R01D or DWR-R02D) connected to the PC cannot be found by [Search], register it manually. (For details, see the screen description in iv) Add a new device.)
 5. This is a list of the transmitters and receivers connected to the PC. It shows the transmitters and receivers found by the [Search] button or registered by the [Add] button. Those registered in the custom settings file appear in bold.
 6. This is used to create new custom settings. For usage, see “3.3 How To Create Custom Settings.
 7. The names of the custom settings files registered at each destination are displayed. In addition, when you right-click the custom file name, the menu will appear. If you select [delete], the custom file will be unregistered.



8. This button registers custom settings files. Click it to select a custom setting file to use.
9. Click this button to confirm custom settings file information. (For details, see the screen description in ii) Custom Settings Window.)

10. Erases customs settings from the transmitters and receivers registered in item 5. For usage, see “3.6 Deleting Custom Settings in Transmitters and Receivers”
11. Applies the customs settings to the transmitters and receivers registered in item 5. For usage, see “3.4 Applying Custom Settings to Transmitters and Receivers”.
12. Loads the customs settings into the transmitters and receivers registered in item 5. Right click on a transmitter or receiver to display the context menu. Select [Property] in the menu to verify the custom settings in the selected transmitter or receiver.

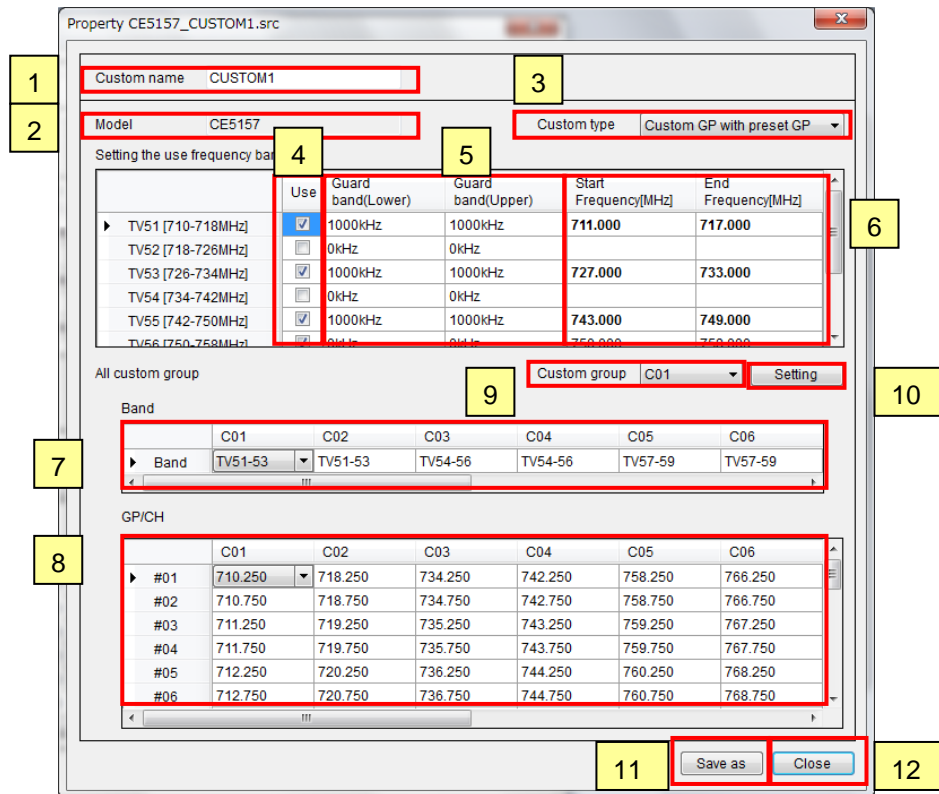


For usage, see “3.8 Confirming Custom Settings in Transmitters and Receivers”.

13. Closes the DWX Custom Setting Tool .

ii) Custom Settings Window

Confirm custom settings in this window. Here you can edit custom settings.

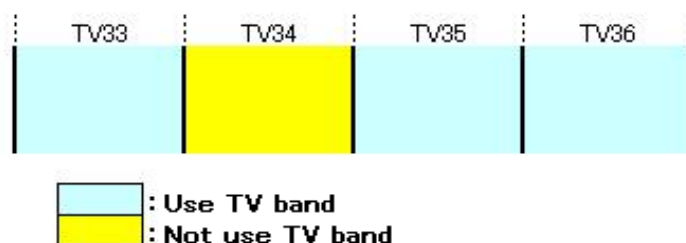


- Names can be assigned to custom settings. The name entered here is displayed in the transmitter and receiver version menus. For usage, see “3.4 Applying Custom Settings to Transmitters and Receivers”.
- The custom setting destination is displayed. (You cannot edit the destination.)
- You can edit the types of frequency groups displayed for transmitters and receivers.

Setting Type	Setting Contents
Custom GP with preset GP	Shows edited custom groups together with existing preset groups
Custom GP Only	Shows only edited custom groups.

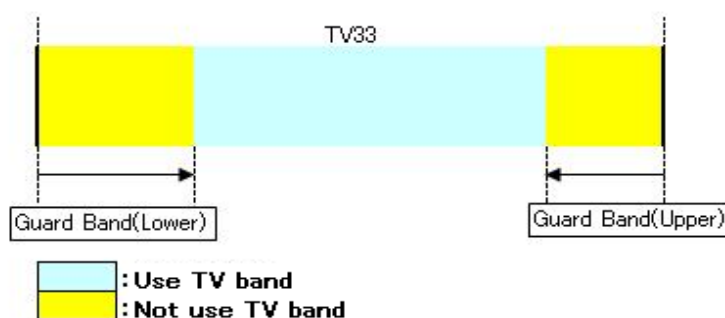
- From the TV broadcast bands, edit those which are to be used or not. Frequency groups corresponding to those bands you do not want to use do not appear as selection candidates for transmitters

and receivers.



Setting	Setting Contents
Checked	Handle as a frequency band to be used.
Unchecked	Handle as a frequency band not to be used.

- For those TV broadcast bands to be used, the unused adjacent bands can be finely adjusted. Guard bands up to 1 MHz on either side of each TV band can be specified in 125-kHz steps.



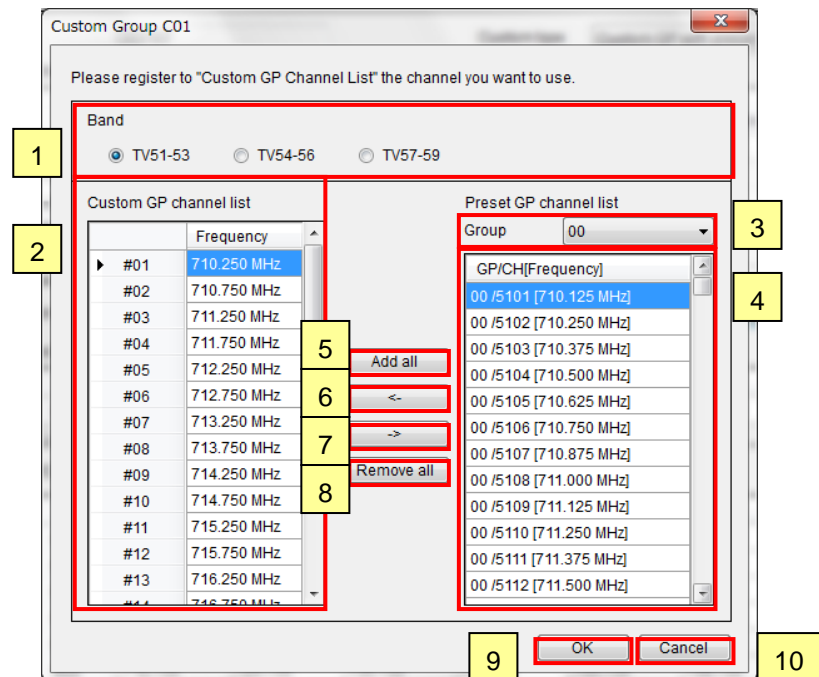
- The displayed frequency ranges reflect the adjustments in 4 and 5 above.
- You can edit the BAND information of any configurable frequency group. When the BAND is changed, the corresponding frequency group is cleared.
- You can register the channel information of any configurable frequency group. You can have up to 12 configurable frequency groups. Up to 24 channels can be registered in each group.
- You can select the group number in the advanced settings of the custom group.
- The advanced settings window of the custom group selected in 9 above is displayed. For usage, see "iii) Custom Group Settings Window".

11. Save the editing custom settings to a file.

12. Close the Custom Settings window.

iii) Custom Group Settings Window

This window appears when you click the [Setting] button in the Custom Settings window. Here, frequencies to be used can be registered from the preset group to the custom group selected in the Custom Settings window.

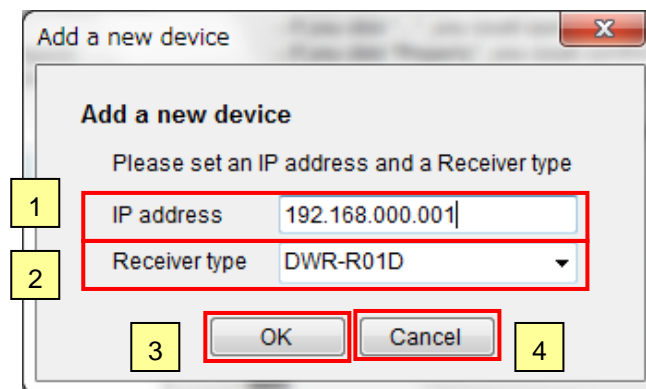


1. This is the BAND selection. When this is changed, the custom and preset group lists are cleared .
2. This is the custom group frequency list.
It shows the frequencies registered from the preset group.
3. You can select the preset group.
4. This is the preset group frequency list.
5. Up to 24 channels can be registered to the custom group from the frequency list of the preset group.
6. Frequencies selected in the frequency list of the preset group are registered to the custom group.
7. Frequencies selected in the frequency list of the custom group are removed.

8. Removes all frequencies in the custom group.
9. Applies the custom group settings and returns to the custom settings window. Setting changes are applied to the custom settings window.
10. Cancels any changes and returns to the custom setting window. Setting changes are not applied to the custom settings window.

iv) Add a new device Window

This window appears when you click [Add] in the top window. Here, DWR-R01D and DWR-R02D devices not found by [Search] can be registered manually.



1. Enter the IP address of the DWR-R01D or DWR-R02D to register.
2. Select the receiver model (DWR-R01D or DWR-R02D) to register.
3. Starts communications with the IP address registered in 1. When the receiver at the registered IP address is found, it appears in the list in the top window.
4. This cancels the settings and closes the window.

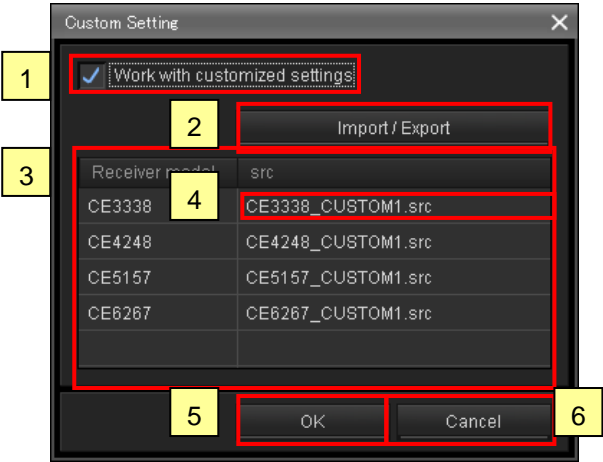
4.2 Using Wireless Studio

4.2.1 Setting Items and Functions

i) Top Window

This window appears when you hold the Shift key while clicking [OK] in Wireless Studio's version display window. From this window you can apply

custom settings to Wireless Studio .



1. Select whether to use custom settings

Setting	Contents
Checked	Wireless Studio uses custom settings.
Unchecked	Wireless Studio does not use custom settings.

2. Click to display the Import/Export window from which to load (import) and read (export) custom settings to and from Wireless Studio. For usage, see “ii) Import/Export Window”.
3. These are the custom settings (file names) used by Wireless Studio. When [Work with customized settings] is not checked, these are grayed out and not selectable.
4. Custom settings to be applied are independently selected for each destination. Combo box choices consist of custom setting file names, and blank display. When [Work with customized settings] is not checked, these are not selectable.

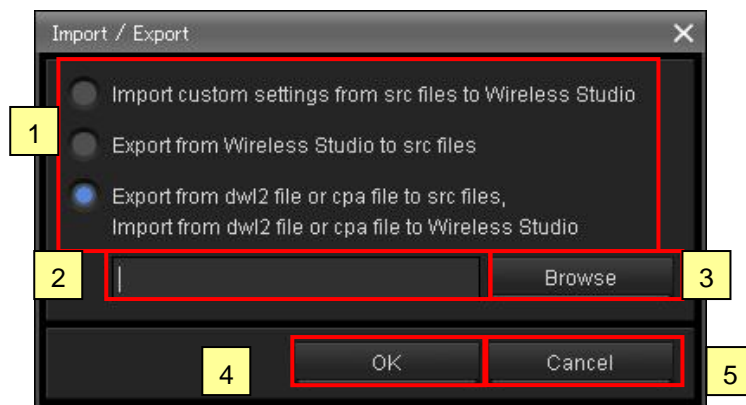
Setting Type	Contents
Custom settings file name	Wireless Studio operates according to the custom settings of the selected destination
Blank display	Wireless Studio operates according to normal settings of the selected destination

5. Applies Wireless Studio custom settings, and restarts the program.

6. This cancels any changes and closes the window.

ii) Import/Export Window

This window appears when you click [Import/Export] in the top window. From this window you can load (Import) and read (Export) custom settings to and from Wireless Studio as custom settings files, load custom settings into Wireless Studio from dwl2 files (Wireless Studio settings files) or cpa files (Channel Plan Advisor settings files), or read (Export -> Import) the information in custom settings files.



1. Select from the following processes.

Setting	Contents
Import custom settings from src files to Wireless Studio	Applies custom settings file information to Wireless Studio. For usage, see “3.5 Applying Custom Settings to Wireless Studio”.
Export from Wireless Studio to src files	Stores the custom settings applied to Wireless Studio as a custom settings file. For usage, see “5.1Applying Wireless Studio Custom Settings to Transmitters and Receivers”
Export from dwl2 file or cpa file to src files, Import from dwl2 file or cpa file to Wireless Studio	Reads the custom settings saved in dwl2 or cpa files as custom setting files, and applies these to Wireless Studio. For usage, see “5.3 Using Wireless Studio to apply Custom Settings from Transmitters and Receivers to Other Transmitters and Receivers”.

2. Shows the name of the dwl2 or cpa file selected with the [Browse] button. This file is used for Export -> Import processing.
3. Select the dwl2 or cpa file to use for Export -> Import processing .
4. This executes the operation (Import, Export, or Export -> Import) selected in 1 above.
5. This cancels any changes and closes the window.

5. Various Operations

5.1 Applying Wireless Studio Custom Settings to Transmitters and Receivers

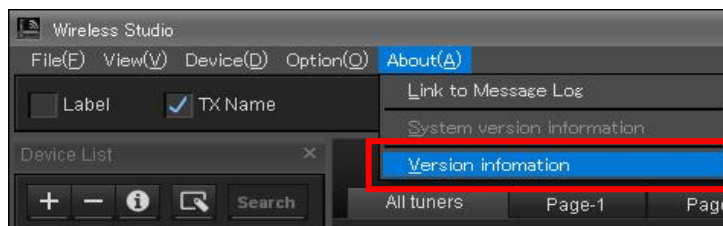
Custom settings applied to Wireless Studio can be read and applied to the transmitters and receivers. The procedure is described here.

Precondition

Custom settings must have been applied to Wireless Studio .

Procedure

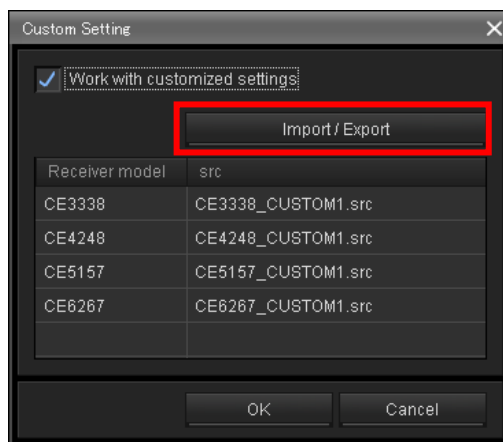
1. Start Wireless Studio.
2. Select [About(A)] -> [Version information].



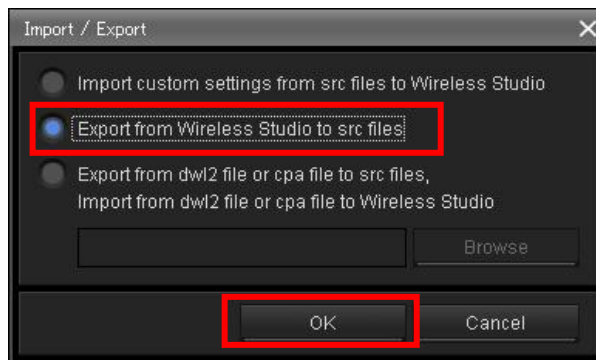
3. Click the [OK] while holding down Shift-key.



4. The following screen appears, and click [Import/Export].

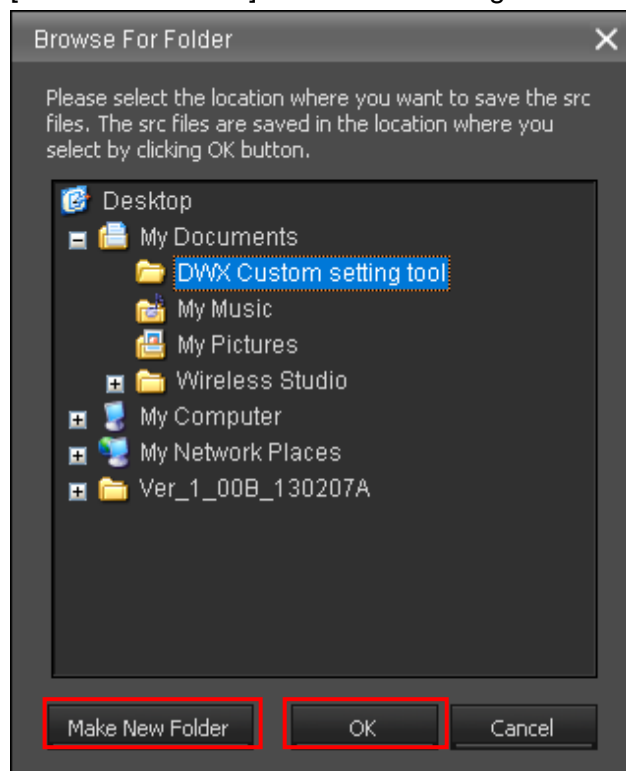


5. Select [Export from Wireless Studio to src files], and click [OK].

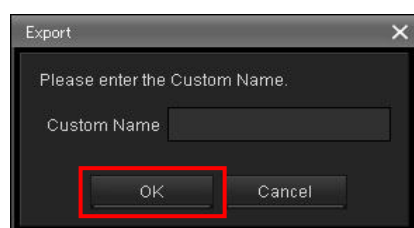


6. Select the save location for the custom settings file. When several custom settings files are created, we recommend creating a new folder by clicking

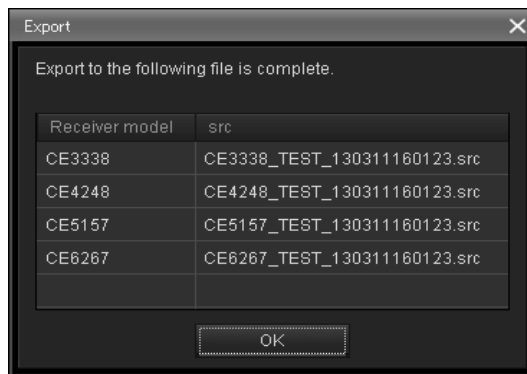
[Make New Folder]. After determining the save location, click [OK].



7. Enter the custom settings name, and click [OK]. The custom settings name entered here is displayed for the transmitters and receivers. For confirmation after applying the custom settings, see “3.4 Applying Custom Settings to Transmitters and Receivers”.



8. When processing is complete, "Export to the following file is complete." appears. Export processing is finished. Also, note that custom settings are not created for destinations to which they are not applied.



These custom settings files can be applied to transmitters and receivers using the DWX Custom Setting Tool. For usage, see “3.4 Applying Custom Settings to Transmitters and Receivers”.

5.2 Using Wireless Studio to apply Custom Settings from dwl2 and cpa Files to Transmitter and Receivers

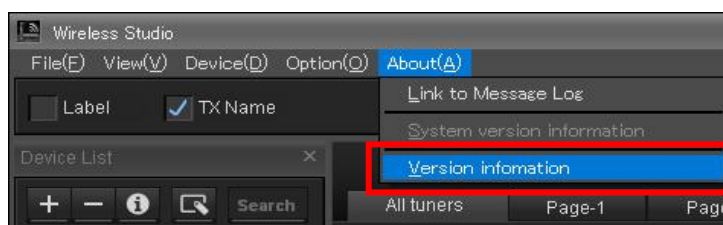
Since Wireless Studio version 3.03, custom settings are saved to dwl2 and cpa files. Correct operation is not possible unless the custom settings in the dwl2 and cpa files match. Here is the procedure for applying custom settings saved in dwl2 and cpa files to transmitters, receivers, and Wireless Studio.

Precondition

You will use dwl2 file or cpa file that are save in Wireless Studio(Version 3.03 and more).

Procedure

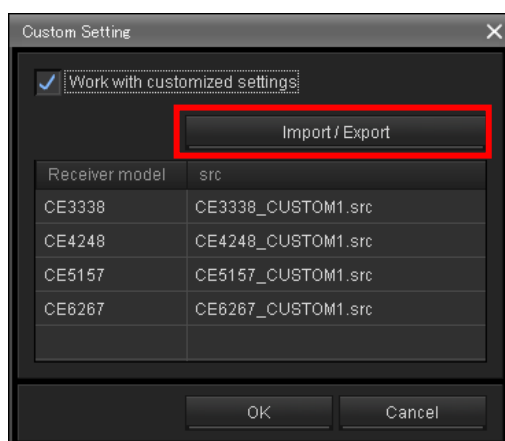
1. Start Wireless Studio.
2. Select [About(A)] -> [Version information].



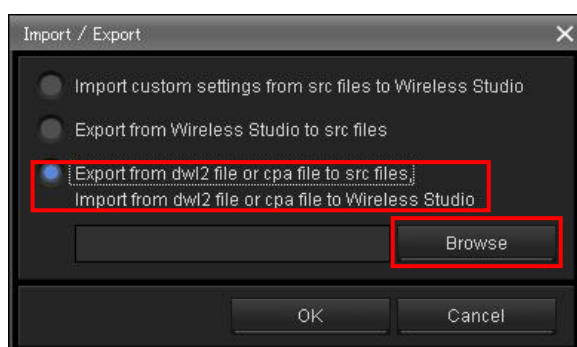
3. Click the [OK] while holding down Shift-key.



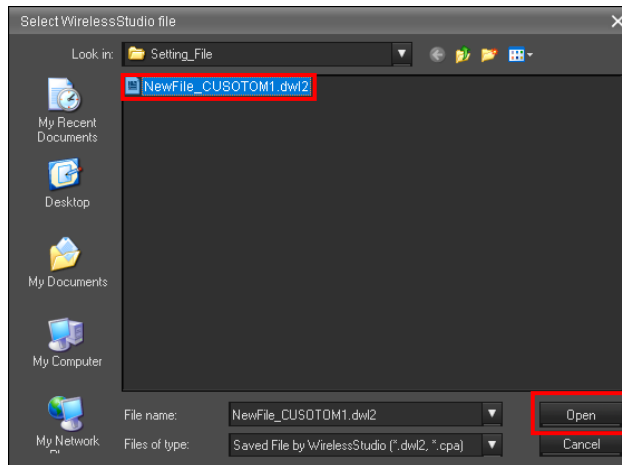
4. The following screen appears, and click [Import/Export].



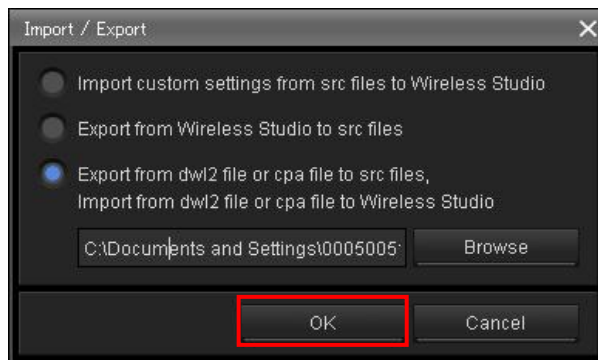
5. Select [Export from dwl2 file or cpa file to src files, Import from dwl2 file or cpa file to Wireless Studio], and click [Browse].



6. Select dwl2 file or cpa file, and click [Open].

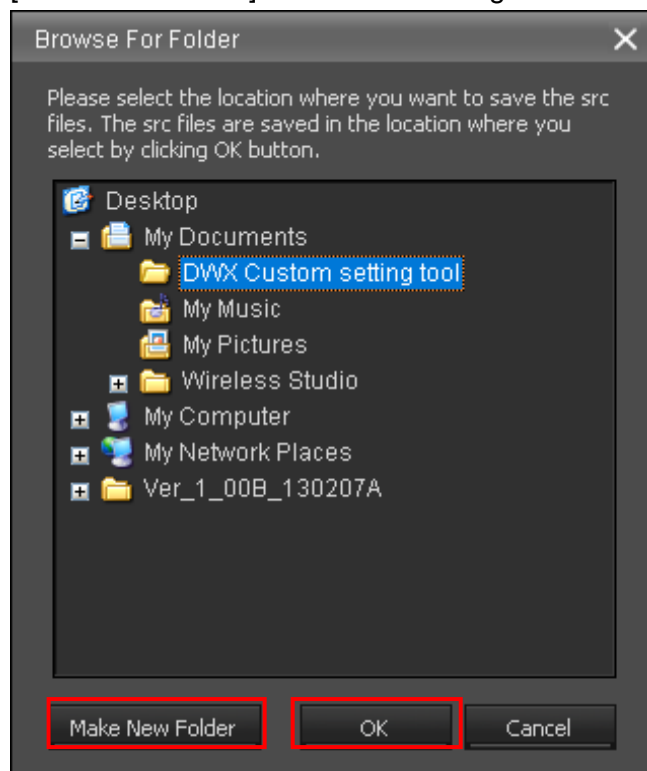


7. If the following screen appears, click [OK].

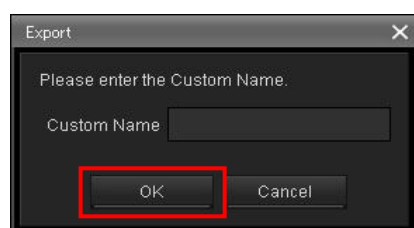


8. Select the save location for the custom settings file. When several custom settings files are created, we recommend creating a new folder by clicking

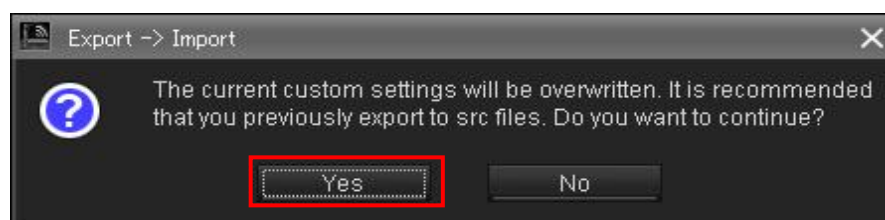
[Make New Folder]. After determining the save location, click [OK].



9. Enter the custom settings name, and click [OK]. The custom settings name entered here is displayed for the transmitters and receivers. For confirmation after applying the custom settings, see “3.4 Applying Custom Settings to Transmitters and Receivers”.

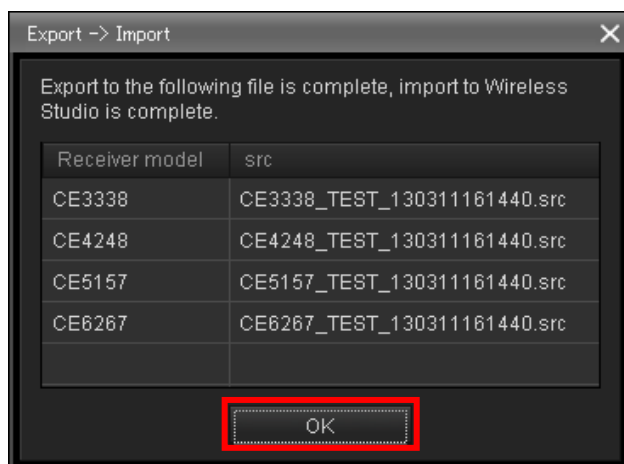


10. Click [Yes].

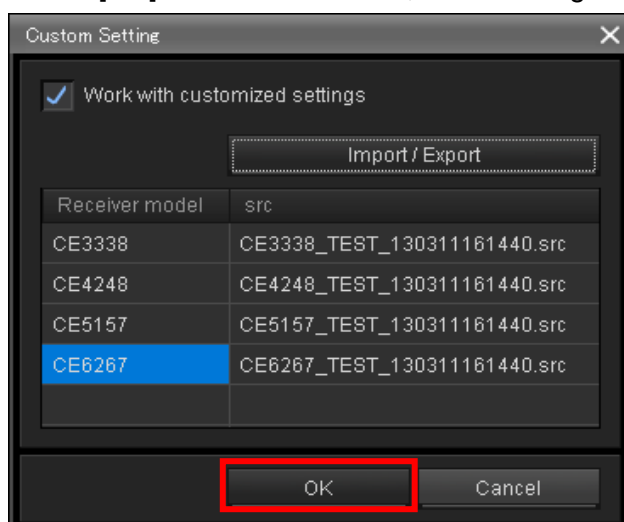


11. When "Export to the following file is complete, import to Wireless Studio is complete" appears, click [OK]. Also, note that custom settings are not

created for destinations to which they are not applied.



12. If click [OK] in the screen of 11, the following screen appears. Click [OK].



13. If click [Yes], Wireless Studio restarts. This completes the process of importing the custom settings for Wireless Studio.



Next, apply the created custom settings file to transmitters and receivers using the DWX Custom Setting Tool. About how to use, please refer to 3.4 Applying Custom Settings to Transmitters and Receivers.

5.3 Using Wireless Studio to apply Custom Settings from Transmitters and Receivers to Other Transmitters and Receivers

Here is the procedure to apply custom settings that have already been applied to another transmitter or receiver. Also described is the procedure for applying these custom settings to Wireless Studio.

Precondition

The Transmitter or the receiver has been already imported the custom setting.

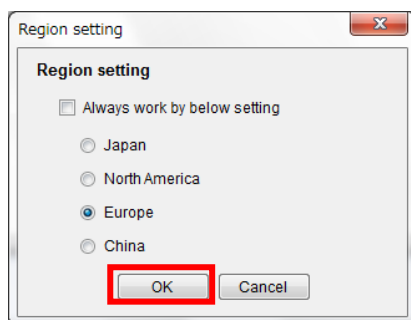
Preparation

Connect to the transmitter(s) and receiver(s) beforehand with USB or Ethernet cables.

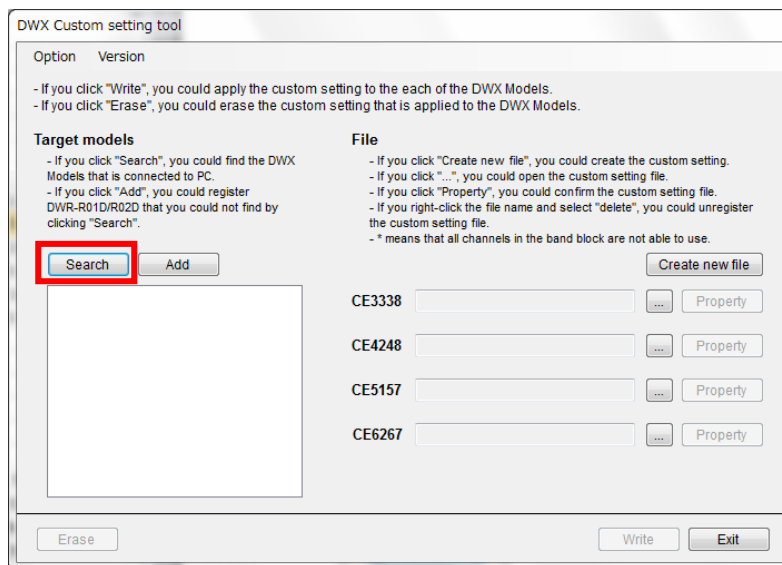
If you connect the USB cable PC and Transmitter or Receiver, we recommend that you do not use USB-Hub. By using USB-Hub, DWX Custom setting Tool might fail write custom settings, erasing custom settings, and reading custom settings. If you fail, please confirm 6.1 Problems with DWX Custom Setting Tool.

Procedure

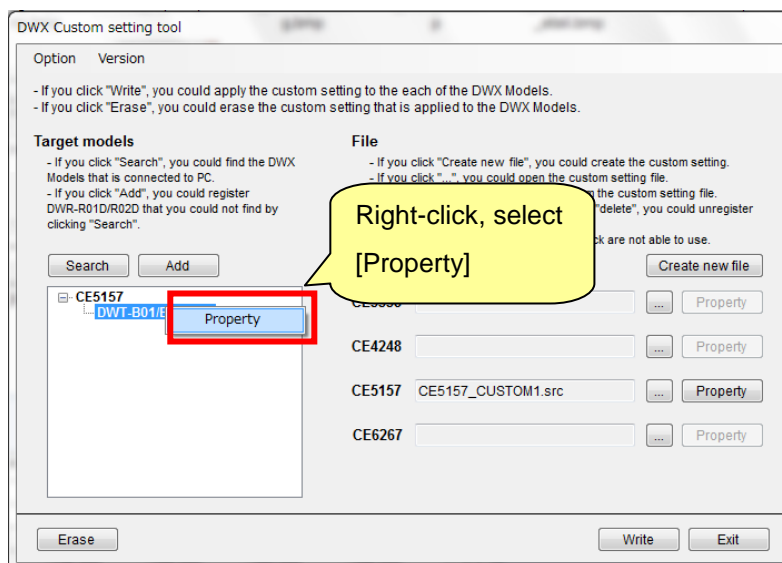
1. Select Start menu -> All Programs -> Sony DWL Flash Write Tool -> DWX Custom Setting Tool to start the DWX Custom Setting Tool.
2. Select the region for use, and click [OK]. (Select [Always work by below setting] to retain the same selection for the next time.)



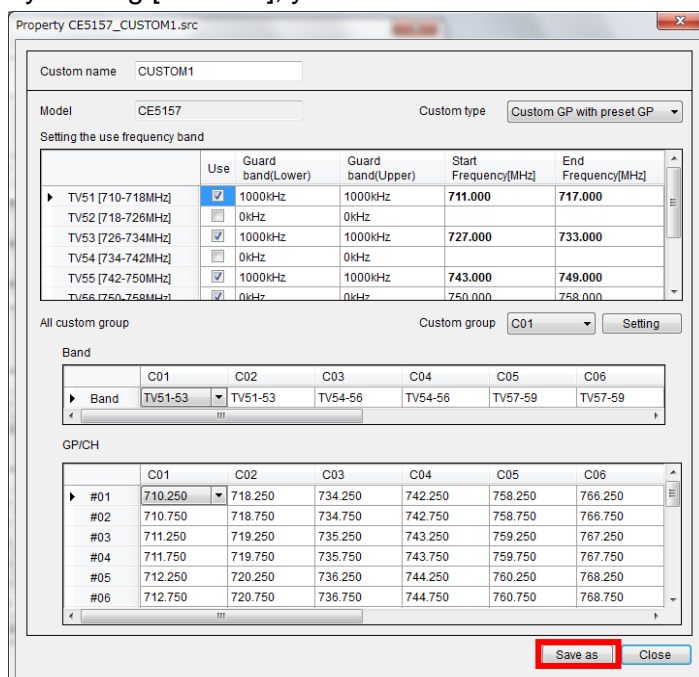
3. Click [Search].



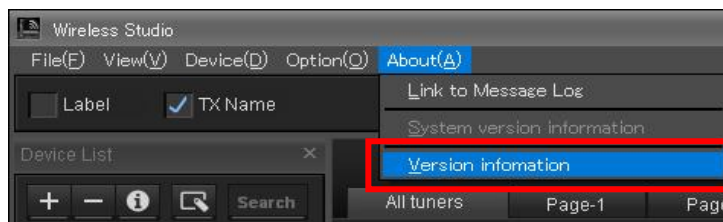
4. Select the detected transmitter or receiver by Right-click, select [Property].



5. If your selected model is customized, the custom setting appears. In addition, by clicking [Save as], you will be able to save a custom setting.



6. Start Wireless Studio.
7. Select [About(A)] -> [Version information].

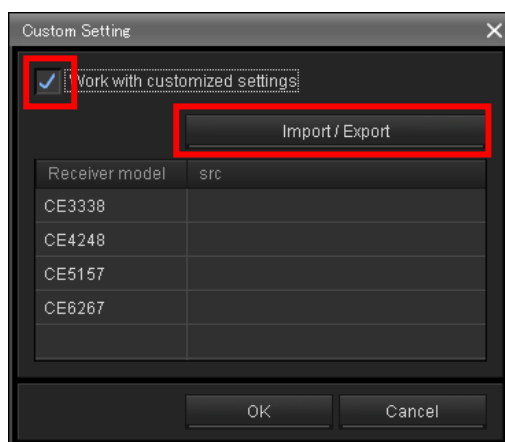


8. Click the [OK] while holding down Shift-key.

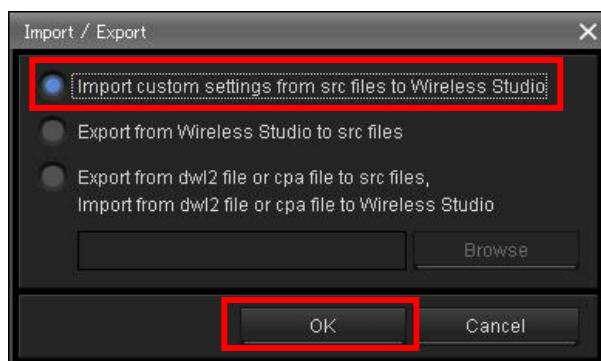


Click the [OK] while holding down Shift-key.

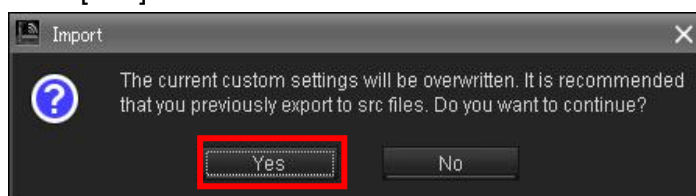
9. Check [Work with customized settings], and click [Import/Export].



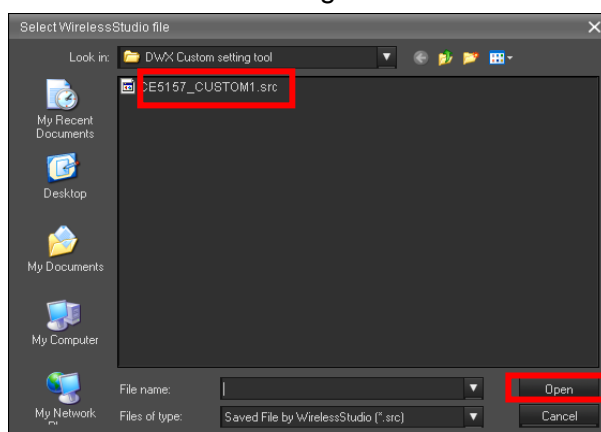
10. Select [Import custom settings from src files to Wireless Studio], and click [OK].



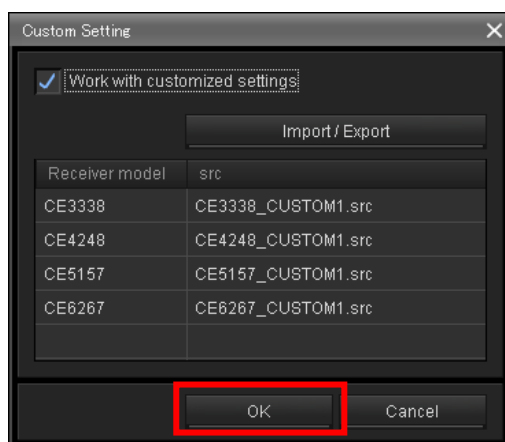
11. Click [Yes].



12. Select the custom setting file that is saved in 5, and click [Open].



13. If the process of importing the custom settings is complete, click [OK].



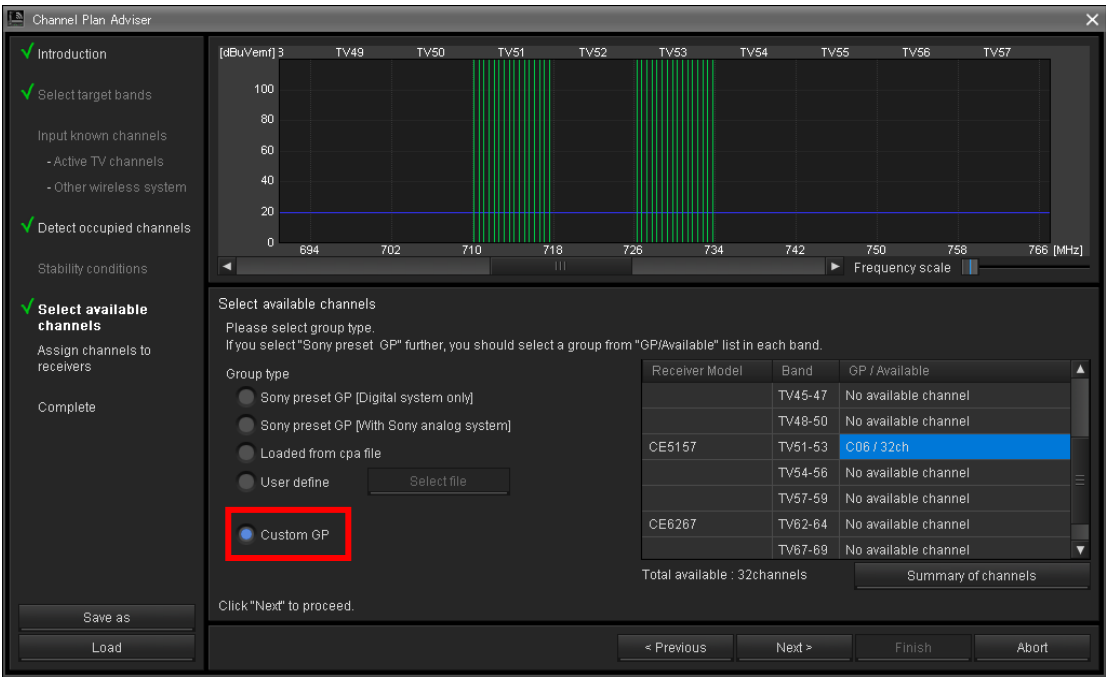
14. If click [Yes], Wireless Studio restarts. This completes the process of importing the custom settings for Wireless Studio.



5.4 Using Channel Plan Advisor with Custom Groups

Custom groups applied to Wireless Studio can be used with Channel Plan Advisor. Here is the procedure. In the “Select available channels” window of the Channel Plan Advisor, select [Custom GP]. (These choices are displayed only when Wireless Studio is configured to operate with custom settings.) In this way, you can select the best combination from the custom groups. The remainder of the procedure is the same as usual in Channel Plan Advisor. For details, see the Wireless Studio User’s

Guide.



6. Troubleshooting

Causes and remedies for problems that can occur with the DWX Custom Setting Tool, Wireless Studio and specific models are described here.

6.1 Problems with DWX Custom Setting Tool

Error message	Cause	Remedy
DWX Custom Setting Tool has detected the following old version models. It is not able to use their models. Please update the latest version by using DWX Updater.	The models connected to the PC include some older versions.	First upgrade the firmware with DWX Updater, then perform a "Search".
The process of erasing the custom setting is failed. Please erase the custom setting again by using DWX Custom setting tool.	There may be a faulty USB or Ethernet connection between the PC and device.	Confirm the connection status of the PC and device, and repeat the "Erase" with the DWX Custom Setting Tool.
The process of erasing the custom setting is failed. After you have updated by using DWX Updater, please erase the custom setting by using DWX Custom setting tool.	While erasing, power to the transmitter or receiver may have been cut, or the cable to the PC disconnected.	Confirm the connection status of the PC and device, update again using DWX Updater, and repeat the "Erase" with the DWX Custom Setting Tool.
The process of writing the custom setting is failed. Please write the custom setting again by using DWX Custom setting tool.	There may be a faulty USB or Ethernet connection between the PC and device.	Confirm the connection status of the PC and device, and repeat the "Write" with the DWX Custom Setting Tool.
The process of writing the custom setting is failed.	While writing custom settings, power to the transmitter or receiver may have been cut, or	Confirm the connection status of the PC and device, update again using DWX Updater, and repeat

After you have updated by using DWX Updater, please write the custom setting by using DWX Custom setting tool.	the cable to the PC disconnected.	the “Write” with the DWX Custom Setting Tool.
The process of reading the custom setting is failed. Please read the custom setting again by using DWX Custom setting tool.	There may be a faulty USB or Ethernet connection between the PC and device.	Confirm the connection status of the PC and device, and repeat the “Read” with the DWX Custom Setting Tool.
The process of reading the custom setting is failed. After you have updated by using DWX Updater, please read the custom setting by using DWX Custom setting tool.	While reading custom settings, power to the transmitter or receiver may have been cut, or the cable to the PC disconnected.	Confirm the connection status of the PC and device, update again using DWX Updater, and repeat the “Read” with the DWX Custom Setting Tool.
Your edited file is not able to use as the Custom Setting. Please confirm the follow things. - All of the setting of 'use' in 'Setting the use frequency band' are Unchecked. - The setting of 'Custom type' is 'Custom GP Only', and, the setting of frequency is not set at all. - The setting of 'Custom type' is 'Custom GP Only', and, by the setting of 'Setting the use frequency band', the Custom GP is not available all.	This error occurs when no frequency is enabled. Consider the following items. - All of the “Use” check boxes for “Setting the use frequency” may be unchecked. - The “Custom type” may be set to “Custom GP Only” with no frequency information registered in the custom group. - The “Custom type” may be set to “Custom GP Only” with a registered custom group unusable because of the “Setting the use frequency” setting.	Create at least one available frequency channel when creating custom settings.
You will not be able to use by writing a custom setting for the	This error is displayed when no frequency is enabled for some transmitters or receivers.	Create at least one available frequency channel when creating

following models. Therefore, DWX Custom Setting Tool did not write a custom setting for the following models.	Consider the following items. - Example 1 - Attempting to write custom settings using only TV34-TV41 to a DWR-S01D (U3032).	custom settings.
--	---	------------------

Symptom	Cause	Remedy
Searching from the DWX Custom Setting Tool stops with the progress bar unfinished, and some transmitters and receivers are not detected.	This symptom rarely appears, but depends on the environment. (This problem might occur by using USB-Hub.)	Disconnect and reconnect the USB cables to the undetected transmitters and receivers. After restarting the undetected units, search again.
Writing, Erasing, and Reading from the DWX Custom Setting Tool stops with the progress bar unfinished, and some transmitters and receivers are failed to writing custom settings or erasing custom settings or reading custom settings.	This symptom rarely appears, but depends on the environment. (This problem might occur by using USB-Hub.)	Disconnect and reconnect the USB cables to the transmitters and receivers. Or Turn off and turn on restart to the transmitters and receivers. Next, please update the model by using DWX-Updater. Next, please writing a custom settings or erasing custom settings or reading custom settings.

6.2 Problems with Wireless Studio

Error message	Cause	Remedy
The following custom settings of DWR did not match the custom settings of Wireless Studio. They must make same the custom settings of Wireless Studio.	This error appears when custom settings of Wireless Studio, DWR-R01D and DWR-02D units do not match.	DWR-R01D, DWR-R02D と Apply the same custom settings to Wireless Studio, DWR-R01D and DWR-02D units - For convenience when using custom settings in the DWR-R01D and DWR-R02D, use

		<p>the DWX Custom Setting Tool to read the custom settings and import them into Wireless Studio. For details, see “5.3 Using Wireless Studio to apply Custom Settings from Transmitters and Receivers to Other Transmitters and Receivers”).</p> <p>- When using Wireless Studio custom settings, its Export function can be convenient. (For details, see “5.1 Applying Wireless Studio Custom Settings to Transmitters and Receivers”).)</p>
<p>The custom settings of "dwl file" did not match the custom settings of Wireless Studio. They must make same the custom settings of Wireless Studio.</p> <p>Are you sure when you open this file, you can not load the "Band", "GP/CH", and "Frequency"?</p>	<p>This message appears when attempting to open a dwl2 file that does not match current Wireless Studio custom settings.</p>	<p>To open a file, its custom setting contents must match Wireless Studio's custom settings at the time the dwl2 file was saved. For usage, see “5.2 Using Wireless Studio to apply Custom Settings from dwl2 and cpa Files to Transmitter and Receivers”.</p>
<p>The custom settings of "dwl file" did not match the custom settings of Wireless Studio. They must make same the custom settings of Wireless Studio.</p> <p>Are you sure when you open this file, you can not load the "available channels"?</p>	<p>This error appears when attempting to open a cpa file that does not match current Wireless Studio custom settings.</p>	<p>To open a file, its custom setting contents must match Wireless Studio's custom settings at the time the cpa file was saved. For usage, see “5.2 Using Wireless Studio to apply Custom Settings from dwl2 and cpa Files to Transmitter and Receivers”.</p>

6.3 Other Problems

Symptom	Cause	Remedy
When changing the frequency	Transmitter and receiver custom	Check that the custom names

<p>setting using the cross remote function from the receiver, "BAND UNMATCH", "GP UNMATCH" or "CH UNMATCH" is displayed.</p>	<p>settings do not match.</p>	<p>next to the version numbers of each device match. If the names do not match, apply the same custom settings to both.</p>
	<p>While using the cross remote, attempted to set an inappropriate frequency.</p>	<p>Select an appropriate frequency. See the Frequency List Table (separate document) for appropriate frequencies.</p>

7. Appendix

7.1 Using with Windows 8

7.1.1 Installing .net Framework 2.0

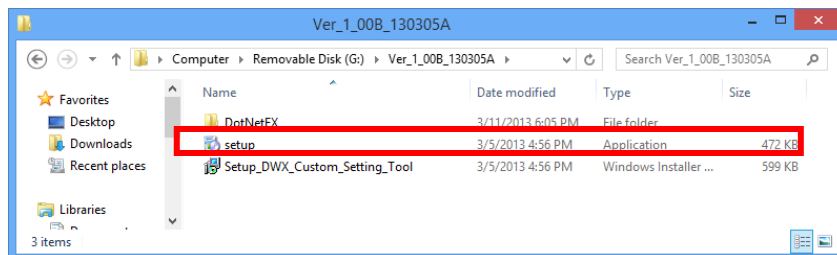
DWX Custom Setting Tool's firmware-updating software for transmitters and receivers (DWX Updater) requires .net Framework 2.0. This procedure describes how to use the ".net Framework 2.0" application with Windows 8. The particular procedure to use depends on whether the PC is connected to the internet

Installation procedure

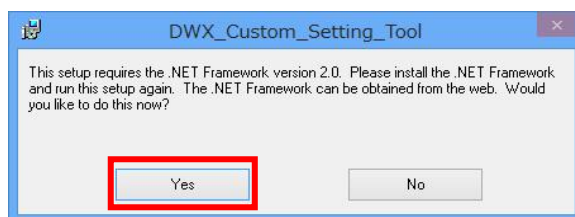
If your PC is able to connect Internet.

Procedure

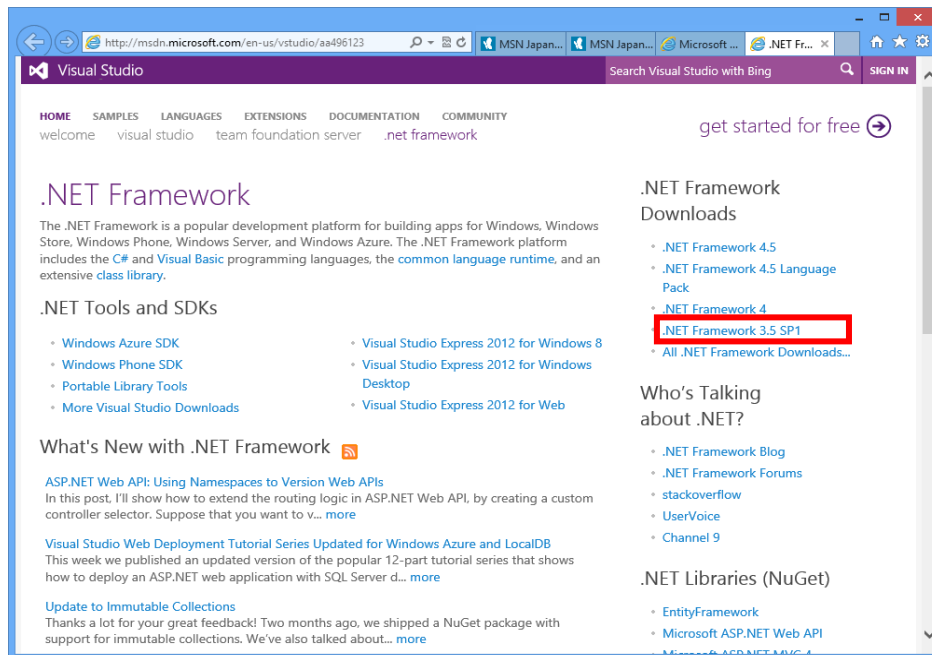
1. Double click "setup.exe" that is DWX Custom Setting Tool or DWX Updater.



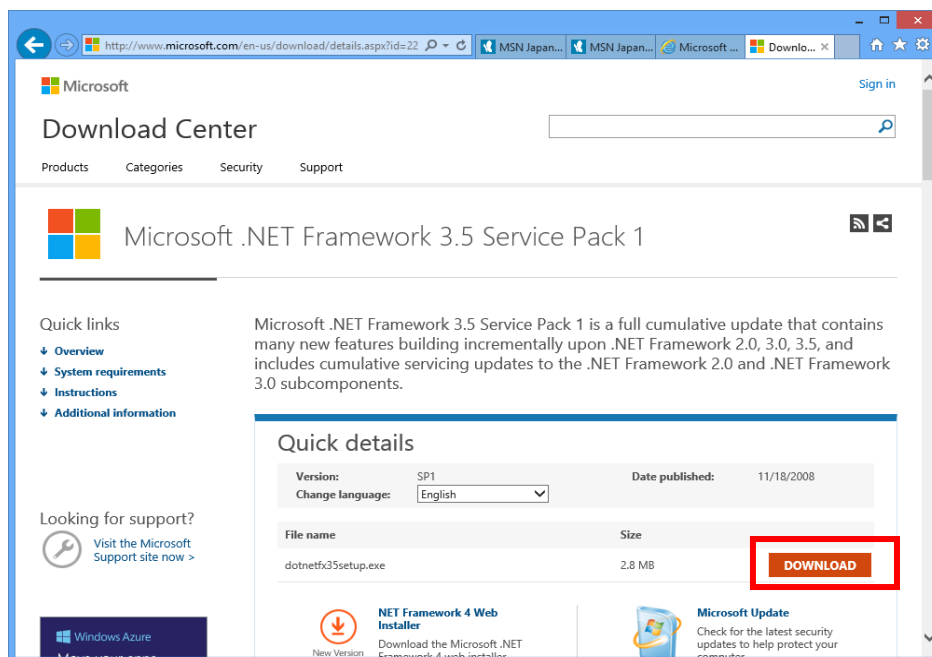
2. The following screen appears, and click [Yes].



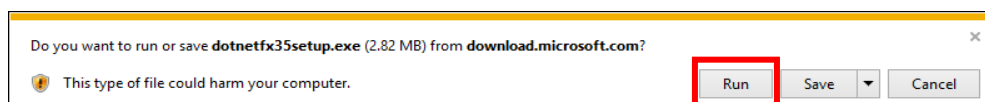
3. The following screen appears. Click [.NET Framework 3.5 SP1].



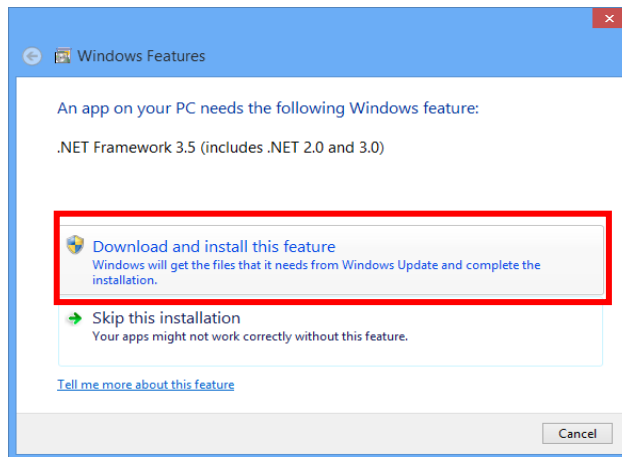
4. Click [DOWNLOAD].



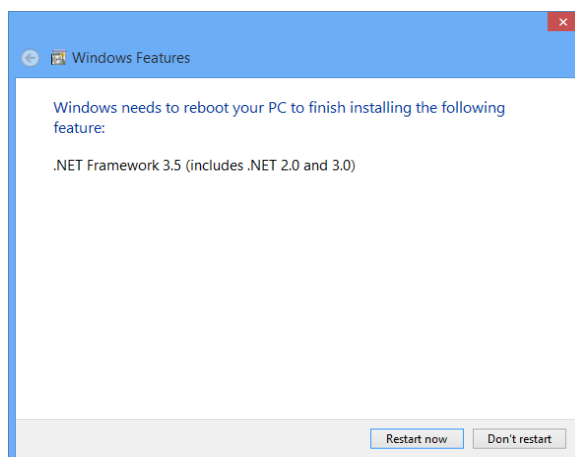
5. Click [Run].



6. Click [Download and install this feature].



7. The following screen appears. This completes setup of ".net Framework 2.0".



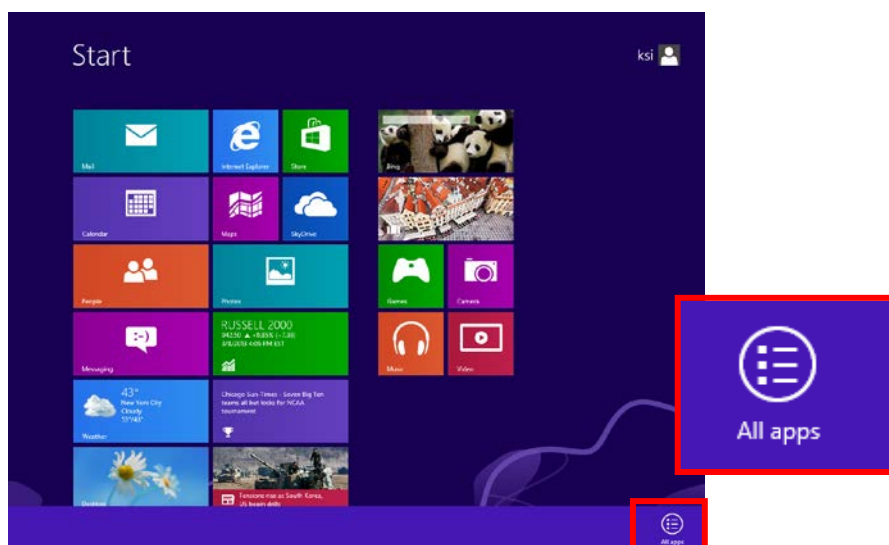
If your PC is not able to connect Internet.

Preparation

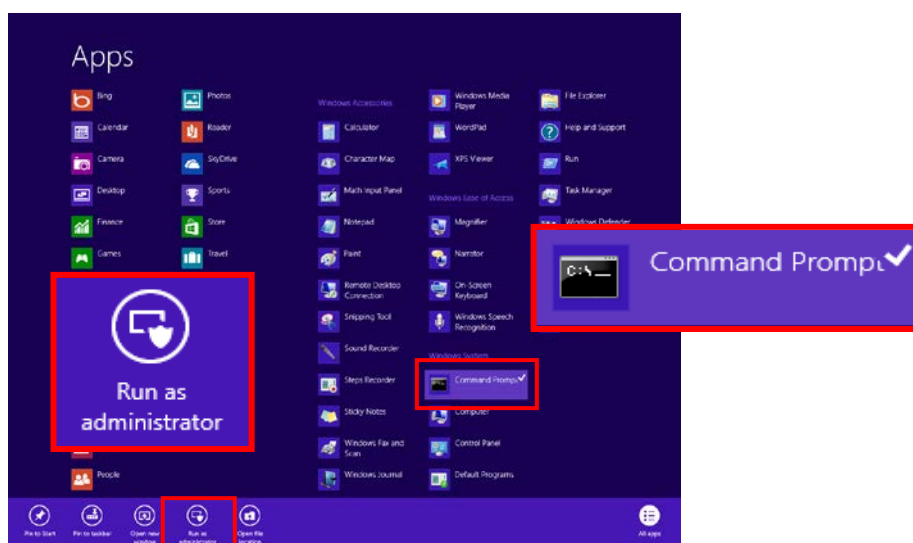
Prepare the Windows 8 installation disk, and insert the media into a DVD drive .

Procedure

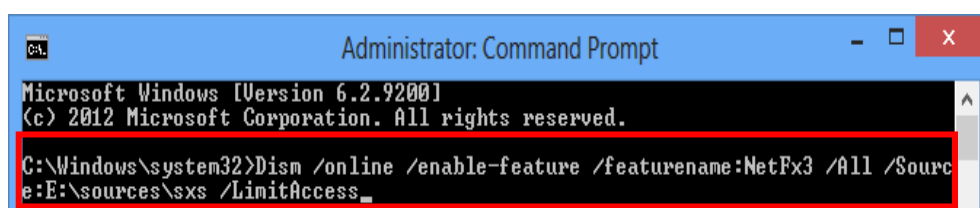
1. Right-click in start menu, and click [All apps].



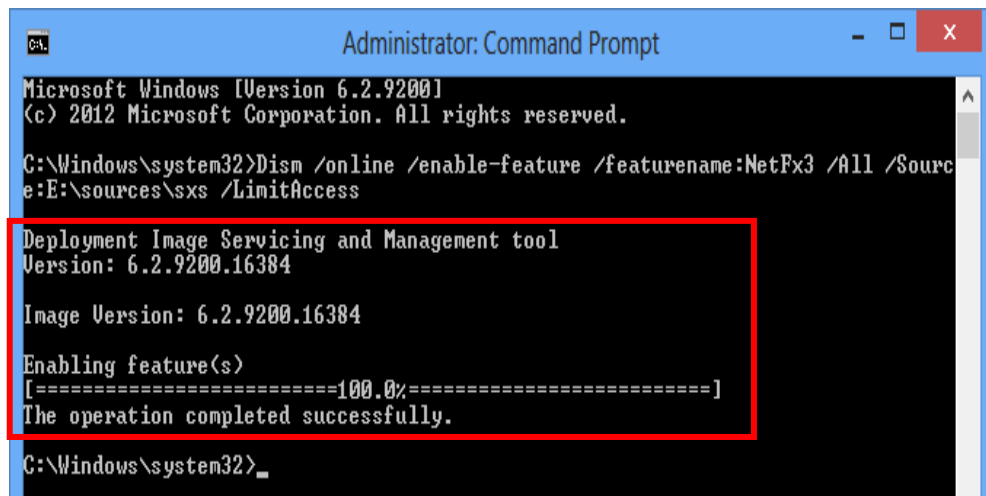
2. Right-click [Command Prompt], and click [Run as administrator].



3. Enter "Dism /online /enable-feature /featurename:NetFx3 /All /Source:X:\sources\sxs /LimitAccess", and press Enter-key. (X is the drive name. Change to match your environment. In the following diagram, the DVD drive is drive E).



4. If the process is complete, the following screen appears.



```
Administrator: Command Prompt

Microsoft Windows [Version 6.2.9200]
(c) 2012 Microsoft Corporation. All rights reserved.

C:\Windows\system32>Dism /online /enable-feature /featurename:NetFx3 /All /Source
e:E:\sources\sxs /LimitAccess

Deployment Image Servicing and Management tool
Version: 6.2.9200.16384

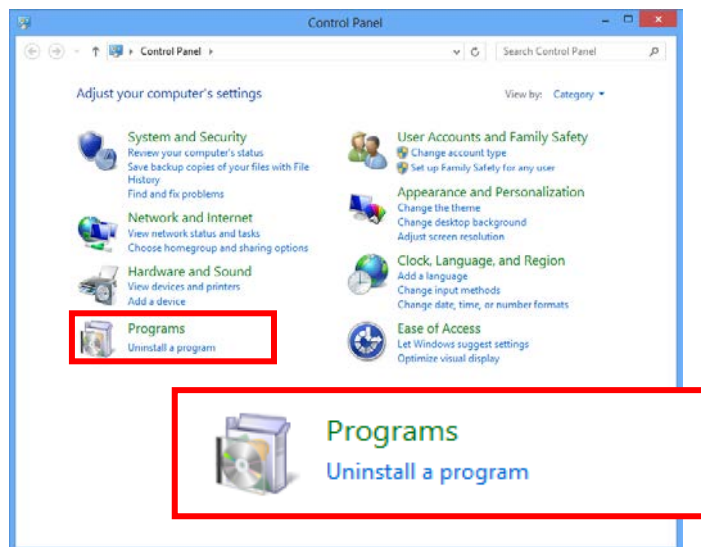
Image Version: 6.2.9200.16384

Enabling feature(s)
[=====100.0%=====]
The operation completed successfully.

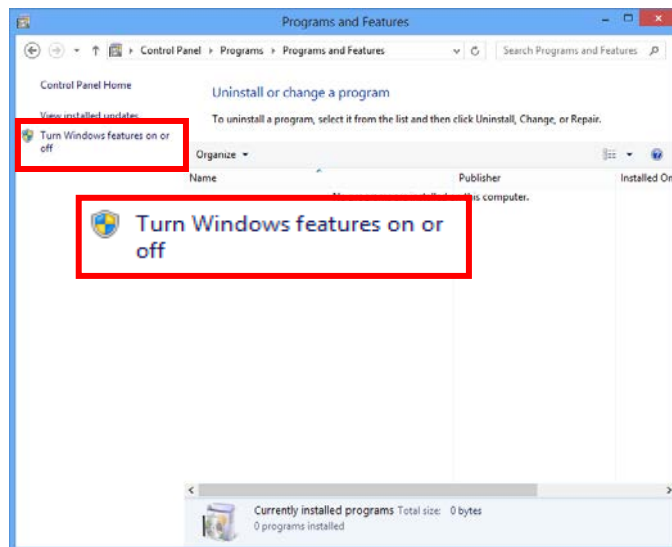
C:\Windows\system32>
```

Confirmation procedure

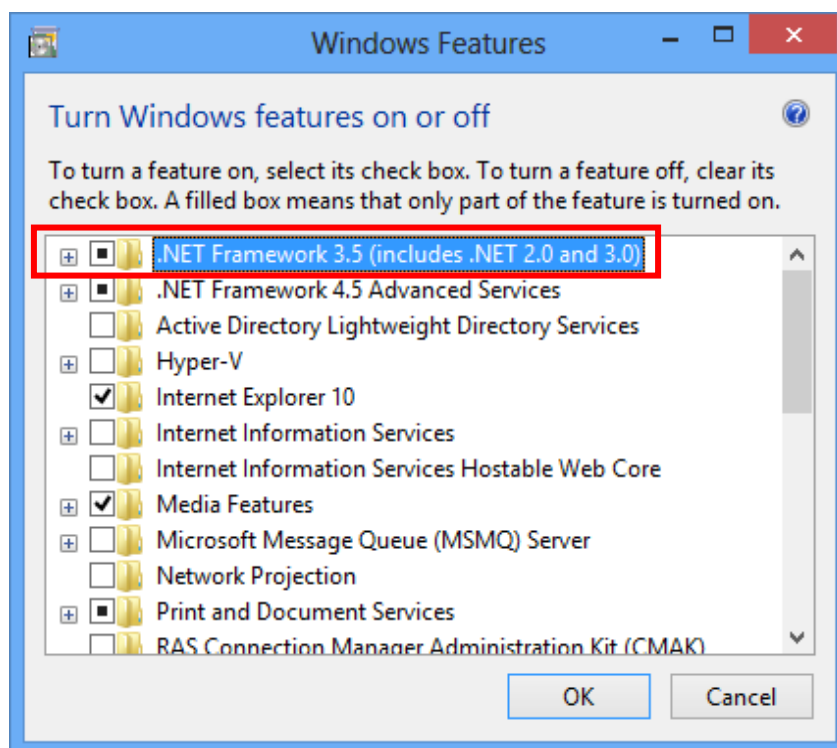
1. Open the Control Panel, click [Programs-> Uninstall a program].



2. Click [Turn Windows features on or off].



3. Confirm that [.NET Framework 3.5(.NET 2.0 and 3.0)] is checked. The procedure of confirmation is complete.



7.1.2 Installing USB Drivers

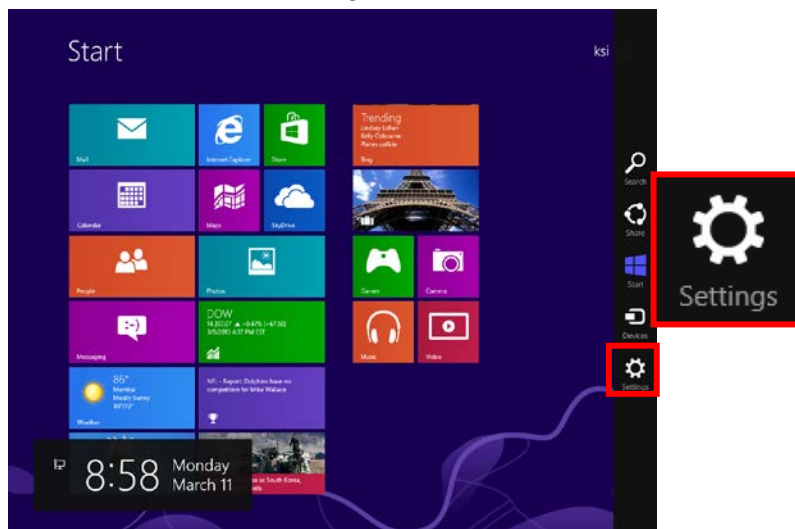
The USB driver must be installed if using USB to connect transmitters and receivers to the PC. The procedure for Windows 8 is different, as follows .

Preparation

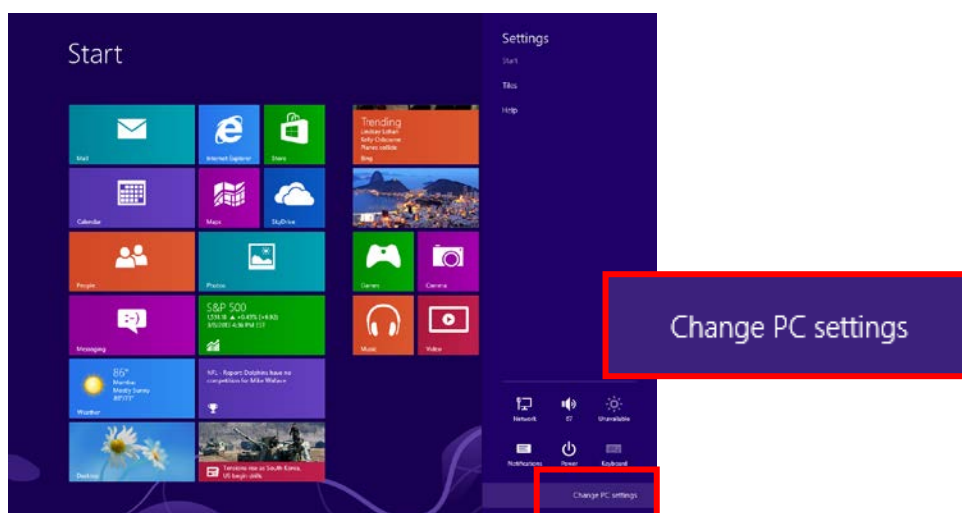
Connect to the transmitter(s) and receiver(s) beforehand with USB cables.

Installation procedure

- 1 In start menu, click [Settings].

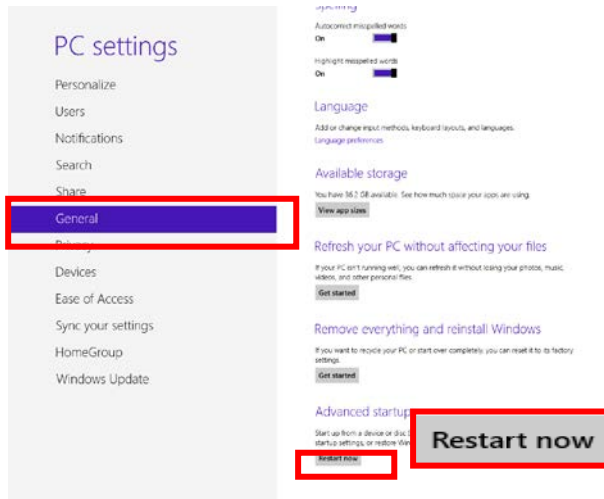


- 2 Click [Change PC settings].

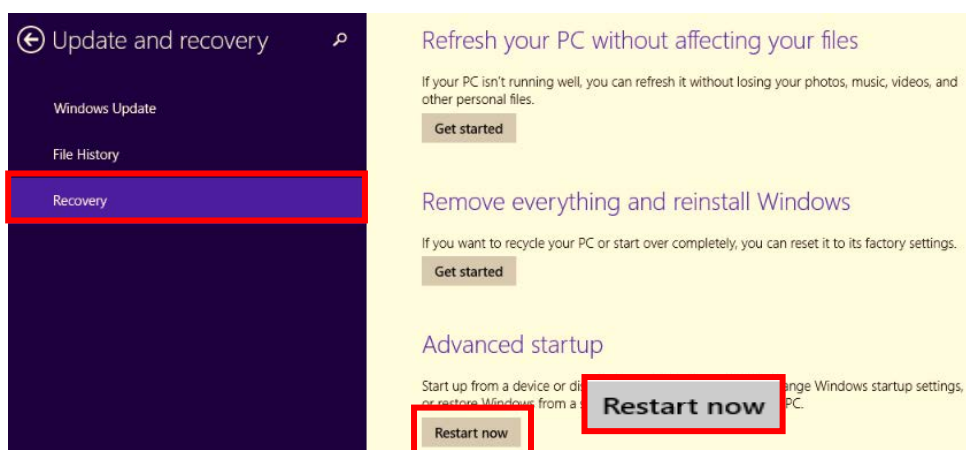
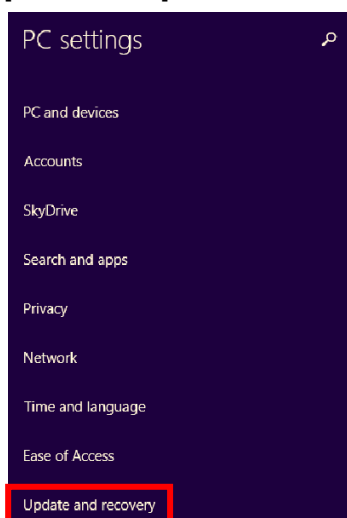


3 In this procedure, a procedure for Win 8.0 is different from the one for Win 8.1.

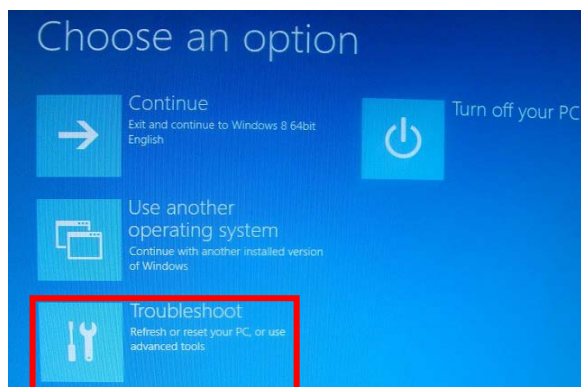
a If you use Win 8.0, select [General], and click [Restart now] in [Advanced startup].



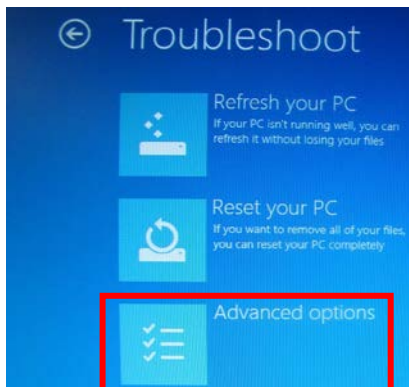
- b If you use Win 8.1, select [Update and recovery], select [Recovery], and click [Restart now] in Advanced startup.



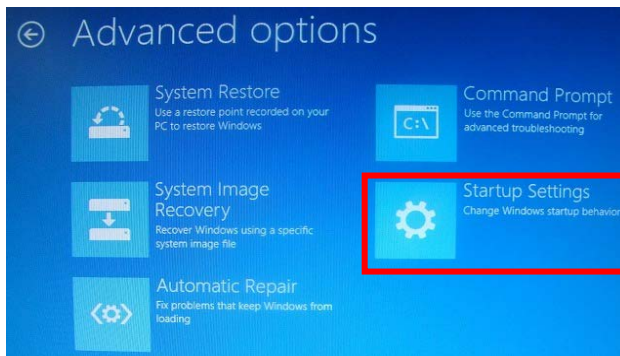
- 4 When your PC restarts, the following screen appears. Select [Troubleshoot].



- 5 Click [Advanced options].



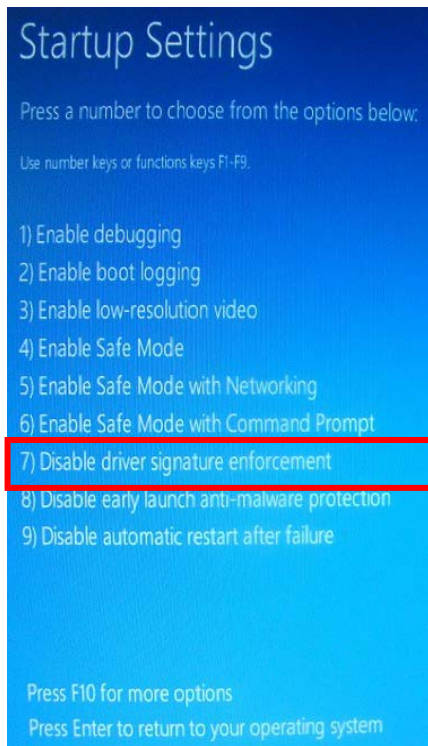
- 6 Click [Startup Settings].



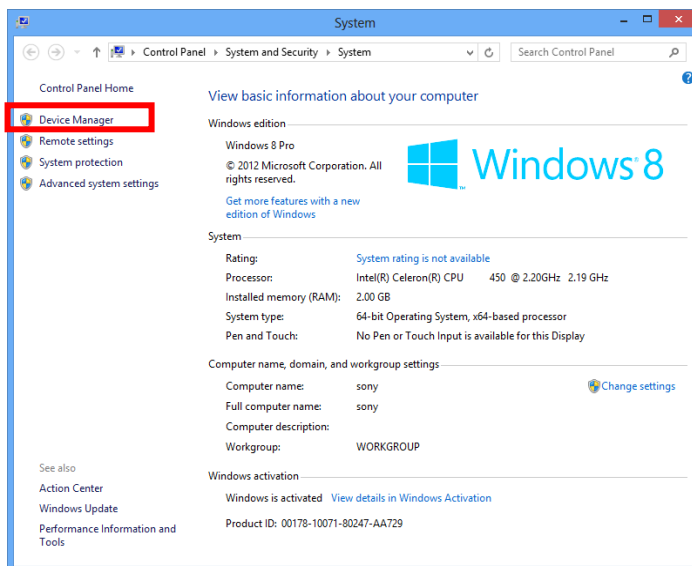
- 7 Select [Restart].



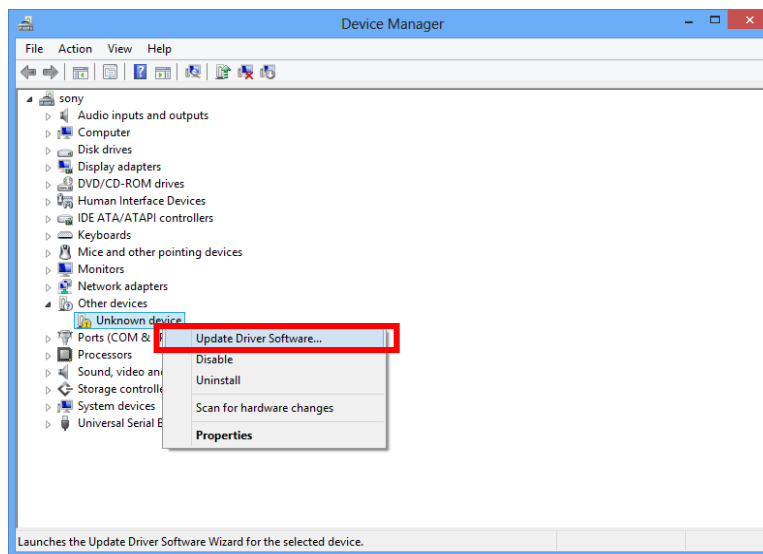
- 8 When your PC restarts, the following screen appears. Select [7] Disable driver signature enforcement].



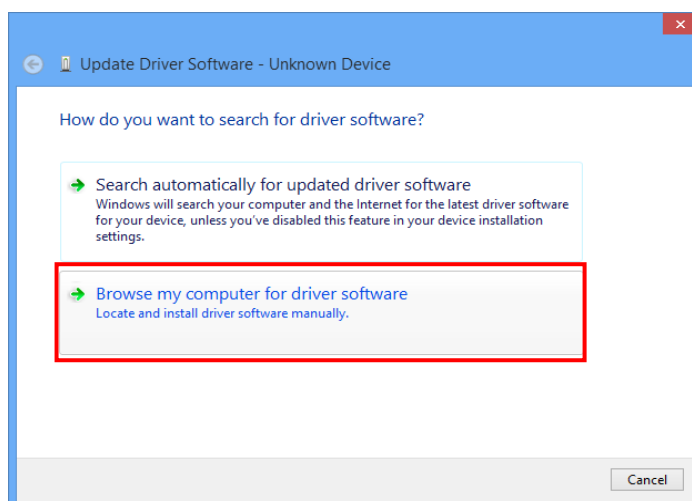
- 9 Open Control Panel, and click [Device Manager].



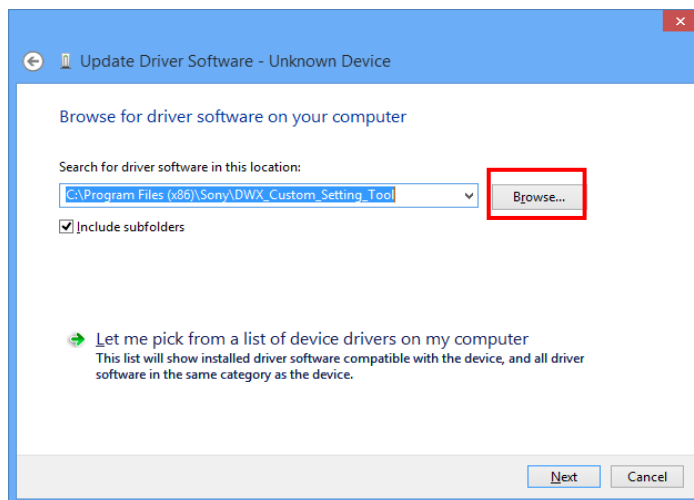
10 Right-click [Unknown device], and click [Update Driver Software...].



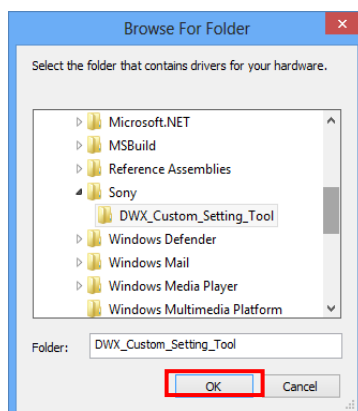
11 Click [Browse my computer for driver software].



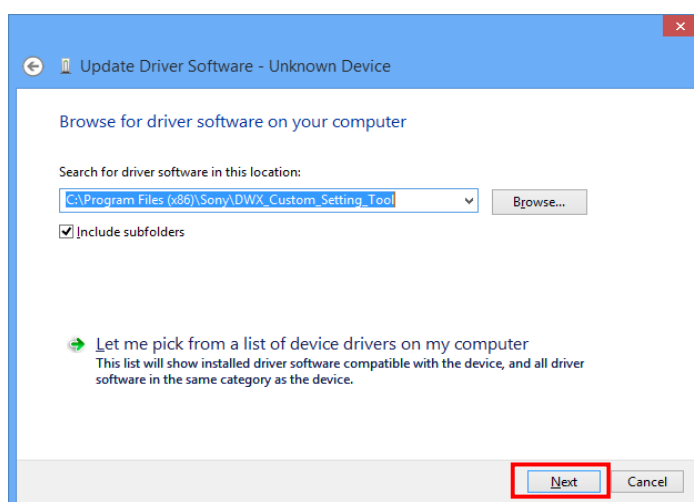
12 Click [Browse...].



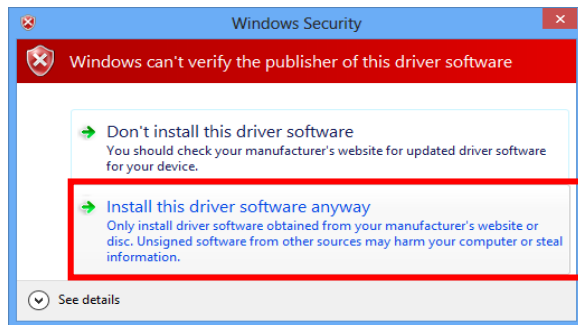
13 Select [Program Files(*)->Sony->DWX_Custom_Setting_Tool], and click [OK].
(*If your PC is 64bitOS, (*) is Program Files x86)



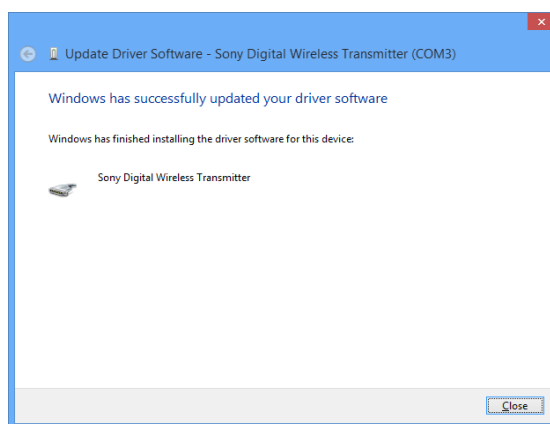
14 Click [Next].



15 The following screen appears. And click [Install this driver software anyway].



16 This completes setup of the USB driver. (The screens used are from Transmitter)



17 Please restart your PC.

7.2 Version information

The version information of DWX Custom Setting Tool is as follows.

Version	Release date	Remarks
1.00	2013/04/09	New release
1.01	2013/12/06	<ul style="list-style-type: none">● All regions<ul style="list-style-type: none">➤ Added the function that unregisters src files registered.➤ Added the function that saves src files unusable on one destination (for example U1424, CE3338, CN2935, WL ...).
1.02	2014/12/24	<ul style="list-style-type: none">● All regions<ul style="list-style-type: none">➤ In “Installing USB Drivers”, delete a procedure that input “bcdedit /set testsigning on”.➤ In “Installing USB Drivers”, add a procedure for Win 8.1.