

DWM-01 Updater

Operating Instructions

Issue Date: March 28, 2013

Table of Contents

[Overview]	3
[Functions]	3
[Preparations]	3
[About this Software]	3
[Installation Procedure]	4
[Installation Procedure for the USB Driver]	8
[Installing the USB Driver from the Device Manager]	11
[Update Procedure]	16
[Verifying Update]	17
[If Downgrade]	17
[If Update Fails]	18
[Miscellaneous]	20

[Overview]

This document serves as the operating instructions for the PC software (herein referred to as “DWM-01 Version 1.23 Updater”) that is used to update the firmware version of the DWM-01.

* The version number may vary depending on the firmware version.

[Functions]

DWM-01 Version 1.23 Updater* allows you to update the firmware on the DWM-01 to version 1.23. See the following to determine the model of your DWM-01.

[Preparations]

<Acquiring the Software File>

File name: DWM-01_Version_1_23_Updater.zip*

* The version number may vary depending on the firmware version.

<Computer>

The system requirements for using this software are as follows.

OS:	Windows XP SP2 or later, Windows Vista, Windows 7
USB cable:	USB cable supplied with unit



[About this Software]

- This manual and the software described herein may not be reproduced, leased or lent, in whole or in part, without prior written approval from Sony Corporation.
- Sony Corporation expressly disclaims all responsibility with respect to losses suffered by the customer or any third party as a result of use of this software.
- Sony Corporation shall provide replacement solely in the event of manufacturer defects.
- This software may not be used for purposes other than those specified.
- Design and specifications of this software are subject to change without notice.
- The source code of this software may not be modified, altered, reverse-engineered, decompiled, disassembled, or otherwise analyzed.
- Install this software and update the specified devices according to the procedures described in the operating instructions.

DWM-01 Updater Operating Instructions

[Installation Procedure]

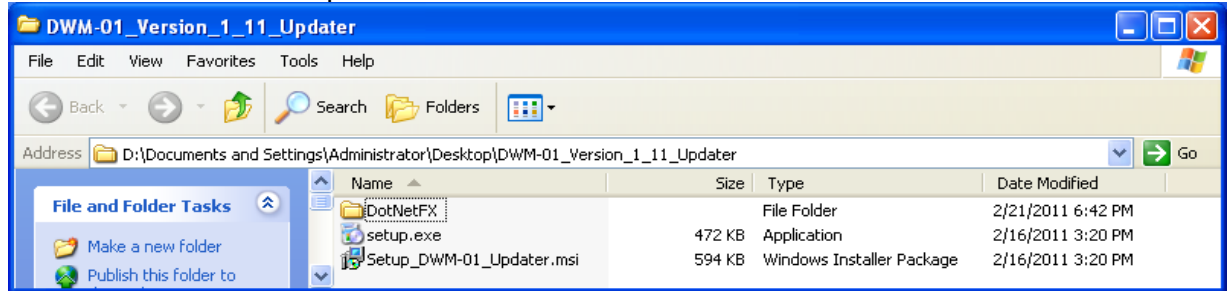
The installation procedure for DWM-01 Version 1.23 Updater follows.

The screens used are from DWM-01 Version 1.11 Updater.

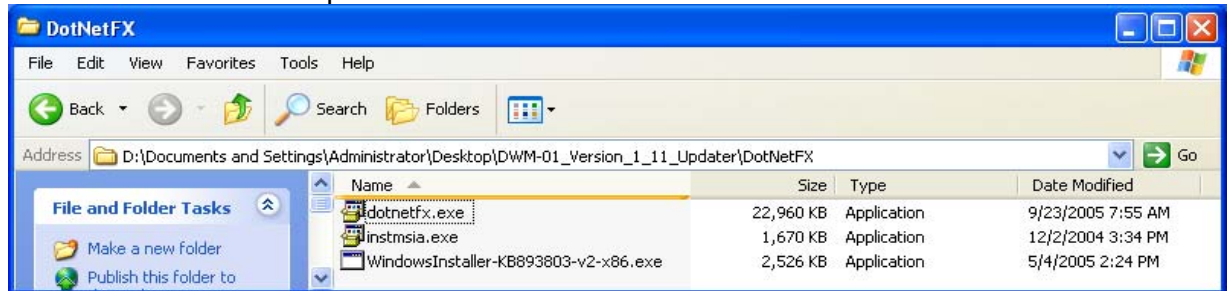
1. Starting

1.1. The folder configuration is as follows.

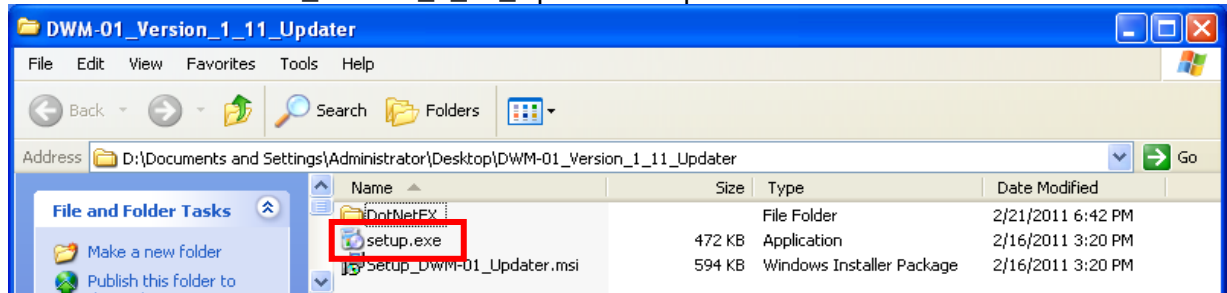
DWM-01 Version 1.23 Updater



DWM-01 Version 1.23 Updater \DotNetFx



1.2. Double-click "DWM-01_Version_1_23_Updater\setup.exe."



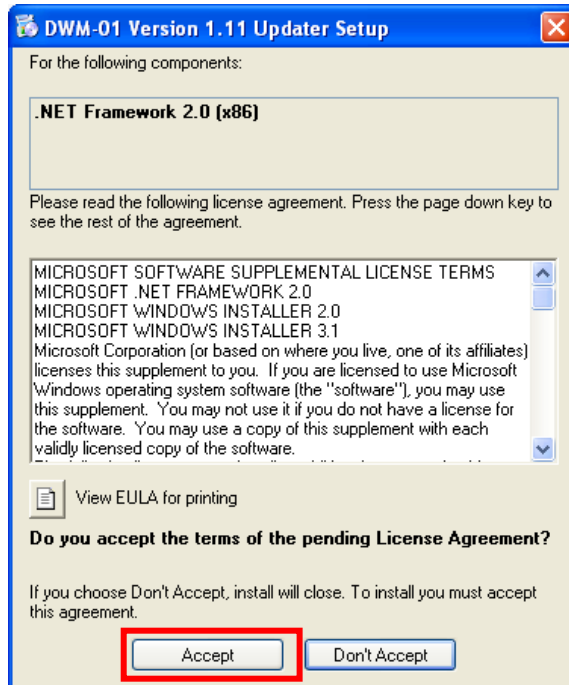
DWM-01 Updater Operating Instructions

1.3. After double-clicking, perform installation using the following procedure.

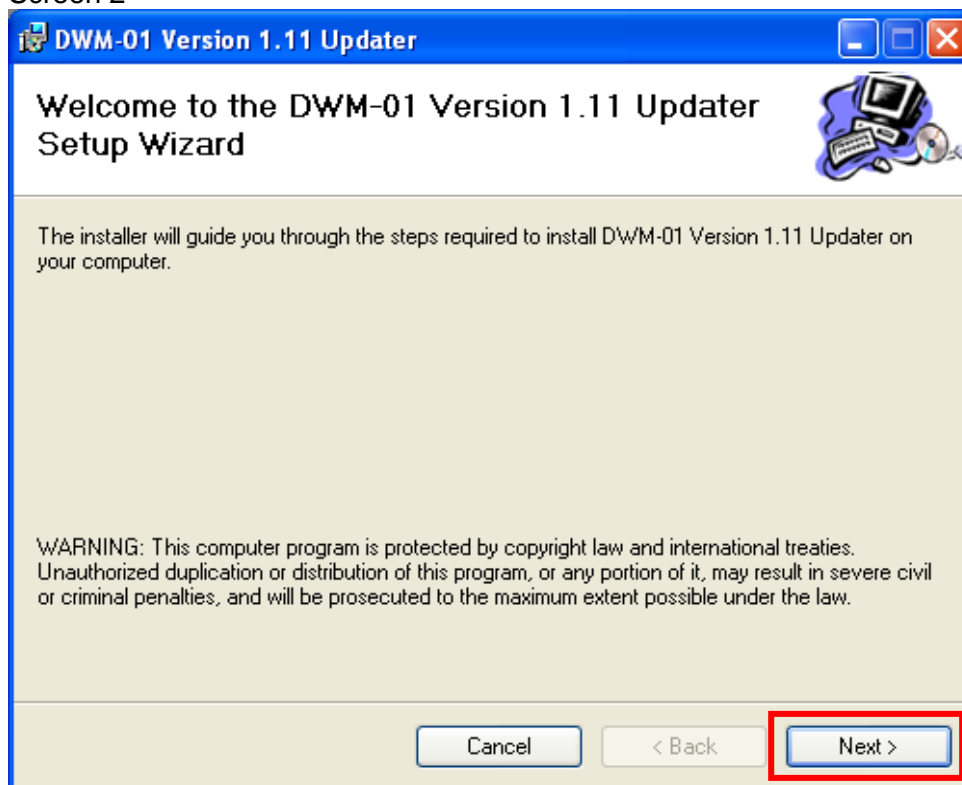
1.3.1. If screen 1 appears, click [Accept] and perform the installation procedure in “2. .net Frameworks version 2.0.”

1.3.2. If screen 2 appears, click [Next>] and perform the installation procedure in “3. DWM-01 Version 1.23 Updater.”

Screen 1



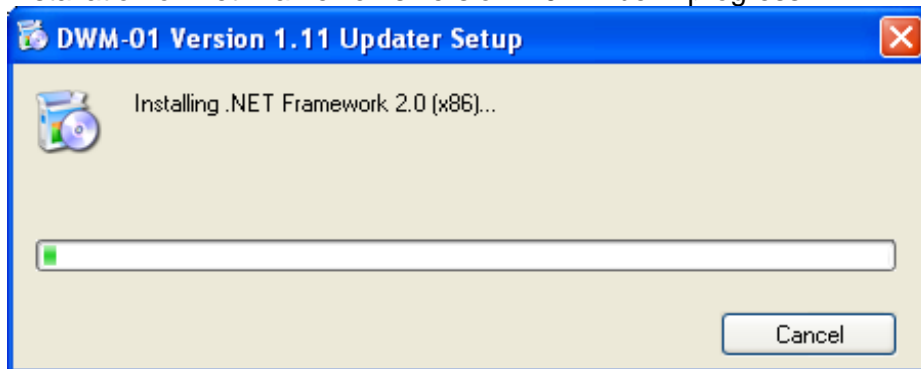
Screen 2



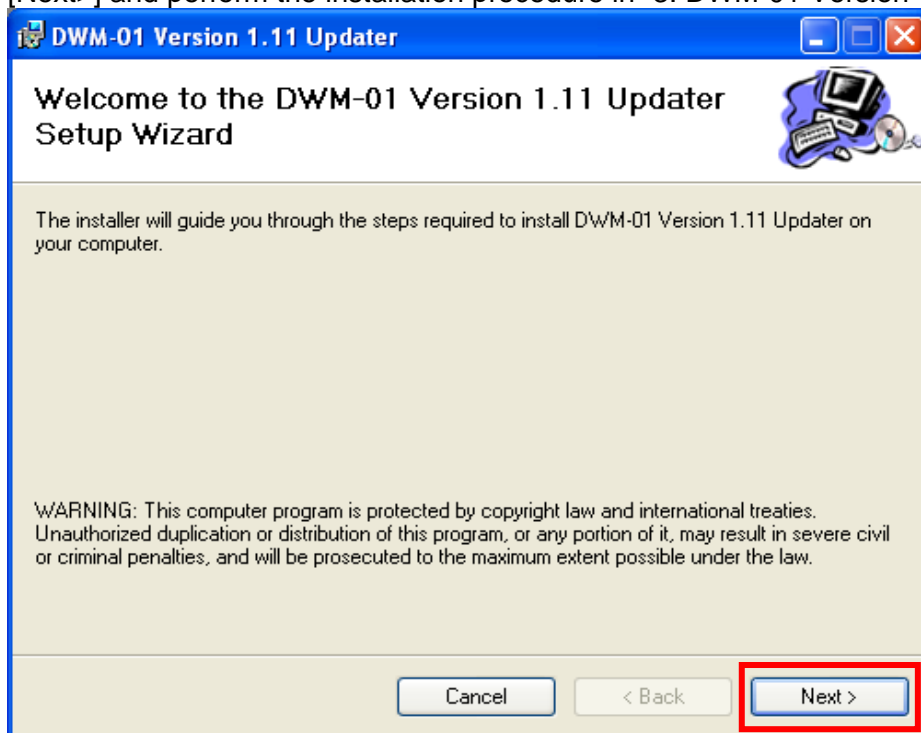
DWM-01 Updater Operating Instructions

2. .net Frameworks version 2.0

2.1. Installation of .net Frameworks version 2.0 will be in progress.



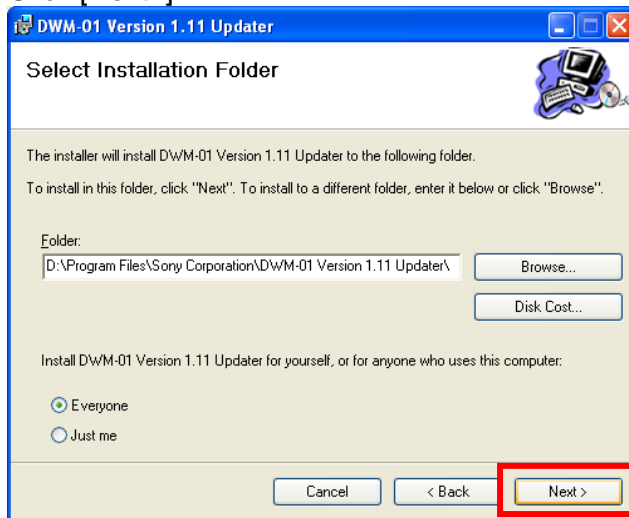
2.2. When installation of .net Frameworks version 2.0 is complete, the following screen appears. Click [Next>] and perform the installation procedure in “3. DWM-01 Version 1.23 Updater.”



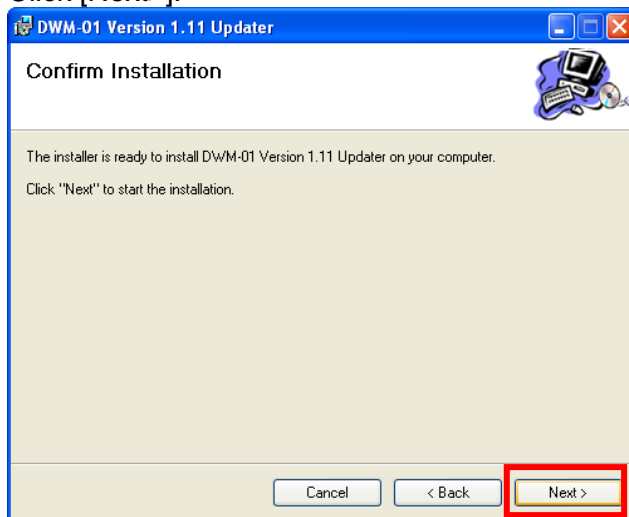
DWM-01 Updater Operating Instructions

3. DWM-01 Version 1.23 Updater

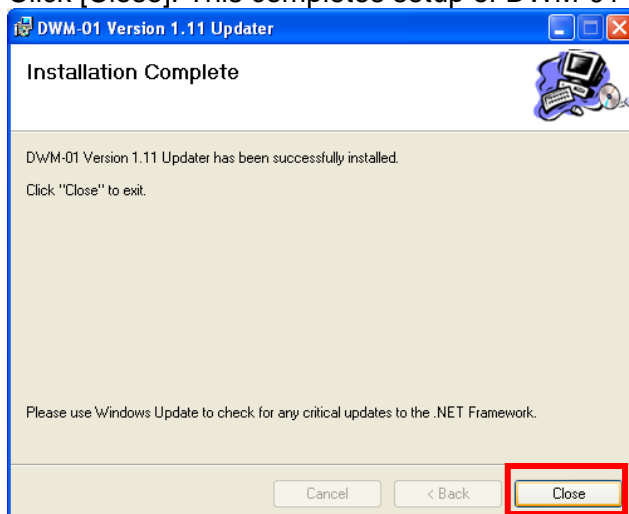
3.1. Click [Next>].



3.2. Click [Next>].



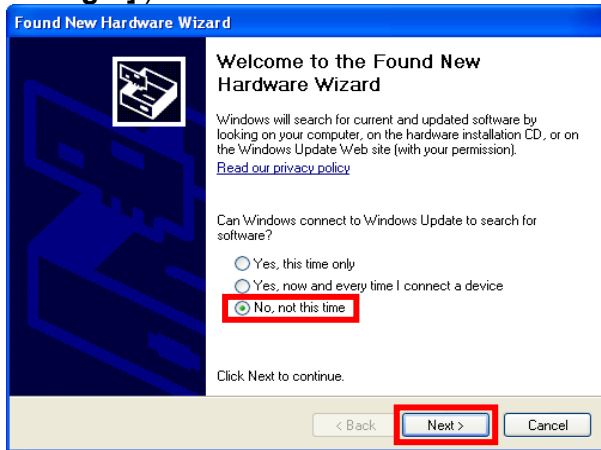
3.3. Click [Close]. This completes setup of DWM-01 Version 1.23 Updater.



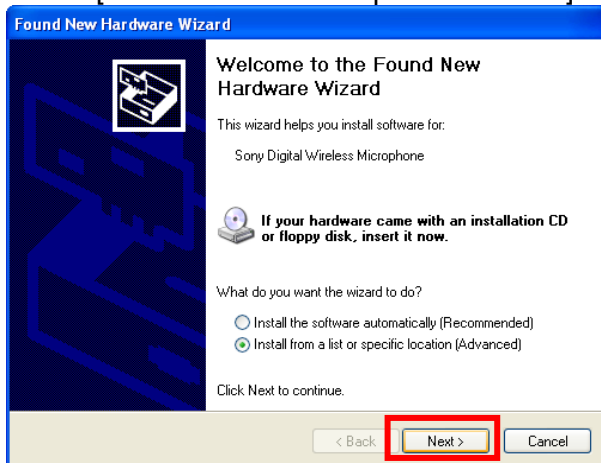
[Installation Procedure for the USB Driver]

The installation procedure for the USB driver that is required for USB communication between the computer and the DWM-01 follows.

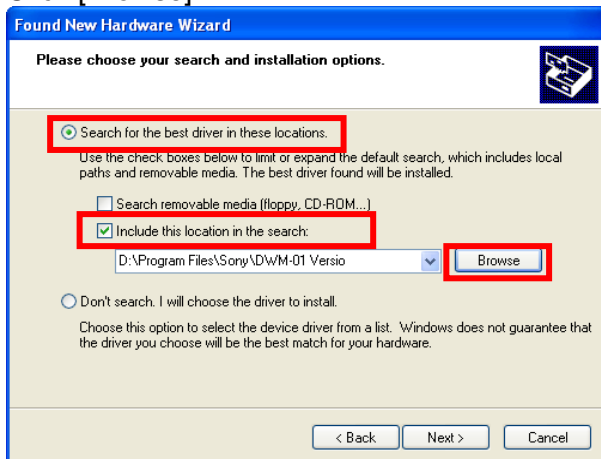
1. Connect the computer to the DWM-01 using a USB cable.
When the following screen appears after the DWM-01 turns on, select [No, not this time] and click [Next>]. (If this screen does not appear, see **[Installing the USB Driver from the Device Manager].**)



2. Select [Install from a list or specific location] and click [Next>].

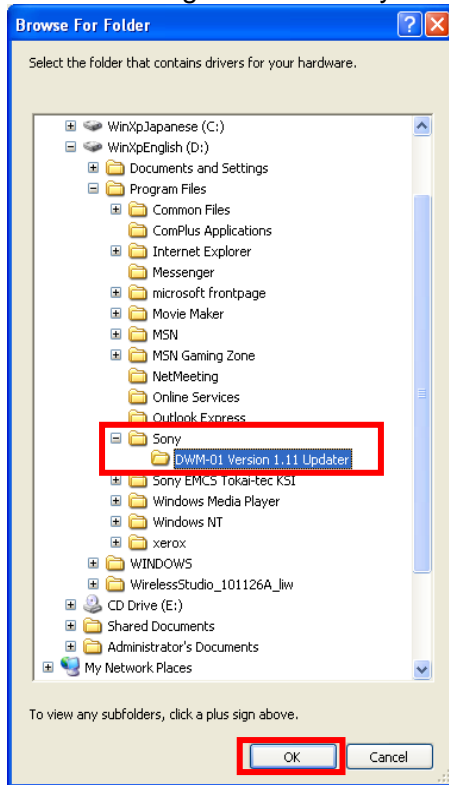


3. Select [Search for the best driver in these locations].
Clear the [Search removable media] check box, and select [Include this location in the search].
Click [Browse].

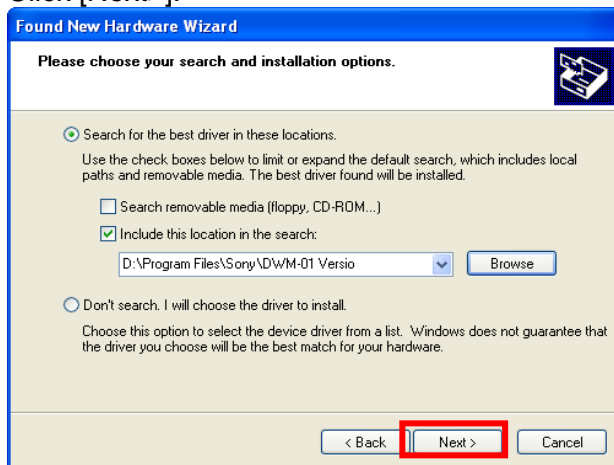


DWM-01 Updater Operating Instructions

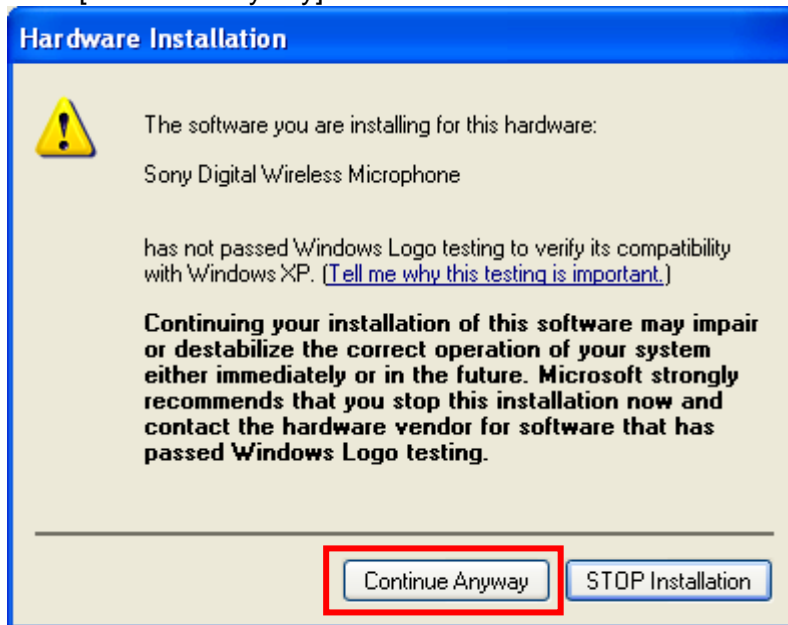
4. Select "C:\Program Files\Sony\DWM-01 Version 1.23 Updater," and click [OK].



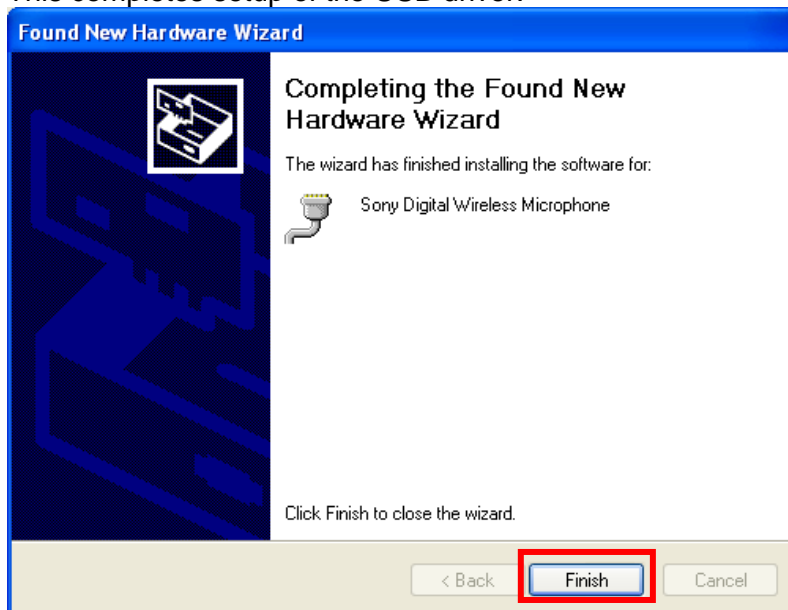
5. Click [Next>].



6. Click [Continue Anyway].



7. Click [Finish].
This completes setup of the USB driver.

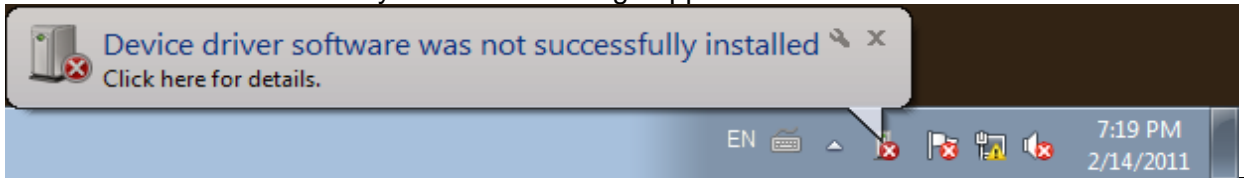


[Installing the USB Driver from the Device Manager]

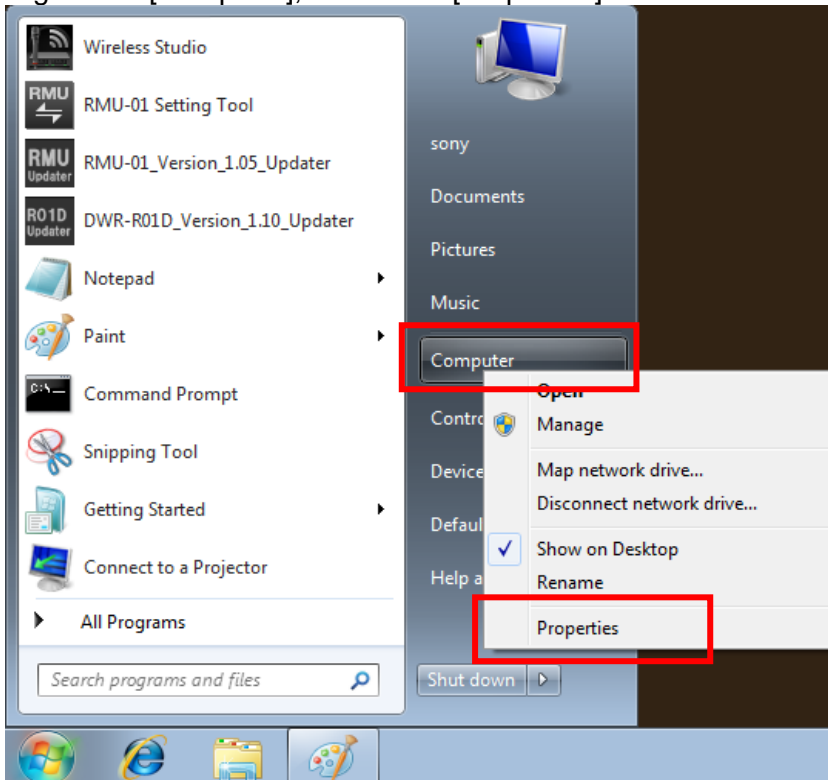
The procedure for installing the USB driver from the Device Manager follows.

This procedure is generally intended for installation of the USB driver in Windows 7. If the USB driver was properly installed in **[Installation Procedure for the USB Driver]**, proceed to **[Update Procedure]**.

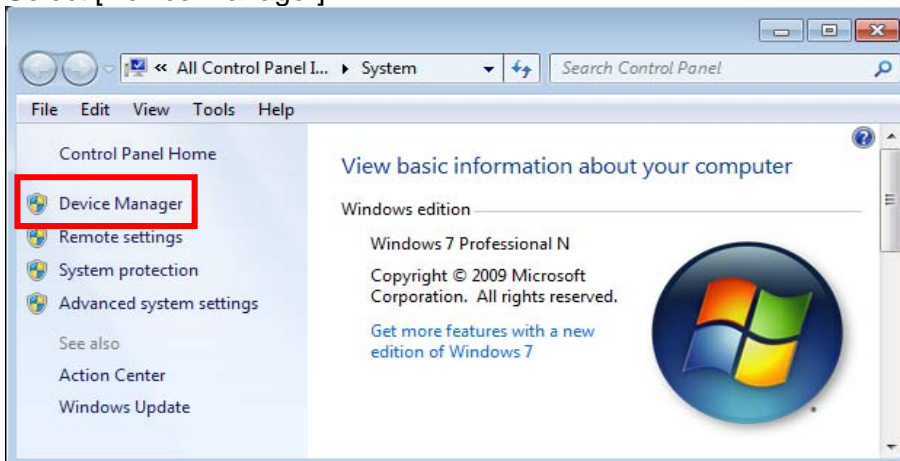
1. The wizard for USB driver installation does not appear in Windows 7. Instead, the “Device driver software was not successfully installed” message appears as follows.



2. Right-click [Computer], and select [Properties].

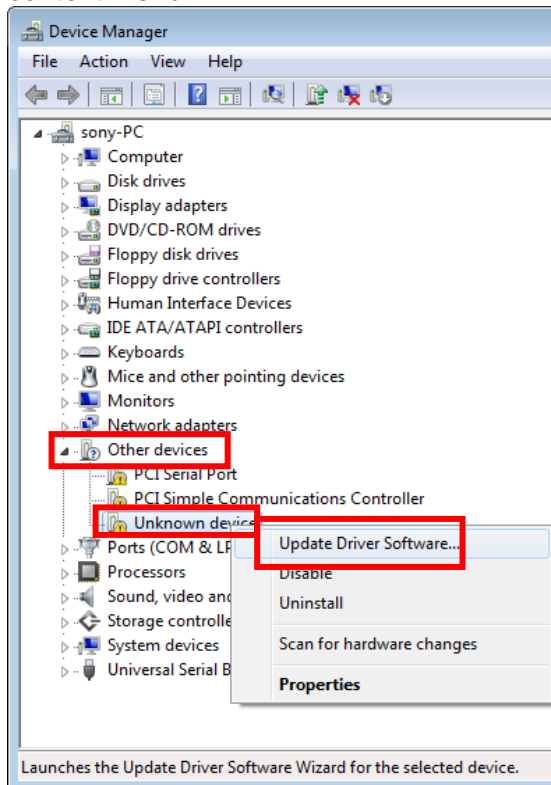


3. Select [Device Manager].

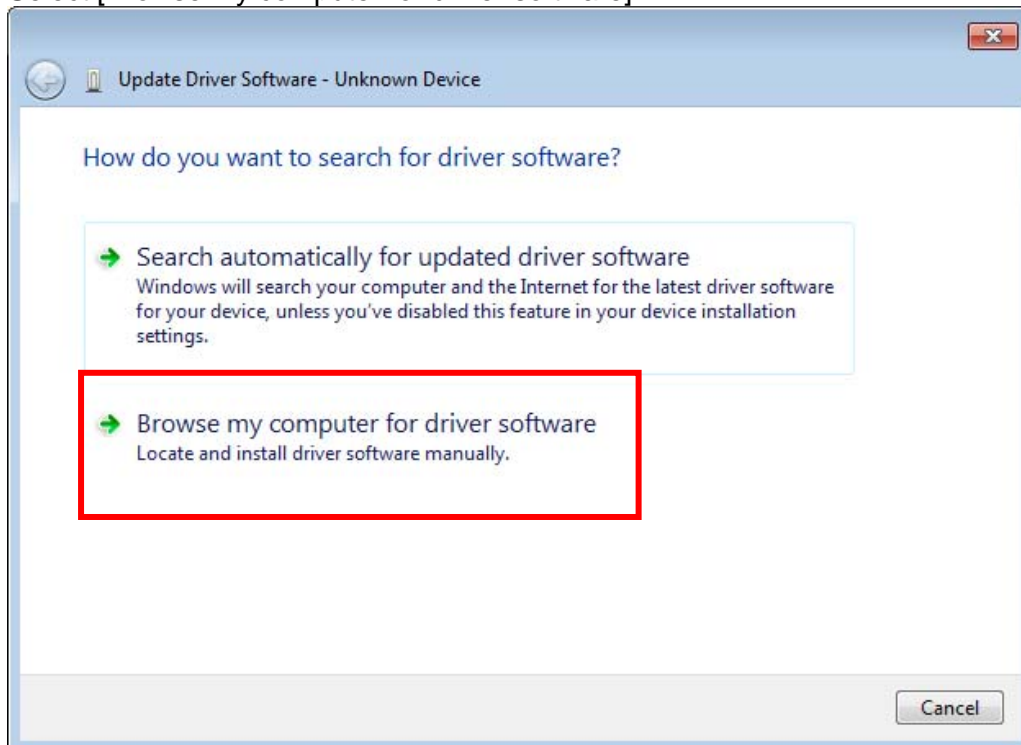


DWM-01 Updater Operating Instructions

4. Right-click [Unknown device] under [Other devices], and select [Update Driver Software] from the context menu.

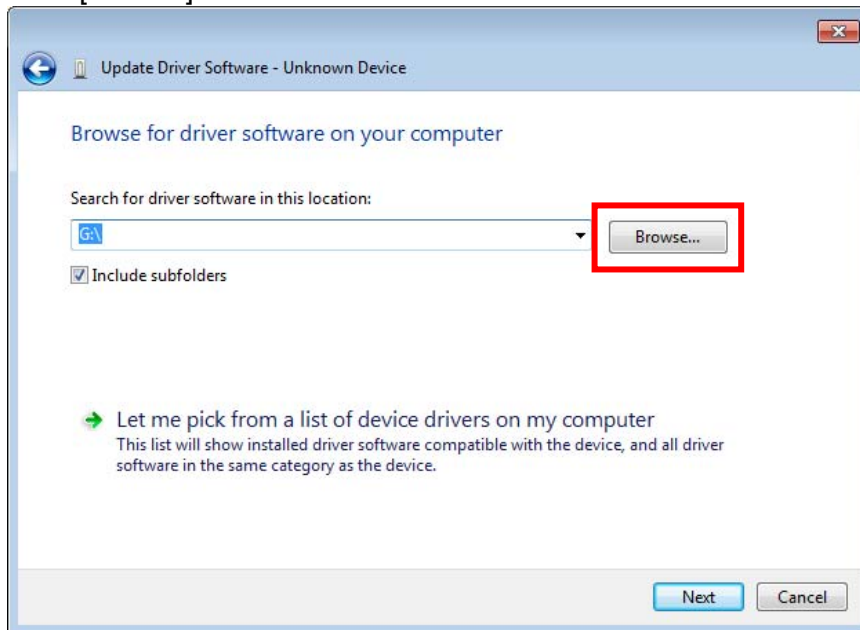


5. Select [Browse my computer for driver software].

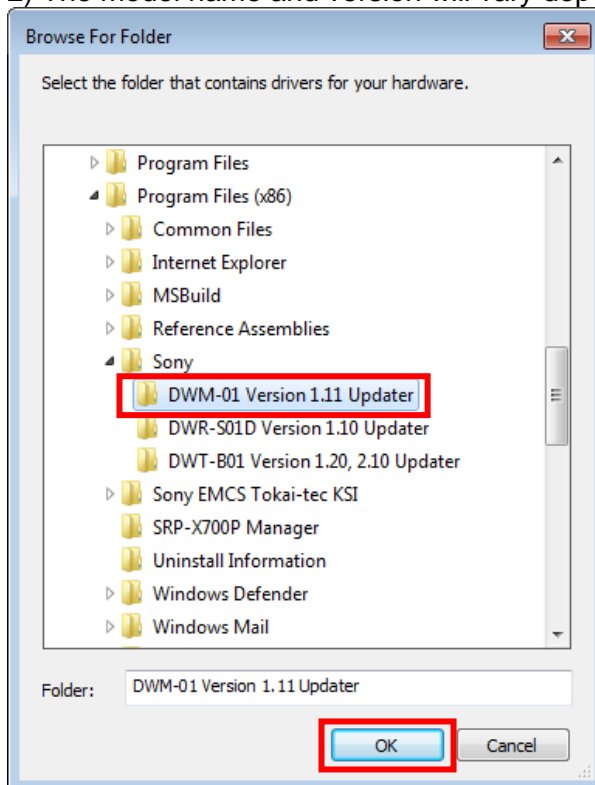


DWM-01 Updater Operating Instructions

6. Click [Browse].

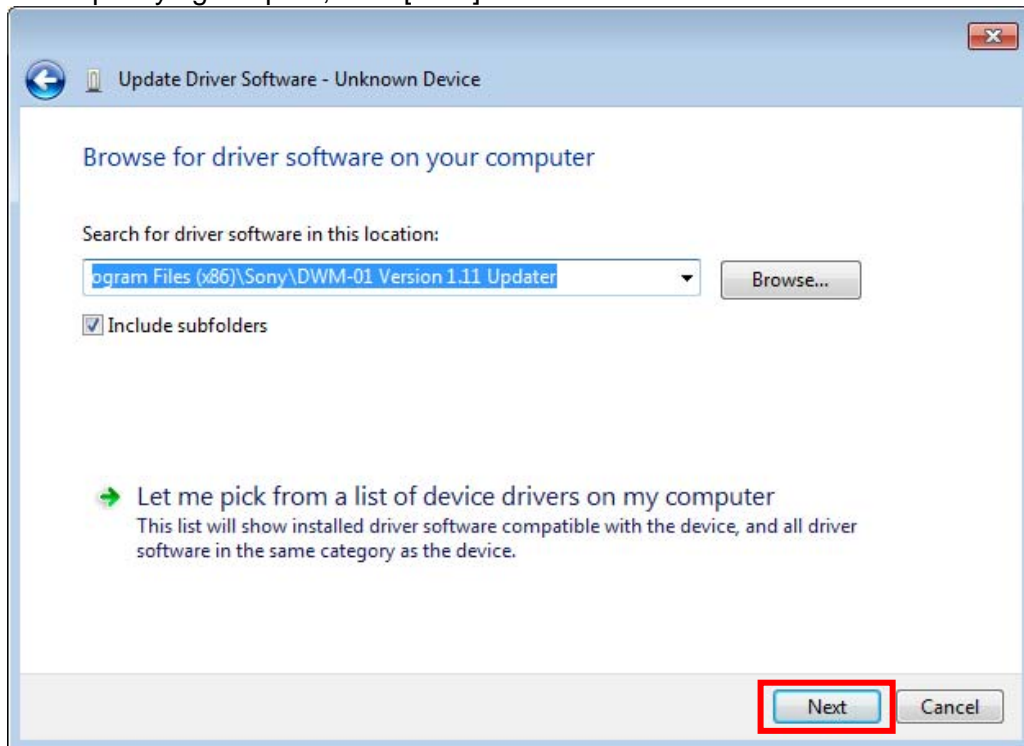


7. Select "Computer\C:\Program Files¹⁾\Sony\DWM-01 Version 1.23 Updater²⁾," and click [OK].
- 1) In 64-bit operating systems, select "Program Files (x86)."
- 2) The model name and version will vary depending on the updater.

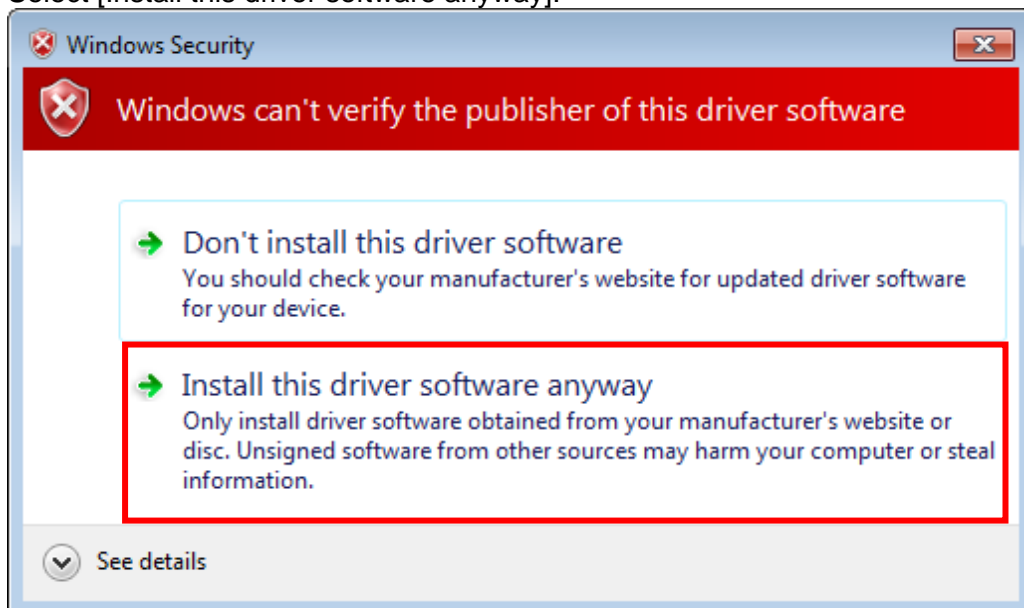


DWM-01 Updater Operating Instructions

- After specifying the path, click [Next].

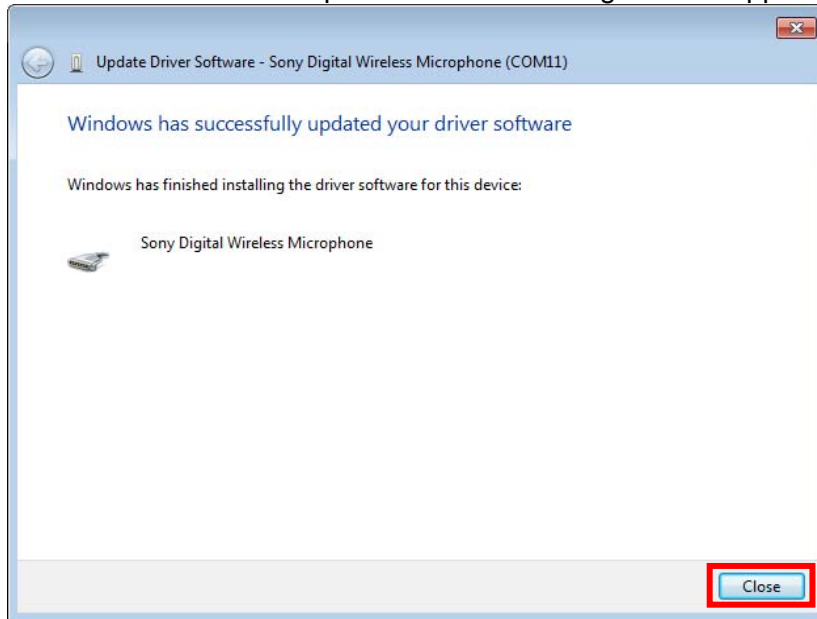


- Select [Install this driver software anyway].

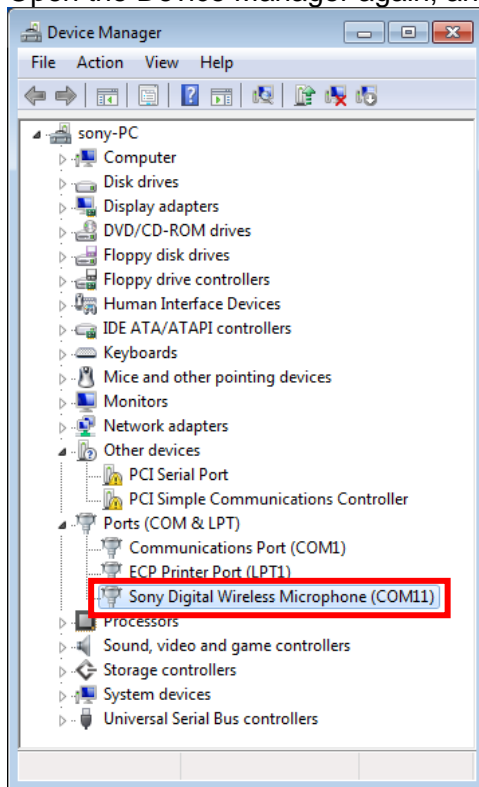


DWM-01 Updater Operating Instructions

10. When installation is complete and the following window appears, click [Close].



11. Open the Device Manager again, and verify that the USB driver is installed.



[Update Procedure]

The procedure for updating the firmware on the DWM-01 to version 1.23 using DWM-01 Version 1.23 Updater follows.

The screens used are from DWM-01 Version 1.11 Updater.

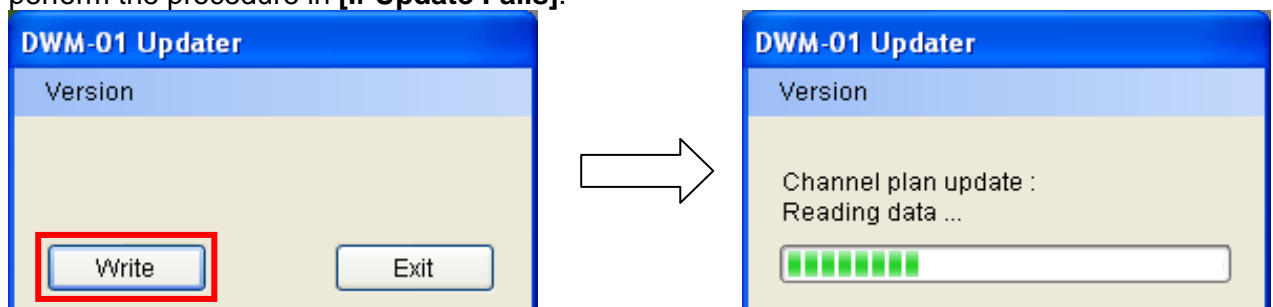
- 1 Start DWM-01 Version 1.23 Updater.

Click [start] > [All Programs] > [Sony DWL Flash Write Tool] > [DWM-01 Version 1.23 Updater].



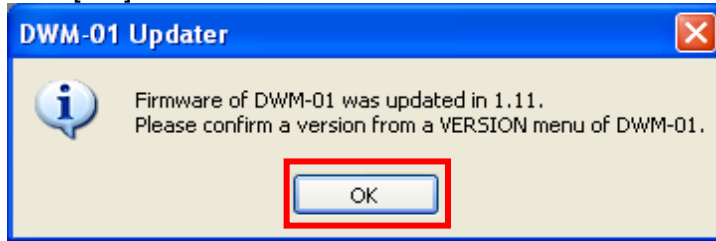
- 2 Click [Write] to start the update.

[Note] If you turn off the DWM-01 or disconnect the USB cable connecting the DWM-01 to the computer while update is in progress, the update will fail. To prevent loss of battery power during update, check the remaining battery power before performing update. In the event that update fails, perform the procedure in **[If Update Fails]**.

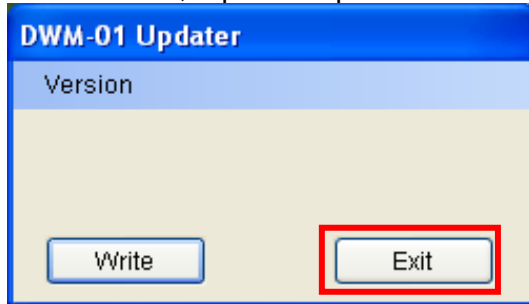


DWM-01 Updater Operating Instructions

- When the update is complete and a message indicating that the update was successful appears, click [OK].



- Click [Exit] to quit DWM-01 Version 1.23 Updater. If you want to continue to update another DWM-01 unit, repeat the procedure from step 2.



[Verifying Update]

The procedure for verifying the firmware version of the DWM-01 follows.

- Turn on the DWM-01.
- Press the minus button to display the VERSION menu.
- Verify that 1.23 appears for the VERSION item.
(If you used a different version of DWM-01 Updater, verify that that version appears.)

[If Downgrade]

- Downgrade from Ver. 1.20 and more to Ver. 1.11 and less**

When you downgrade the software on DWM-01 from Ver. 1.20 and more to Ver. 1.11 and less, be sure to go back up in a factory shipment state. When you do not this procedure, indication of GP/CH may be confused. A procedure that goes back up in a factory shipment state is as follows.

- Turn on the DWM-01 while pushing SET button.
- Press the minus button to display the FACTORY PRESET menu.
- Continue pushing the SET button more than two seconds.
- Select "YES" if displayed with "Are you sure?" .

- Procedure for restoring**

When indication of GP/CH is confused by not going back up in a factory shipment state, please perform the following procedure for restoring.

- Prepare DWM-01 Version 1.20 (and more) Updater
- Using updater prepared in 1., update DWM-01.
- Go back up in a factory shipment state, if update is completed.
- Prepare DWM-01 Version 1.11 (and less) Updater.
- Using updater prepared in 4., update DWM-01.

- **If you downgrade DWM-01 applied a custom setting to Ver. 1.22 and less**

if you downgrade DWM-01 applied a custom setting to Ver. 1.22 and less, you must erase the custom setting. When you do not this procedure, indication of GP/CH may be confused. A procedure that erases the custom setting is as follows.

1. Connect the computer to the DWM-01 using a USB cable.
2. Start DWX Custom Setting Tool, and click [Search] button.
3. If DWX Custom Setting Tool detects the DWM-01 that is connected the computer, click [Erase] button.

- **Procedure for restoring**

When you downgrade DWM-01 without erasing a custom setting, indication of GP/CH is confused. Please perform the following procedure for restoring.

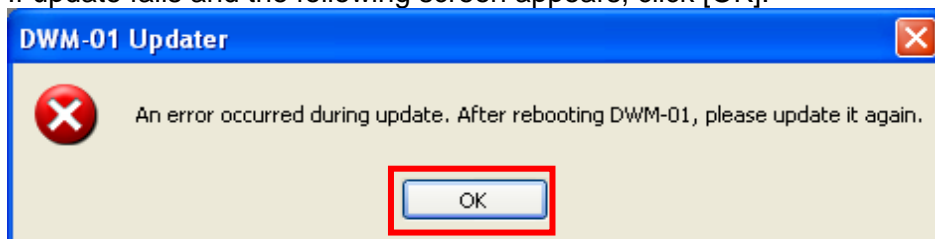
1. Prepare DWM-01 Version 1.23 (and more) Updater.
2. Using updater prepared in 1., update DWM-01
3. Start DWX Custom Setting Tool, and click [Search] button, if update is completed.
4. If DWX Custom Setting Tool detects the DWM-01 that is connected the computer, click [Erase] button.
5. Prepare DWM-01 Version 1.22 (and less) Updater.
6. Using updater prepared in 5., update DWM-01.

[If Update Fails]

The procedure for restoring an update failure follows.

The screens used are from DWM-01 Version 1.11 Updater.

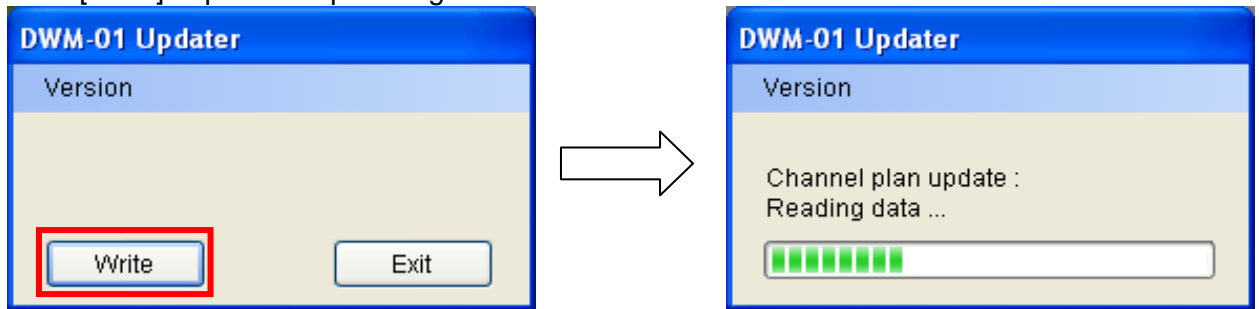
1. If update fails and the following screen appears, click [OK].



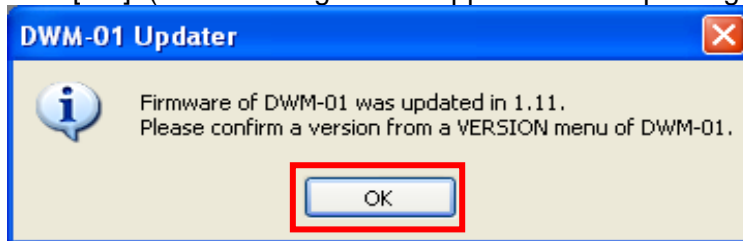
2. Turn off the DWM-01, then turn it on again.
(When you restart the DWM-01 after an update fails, the DWM-01 unit's screen will be blank, but this is not a malfunction.)

DWM-01 Updater Operating Instructions

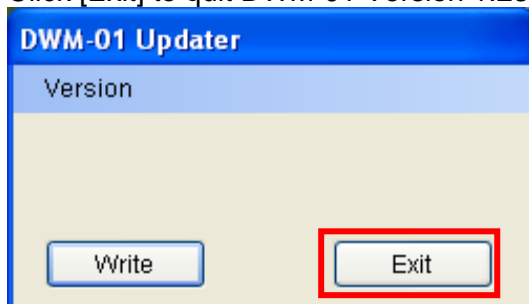
- Click [Write] to perform update again.



- When the update is complete and a message indicating that the update was successful appears, click [OK]. (The following screen appears when updating to version 1.23)



- Click [Exit] to quit DWM-01 Version 1.23 Updater.

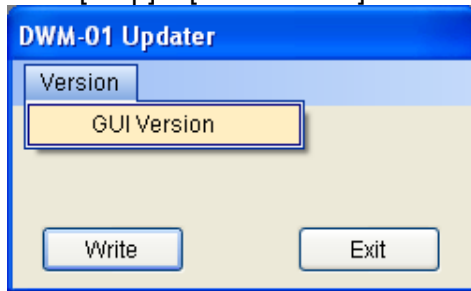


[Miscellaneous]

The procedure for verifying the version of DWM-01 Updater follows.

The screens used are from DWM-01 Version 1.11 Updater.

1. Click [Help] > [GUI Version].



2. The version of this software appears.

